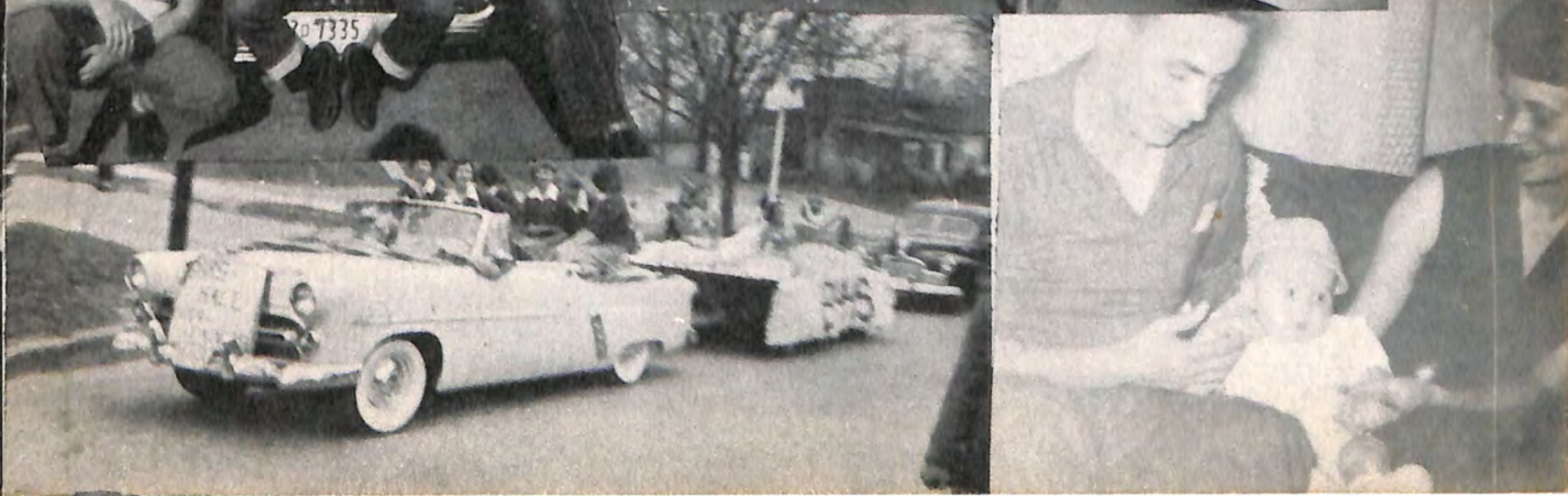


Wildcat '53





Jimmy Craig
Freshman BHHS
1953





The WILDCAT 53 PRESENTS



THE OLD SOUTH

BYARS-HALL HIGH

COVINGTON, TENNESSEE

STAFF



Bringle



Wooten



Harvey



Hall



Cumie



Beaver



Fortner



Stafford



Calhoun



Fleming



Martin



Ferguson



Yates



Gracey



Miller



Slover



Smith



Naifeh



Gracey

Bringle



Davis



Billings



Fisher



Hall



Turner



Hopkins



Lucas

Dedication



MR. C. E. JOHNSON

For twenty-eight years Mr. C. E. Johnson has been sending farmers out into our county. We feel that no small credit is due him for the definite progress that has been made in agricultural pursuits in this area for the past quarter century. Therefore, it is with this recognition in mind that we, the Annual Staff, dedicate to Mr. Johnson this 1953 WILDCAT, whose theme revolves around Tipton County's leading agricultural product, cotton.

Vupil

Attendance	1	2	3	
Da	30	29	28	
D				
Hill	A	A	A	
F	1	2	3	Ex
E				
A				
Geo				
Englis	A	A	A	A
L				15
H				
Math				98
Ag				



MR. R. K. CASTELLAW
Superintendent

MR. J. E. SIMONTON
Principal



Mr. Lewis Hunt
Agriculture
Science

MR. LEWIS HUNT
Agriculture
Science

MISS FRANCES RAST
Home Economics

MRS. LEWIS HUNT
Commercial

MR. C. E. JOHNSON
Agriculture



Attendance



MISS DORIS BOYD
History

MRS. HUGHES BRINGLE
English

MR. E. M. EVANS
Mathematics

MR. RODNEY HUGHES
Mathematics

Math
Ar



Type
Shorthand

MRS. GEORGE MAY
English

MRS. W. W. PARKINSON
Latin

MRS. CHALMERS PARR
English

MRS. STANLEY SHOAF
Librarian



Attendance
 Days Present
 Days Absent
 Days Tardy
 Deportive
 Period
 Arithmetic
 Algebra
 Geometry
 English
 Latin
 History
 Math. IV
 Agriculture

	1	2	3
Attendance	0	29	28
Days Present			
Days Absent			
Days Tardy			
Deportive		A	A
Period		2	
Arithmetic		A	A
Algebra		A	A
Geometry			
English			
Latin	A	A	A
History	A		
Math. IV			
Agriculture			



MR. JAMES CULLIVAN
 Physical Education
 Football

MR. RAYMOND JUDY
 Distributive Education
 Basketball



Typing
 Short-hand

MR. R. E. SCOTT
 Shop

MISS CHARLOTTE ROSS
 Physical Education
 Sociology

MR. HUGH MATHEWS
 Band
 Drivers Training



Civics
 Social
 Business
 Dictation
 Health
 Geography

SENTINELS



FRANK FORTNER	<i>Vice President</i>
CARL PANNELL	<i>President</i>
EMILY HARVEY	<i>Treasurer</i>
MARGARET JOBE	<i>Secretary</i>
JEANETTE MILLER	<i>Reporter</i>



KENNETH AKINS

Kenneth Akins has nicknames galore, Tiger, Digger, maybe more. To study engineering is his plan. He wants to fill the electrical demands.

Clubs: Latin Club 2, Math Club 3.



MARY BARRON

If toward your friends you would bear no malice, then follow the pattern of Mary Alice. Sweet and gentle, ambitious for college, as a schoolteacher she should distribute much knowledge.

Clubs: FHA 1, Commercial 4, Geography 4, Sec. 4; Basketball 2-3-4



SYLVIA AMES

Sweet seventeen and pretty as well, if you don't believe me just ask Frizzell. Royalty has followed her throughout the years, but to be queen of the kitchen is to her more dear.

Clubs: FHA, Library 2-3-4, Commercial, Glee 1-2-3, Band, Librarian 2, Sec.-Treas. 4; Candidate for Band Queen 3, Class Rep. Strawberry Festival 2, Class Rep. for Homecoming 4, Football Queen 4, FFA Queen 1, Purple and Gold Staff 4.



JULIUS BEASLEY

Jalker does marvelous things with a hammer. While in shop he raises quite a clamor, but we're sure some day he'll be a success, because he always does his best.

Clubs: FFA 1-2-3-4, Football 1.



PATRICIA BIRMINGHAM

Right now Pat's pet field is Home Ec. And photographs she likes to collect. From college she is hoping to float, into a career that includes a fur coat.

Clubs: FHA 1-2-3-4, Teen Timers, Band, Vice Pres. 2.



BEAUTON BOWDEN

Beauton would make a grand secretary, she could also be a wonderful wife. This shows her talents vary, which adds up to a happy life.

Clubs: FHA 1, Library 3-4, Glee 2-3, Commercial.



JOANNE BLACK

Joanne is very small in size, but in making friends she takes first prize. She'd like, someday, to teach phys-ed. We're sure, if she does, she'll come out ahead.

Clubs: FHA 1-2-3, Commercial 4, DE 4, Teen Timers 1-2, Basketball 2-3.



INEZ BILLINGS

We'll remember "Nez" by her blonde curls, which are the envy of all the girls. She looks well in a formal, or digging the ground. That's the reason she was chosen the Best All Around.

Clubs: FHA 1-4, Candidate Homecoming Queen 2, Basketball 2-3-4, May Day Court 3, Teen Timers 2, Senior Play 4, Annual Staff 4.



ANNE BOYD

To go with her husband to the Pacific would be an adventure most terrific. Her life as a wife will be much fun. She's certainly hooked the perfect one.

Clubs: FHA 1-2-3, Glee 2-3, DE 4, Latin 2, Band 2-3, majorette 3, Miss Tipton County 2, Rep. to Strawberry Festival 1-3.



WAYNE BRINGLE

Playing with electronics is strictly enjoyed. We know that someday Wayne will be employed. (When we hear a motorcycle jingle, we know it is Wayne Bringle.)

Clubs: Band 2-3.



JIMMY BURGESS

An excellent speaker, excels at football, too. A knowledge seeker, and a friend to you.

Clubs: FFA 1-2-3-4, Math 4, C Club 4, Glee Club 3, Teen Timers 3, Basketball 1, Football 2-3-4, Best Blocker 4, Senior play 4.



BILL BURNETT

To fly a plane is Mickey's ambition after he finishes college. He's got the body, the remaining condition . . . Can he acquire sufficient knowledge?

Clubs: FFA 1-2-3-4, Dairy Team Judge 2-3-4, Band 2-3-4, Glee Club 2-3, Teen Timers 3.



NANCY CALHOUN

Nancy's a loyal companion, and an excellent friend, an earnest worker who is true to the end. For things artistic she has a definite yen.

Clubs: Latin 2-3-4, FHA 1-2-3-4, Treasurer 1, Commercial 4, Beta 3, Teen Timers, Math 3, Glee Club 1, President of Sophomore Class, Annual Staff 3-4, Purple and Gold 3-4.



ANN BURLISON

Ann's a member of the Beta Club, which proves she's really smart. She's never been known to flub-the-dub, she'll always do her part.

Clubs: FHA 1, Latin 3, Beta 3-4, Vice President, Purple and Gold Staff 3-4, Commercial 4.



JIMMY BURLISON

Jimmy is always full of fun, whether telling jokes or carrying a gun. And you can bet your last buck or two, he'll always be a friend to you.

Clubs: FFA 1, DE 4, Band, Baseball.



MELISSA CARSON

To fly way up into the blue, and travel all around. This as a stewardess Melissa can do, but her talents may be best on the ground.

Clubs: Latin 1-2, FHA 1-2-3-4, Commercial 4, Math 3, Beta 3-4, reporter 4, Purple and Gold Staff 3-4, Assistant Editor 4.



JIMMY J. CHAPMAN

Big and brawny, but gentle as a lamb, he's dynamite at football, not so hot on exam. No one so popular and quick with the girls, he's always living in two different worlds.

Clubs: FFA 2, C Club 1-2-3, Teen Timers 1-2-3-4, Sophomore Class Reporter, May Day Escort, Football 1-2-3-4, Co-Captain 4.



CORRINNE CURRIE

Whenever you see Corrinne Currie you can bet she'll be talking and in a hurry. Expert at being a beauty queen, A prettier girl you've never seen.

Clubs: FHA 1-2-3-4, reporter 2, State President of FHA 3, Latin 2, Library Club 3, Sub District President of FHA 2, Teen Timers 1-2-3-4, Annual Staff 3-4.



CALVIN CREASY

Guess what Cal would like to be? Yes, you're right, a fine M. D. And being Cal he'll be one too, and when you're sick he'll come to you.

Clubs: Glee 1, Latin 2, Math 3, Beta 3, Purple and Gold Staff 2-3-4.



REECE CORDER

Musical minded in voice and in horn, he'll preach from the pulpit every Sunday morn. A very talented young man is he, friendly and courteous and smart as he can be.

Clubs: Beta 3, FFA 1, Glee 2-3, Band 2-3-4, President 4, Math 3, Senior play.



ABNER DAVIS

Strong and handsome are his chief traits. This can be proved by all of his "dates." He's equally at home on a football field. When he enters the line the opposers must yield.

Clubs: C Club 3-4, Latin 2, Band 3-4, Annual Staff 4, Vice President of Junior Class, Football 2-3-4.



DOROTHY DEVERELL

Dorothy's interest centers around a man. To be a housewife is her plan. Of dolls she has quite a large collection, and brown and white is her color selection.

Clubs: DE 4, Glee Club 2, Commercial 4, FHA 1-2-3.



FRANK FORTNER

Athletic, witty, and full of fun, Frank's made a friend of everyone. For a pretty girl he'd walk a mile, but it's seldom necessary with his smile.

Clubs: C Club 2-3-4, Math 3, Latin 2, DE 4, Vice President 4, Winner of Public Speaking Contest at West Tenn., DE Convention, Annual Staff, Vice President of Senior Class, Football 1-2-3-4, Captain Junior Varsity, Basketball 1-2-3-4, Senior Play.



PHIL DUANE

Cap La-Dainty is quite fantastic. Some things he's done are mighty drastic. In spite of what you may believe, the time has come, he's going to leave.

Clubs: Latin 2-3, Glee 3, Math 3, Teen Timers 1-3-4.



DONALD ERWIN

Donald is quite reserved and shy, although I really don't see why. His hobby is pitching a game of ball. After he is gone, he'll be missed by all.

Club: FFA 1-2-3-4.



LYNN EUBANKS

Daigo was wed on Christmas day. She couldn't bear to wait till May. On her honeymoon, of all the places, she wanted to go to the "wide-open spaces."

Clubs: DE, Secretary, Teen Timers 1-2, Cheerleader 4, Basketball 1-2-3.



JAMES FAULK

James would like to travel and sell. We all know he'll do it well. But if he tries to do it in a stripped down Ford, we doubt if he'll be able to pay his board.

Clubs: FFA 1-2-3, DE 4.



GEORGE GRACEY

Bubba is his nickname and athletics is his forte, Shorty is his dog and good is his report.

Clubs: C Club 2-3-4, President C Club, President Latin Club, Beta 3, Math 3, Football 1-2-3-4, Basketball 1-2-3, President of Freshman class, Vice President of Sophomore class, Purple and Gold Staff 2-3-4, Annual Staff.



YOLANDE FAULK

As a secretary Yolande will rank with the best. She will fill her job with ardor and zest. But if she decides a wife to be, whoever she chooses, how lucky is he.

Clubs: Commercial 4, FHA 1-4, Class historian 4.



DAVID FERGUSON

At mechanical drawing he's unusually good, as careful as a workman can be. He'd like to have a ranch near the deep, deep woods, in the hills of Tennessee.

Clubs: Latin 2, Math 3, Football 1, Baseball 1, American Legion Ball 1, Purple and Gold 3-4, Annual Staff 3-4.



GILES FORBESS

We call him Buddy, but the teachers call him "Giles." He's everybody's buddy, greets us all with "Hi's" and smiles.

Clubs: Band 2, Commercial 4, Teen Timers, Football 1, Manager 2-4, Latin Queen 1, Friendliest Boy 4.



CHARLES FULLER

"Freak Jr." is right on the ball, in the basement or the study hall. His stories aren't quite humane, but his ambition is to fly a plane.

Clubs: Glee 1-2-3, Teen Timers 1-2-3, Purple and Gold Staff 2, Assistant Sports Editor 2.



BOB HAMMONS

A good sport in school and any game, to be a coach is Bobby's aim. If his players prove as good as he, he's sure to win a big trophy.

Clubs: DE 3, Treasurer 3, Math Club 3, C CLUB 1-2-3-4, Basketball 1-2-3-4, Baseball 1-2-3-4, Football 1-2-3-4, American Legion Baseball 1-2, Class Secretary-Treasurer 1, Class Secretary 2.



SANFORD GILBREATH

At speaking Sanford is very good. In his lessons he is the same. Put pep in a party he always could, that goes with the Gilbreath name.

Clubs: FFA 1-2-3-4, Public Speaking Winner 2 years, Basketball 1, 2.



MARYE JEANNE GLENN

It seems Mary Jeane was born to twirl. She swept in from Ark. and stayed in a whirl. She set her wedding for late November, which is a date she'll always remember.

Transferred from Camden, Ark. Clubs: Latin 2, Glee 3, FHA 3, Band 1-2-3-4, Majorette 2-3-4.



JERYL GRAY

At ping-pong he is quite a star. He reads more books than others by far. What will he do in years to come? May be a millionaire—may be a bum.

Clubs: FFA 1-2-3-4, Teen Timers 3, Baseball 3.



JIMMY GRIGGS

Another "cut-up" have we here, very mischievous, but nothing to fear. We know we can always count on Jim, that is if he doesn't lose his vim.

Clubs: FHA 1-2, DE 4, Junior Varsity 1.



EMILY HARVEY

Em's our gal with personality and looks. The boys get ideas when they taste what she cooks. What her future holds even she cannot guess, but she'll have no failure—only success.

Clubs: Library 2-3-4, Glee 3, Commercial 4, Latin 2, FHA 1, Teen Timers 1-2-3-4, May Court Representative 2, Purple and Gold 2-3, Class Treasurer 4, Assistant Editor of Annual 4.



MAURICE GWINN

Maurice would like to till the earth. He'll get from it all it's worth. A busy life he'll live always, gay and cheerful all his days.

FFA 1-2-3-4.



JO HALL

Vivacious ways but inclined to blush, she likes to talk but knows when to hush. Has scatterbrain ways—but not too much.

Clubs: Math 3, FHA 1-2-3-4, President 1, Latin 2, Teen Timers 1-2-3-4, Candidate for Homecoming Queen, May Court, Cheerleader 3-4, Annual Staff 4, Purple and Gold.



ANN HARVEY

To be a teacher of phys. ed. is Ann's ambition, or so she said. To be married to a handsome man would be a better plan for Ann.

Clubs: Band 2-3, FHA 1-2, Glee 1-2-3, DE 4, Teen Timers 1-2-3.



JIMMY HOPKINS

After Jimmy finishes here, he plans to be an engineer. To Paris he would like to go, for fun or money we'd like to know.

Clubs: Latin 2, Glee 2, Teen Timers 1-2-3, Math 3, Football 1, Band 3-4



LESLIE A. HARVEY

Leslie Ann is quite efficient. To edit our paper is proof sufficient. To be a decorator is her desire. In this, much fame she will acquire.

Clubs: FHA 1-2, Convention Delegate, Latin 2-3-4, Reporter 2, Beta 3, Glee 1-2, Band 2, Math 3, Senior Play, Purple and Gold 3-4, Editor 4, Best Citizen, Basketball 1.



JOE HILL

If some day you steal a quarter, in getting help you must not loiter. The best lawyer in town will be J. O. He'll straighten you out if you give him some dough.

Clubs: Latin 2, Glee 3, Commercial 3, Math 3, Band 2-3, Teen Timers 1-2-3.



LOUIS JETER

"Yetz" may not move as quick as a whip. In geometry he's not an Einstein. But if there is a place he'd like to slip he will never get left behind.

Clubs: Latin 2, Glee 3, Math 3, Football 1-2, Basketball 2, Teen Timers 1-2-4, Independent Baseball 1.



MARGARET JOBE

Quiet, reserved, and demure, of Maggie's loyalty her friends are sure. Enchiladas are her favorite dish. To go to Hawaii is her secret wish.

Clubs: FHA 1, Delegate to Nashville, Latin 2, Representative to May Court 3, President of Commercial Club 4, Secretary of Senior Class, Class President FHA.



SHIRLEY KUYKENDALL

Shirley's interests is in things domestic. That makes a good future, none can protest it. She's industrious, fun-loving, full of life, altogether she's due to be a good wife.

Clubs: Commercial 4, FHA 1-2-3, DE 4.



WANDA HOPKINS

Wanda, we know, will be a success. As a writer she is already best. She left a record almost perfect at school, and here the teachers you cannot fool.

Clubs: DE 4, Reporter, FHA 1-2-3, Beta 3-4, Commercial Club 4; Purple and Gold Staff 3-4, Annual Staff 4, Teen Timers 1-2, Basketball 3.



GEORGE LACKEY

Witty and laughing, always around; when you need a friend, Lackey can be found. His day as sheriff was his best day. He'll remember this when he's away.

Clubs: FFA 1-2-3, DE 4, Treasurer, Band 2-3, DE Delegate to Nashville.



PEGGY LEACH

Cute in stature, and very smart, a friend of all and kind at heart. A teacher she wants to be some day, and so she will somehow, some way.

Clubs: FHA 1-2-3-4, Library 4, Teen Timers 3-4, Band 4, May Day Representative 4.



EDITH LOCKE

Eky's idea of a wonderful life, is to be a good mother and a perfect wife. Here's her advice to ambitious girls, husbands don't like you pinned up for curls.

Clubs: Glee 3, Teen Timers 1-2, DE 4
FHA 1-2-3, Basketball Manager 4.



VIRGINIA MAHARREY

Virginia Maharrey is fond of Home Ec. She'll make a wonderful wife. The man she marries, she'll never henpeck. They'll both travel a happy life.

Club: FHA 1-2-3-4.



CAMILLE KELLEY

Sweet in ways and smart in books, lovely face and friendly looks, Camille's as friendly as she seems, she looks at you with eyes that gleam.

Transferred from Messick High School.
Clubs: FHA 1-2, Historian, Paper Staff, Y-Teens 2, Junior Red Cross Representative 2, Campus Sweetheart Maid 2, Thespians 3, Speech Council Vice President, Played in "Our Town" 2, Played in "Twixteen" 2, Senior Play 4, Commercial Club reporter 4.



MARTHA MASSEY

Slim in feature, keen in wit, behind a desk she'll someday sit. With her ambitions and looks combined, a job won't be so hard to find.

Clubs: FHA 1-2-3-4, Glee 1-2-3, Commercial 4, Teen Timers 1-3-4.



KENNETH McCLAIN

A happy smile and friendly hello. Kenneth speaks wherever he goes. He's very persistent and he proved it so, four years of football and never a foe.

Clubs: FFA 1-2-3-4, C Club 4, Football 1-2-3-4, Baseball 1-2-3-4.



ELDON MCDANIEL

"Rastus" works at the Five and Dime, he has no future plans in mind. He was so good in the DE skit, he may replace Dagmar as a T.V. bit.

Clubs: Latin 2-3, Beta 3, DE 4.



FRANK MCINTOSH

To read the history of the war of our State, is Frank's hobby and delight. He also likes to start a debate, although he's never involved in a fight.

Clubs: FFA 1-3, DE 4, Glee 1-2-3.



JEANETTE MILLER

Lucky is Dudley who will be her mate. Her generous heart will make his cares abate. If she goes through her work with her usual ease, her future life will be a breeze.

Clubs: FHA 1, Glee Club 1-3, Library 2-3-4, President 3-4, Class Reporter 4, Annual Staff 4.



JIMMY McDONALD

Jim wants an automobile. A Pontiac convertible is his ideal. Three places he would like to go, Canada, China, and Mexico.

Clubs: Glee Club 2-3, Baseball 2.



BOBBY MCDIVITT

Whether dressed in trousers or sometimes a skirt, our Bobby is destined to be classed as a flirt. Hunting, fishing and dating, each is his hobby. Would rabbits, fish, or girls be most becoming to Bobby?

Clubs DE 4, Glee 1-2-3, FFA 1-2.



BETTY MCKEE

What do you think Betty McKee has always wished that she could be? A secretary sounds like lots of fun, but the best part about it, it brings in the mon.

Clubs: FHA 1, Commercial 4.



DAN MCLENNAN

Dan is a successful sportsman. He bags them in stream or fields. What's more, he's a clever farmer. Nature to him it produce yields.

Clubs: FFA 1-2-3-4, Band 2-3, Glee Club 1, Teen Timers 1-2.



JOE NAIFEH

Naifeh's been a manager of many a team. Up to his eyes in equipment he's seen. For making friends, he has a good start. Could this be because of his generous heart?

Clubs: Latin 2, Glee 3, C Club 3-4, Math 3, Football Manager 1-2-3-4, Basketball Manager 1-2-4, Boys' County 1, Annual Staff 4, Teen Timers 1-3-4.



TOMMY MOOSE

Tommy Moose has brains galore, and as time goes on, she'll acquire much more. To be a secretary is her ambition, and we know someday she'll secure this position.

Clubs: FHA 1-2, Band 2-3-4, Beta 3-4, Commercial 4, Purple and Gold Staff 4.



JUANELL MURPHY

Juanell's desire is to be a clerk. To accomplish this will take hours of work. Hours of work will she gladly give, secretary to a T.V. star she can live.

Clubs FHA 1-2, Commercial 4.



PEGGY PARIMORE

She doesn't want to set the world on fire. To be a nurse is Peggy's desire. Perhaps she'll settle for a spouse, some blue jeans, and a little white house.

Clubs: FHA 1-2-3, Teen Timers 1-2-3, Band 2-3-4.



SHIRLEY PARR

Shirley's friends are sure of this, her bubbling fun they all will miss. This one thing they will surely know, wherever she is, she'll be on the go.

Clubs: FHA 1, Commercial 4.



CARL PANNELL

He's excellent in lots of sports, almost any you can name. We feel that in the years to come, he'll be placed in the Hall of Fame.

Clubs: DE 3, Vice President C Club 1-2-3-4, Math Club 3, President Senior Class, President Junior Class, Treasurer Sophomore Class, Vice President Freshman Class, Football 1-2-3-4, Football Captain 4, Basketball 1-2-3-4, Baseball 1-2-3-4, American Legion Baseball 1-2-3, Who's Who 3, May Day Court 3, All West Tennessee and All Big Ten Football 4, All Regional Basketball 4.



MATTIE LOU PITTS

Lu-Lu wants to be a nurse. Healing portions she can disburse. Perhaps she'll marry a patient she's cured. Fortunate fellow—his fortune's insured.

Clubs: FHA 1-2-3, Library 3-4, DE 4.



ANNETTE POOLE

Energetic, capable, small as a flea, this all of her life she's bound to be. Don't confuse her efficiency with her size, wherever you put her she'll equalize.

Clubs: Library 4, Reporter, Commercial 4, FHA 1-2, Purple and Gold Staff 4.



GENEVA POOLE

"Poolie" may travel for a while, and if she'll only keep her smile, she'll make a friend for every mile.

Clubs: FHA 1-2, Glee Club 3, Commercial 4.



MARY LOUISE RALPH

A singer she would like to be, and very well equipped is she. Plenty of experience she has on hand. Maybe she'll sing with the best in the land.

Clubs: Glee 2 3, Band 2-3, FHA 1, Commercial 4, Teen Timers 3.



RUTH SIMPSON

Another secretary we have here, efficient, cheerful, an absolute dear, married like many, and happy as can be. Modern Juno—or a reasonable facsimile.

Clubs FHA 1-2-3, Glee 1-2-3, Latin 2-3, 2nd place in West. Tenn. Latin tournament, Commercial 4, Beta 3-4, President 4, Convention 4, Purple and Gold Staff 4, Sophomore Representative in May Court 2.



SHIRLEY ROSE

Rosie is her nickname, in blue she looks divine. Chicken is her favorite food, and pretty is her incline.

Clubs: FHA 1, Library 3-4, DE 3, Basketball 2-3-4.



BETTY SACKS

You have always heard that still waters run deep. From a frie hip with Betty, a rich harvest you'll reap.

Clubs: FHA 1-2-3-4, Glee Club 1-2-3, Commercial 4, Treasurer.



JAMES SAGE

Imagine Scrubby as a US Marine. He'll be the best dressed soldier you've ever seen. He's sure to come back and farm all his life, and get Boots Eubanks to be his wife.

Clubs: FFA 1-2-3, Treasurer 3, DE, President. Vice President of West Tenn., Representative to State Convention at Nashville.



SARA ANN SAGE

A singer Sara Ann is bound to be, Metropolitan, concert, or T.V. From Brighton to Byars-Hall she commuted by car. Such poise plus her good looks will carry her far.

Transfer from Brighton 3, Cheerleader 2, Freshman Queen 1, FHA 1-2-3, Song Leader 2-3, Teen Timers 3-4, Commercial 4, FFA Sweetheart 4.



JAMES STAFFORD

All types of sports James likes to play. He wants to be a coach some day. The Navy will send him around the world, then he'll settle down cause he's got a girl.

Clubs: FFA 1-2, C Club 1-2-3-4, Secretary-Treasurer 4, DE, Sergeant-at-Arms, Annual Staff 4, Freshman and Junior Class Reporter, Football 1-2-3-4, Basketball 1-2-4, Baseball 1-2-3-4.



MARY AVELON SASSER

Mary likes her chicken fried, and some day she wants to be a bride. Be neat as a pin, we know she can, and her house is sure to be spic and span.

Clubs: FHA 1-2-3-4, State Degree 4, Library 4, Secretary 4, Commercial 4, Teen Timers 1-2-3-4, Purple and Gold Staff 4.



WAYNE SELPH

Wayne's smart as he can be, says Canada he would like to see. Baseball is his joy and pride. He also likes his chicken fried.

Clubs: FFA 1-2-3-4, Reporter 3, President 4, Beta Club 3-4, Vice President 4, Math Club 3.



LAVERNE SHANKLE

Seldom ever will you see as well equipped a girl as she. Personality plus —add on good looks, it sounds too good, but, boys, she cooks.

Clubs: Glee 1-2-3, FHA 1-2-4, Song Leader 4.



ROSE MARIE SLOVER

Rose Marie has no great ambition. She doesn't care for a high position. Married is what she wants to be, and maybe raise a family.

Clubs: FHA 1, Historian, Teen Timer 1-2, Latin Club 2, Distinction in West Tenn. Latin Tournament, Annual Staff 4, Commercial 4, Beta 3-4, Treasure 4, Math Club 3.



KEITH TANNER

The fates to Tissie have been kind. They endowed her with beauty and a brilliant mind. She was a drum major and she worked on the play. Last, but not least, she was Queen of the May.

Clubs: Math 3, Teen Timers 1-2-3, Freshman Representative for Homecoming Queen, Basketball 1-2-3, Basketball letter 2, 3, Drum Majorette, Band 3-4, Who's Who 3, Football Queen 3, Beta Club 3, FHA 1-2, Annual Staff 1, Purple and Gold Staff 2-3-4, Senior Plav.



BETTYE SUE SMITH

This girl has eyes so big and brown, that seldom do you see her frown. To smile isn't hard for her to do, for friendly is Miss Bettye Sue.

Clubs: FHA 1-2, Commercial 3.



DOROTHY SMITH

Efficient, sweet and sincere, good sports from all we hear. Has many boys within her reach, this girl Dot is quite a peach.

Clubs: FHA 1-2-3, Commercial 4, I 4, Teen Timers 1-2, Basketball 1-2-3



JO ANN SMITH

Wherever there is a job to be done, pleasant and efficient Jo Ann's the one. She'll work like a trojan 'til the job's complete, and when she is through, her work can't be beat.

Clubs: FHA 1-2-3-4, Commercial 4, Annual Staff 4.



MALCOLM SMITH

Zip and pep and a tongue that is witty sums up the personality of playboy Smitty.

Clubs: Latin 2, Teen Timers 3-4, Cheerleader 2-3, Baseball 2-3.



BILLY WALK

Clever, witty, and on the ball, quite a fellow around Byars-Hall. Bill's good at sports, has lots of buddies. He gets by, but never studies.

Clubs: Math 3, Latin 2, C Club 2-3-4, Vice President 4, Junior Class Treasurer, Football 1-2-3-4, Basketball 1-2-3-4, Baseball 1-2-3-4, American Legion Baseball 1-2-3-4, Teen Timers 1-3.



CHARLENE STALLINGS

Noted for her beauty and industry, four years at Byars-Hall, busy as a bee. She's worked at Roper's, helped out at home; and now she has started one of her own.

Clubs: FHA, Commercial 4, Glee Club 3, DE 4, Band 2-3, Teen Timers 1-2.



CHARLES STRICKLAND

Extremely quiet and reserved, he hardly ever says a word. To go to Hawaii and swim in the bay, is what he'd like to do some day.

Club: FFA 1-2-3-4.



ROBERT TURNER

Pee Wee is a farmer boy. He gets from life much zest and joy. On the Florida coast he would like to swim, and guess whom he will take with him.

Clubs: FFA 1-2-3, Judging team, DE 4, Band 2-3, Basketball 1-2-3, Football 1.



ROSE ANN VEAZEY

She speaks just like Tallulah, and she blows a wicked horn. She types a rapid budget—In fact, a genius born!

Clubs: FHA 1, Glee 3, Commercial 4, Band 2-3-4.



KATHRYN WOOTEN

Wooten is editor of our Wildcat 53, did a wonderful job as we all can see. Prissy, petite, but cute as they come, at commercial art work she'll make the buyers hum.

Clubs: Latin 2-3-4, Treasurer 3, President 4, FHA 1-2-3-4, Beta 3, Purple and Gold Staff 3, Teen Timers 1-2-3-4, Delegate to Girls' State 3, Annual 3-4, Editor of Annual 4, Senior Play 4.



SHIRLEY WARREN

To go to Hawaii hopes Shirley Warren, to be a youth leader in this country foreign. Serious minded, she finds time for fun, but never until her school work is done.

Clubs: FHA 1-2-3-4, Parliamentarian 2, Purple and Gold Staff 4.



RICHARD WHITEHORN

Whether his friends call him Skip, Whitey, or Dick, his bank roll will be amazingly thick. He has the talent for all kinds of sports, but for his immediate future, it's planes, guns, and forts.

Clubs: FHA 1-2, C Club 3-4, Baseball 4, Basketball 1-2-3, Football 1.



MARY ELLEN WRIGHT

A sweeter girl you've never seen. The band was wise to choose her queen. And if some day she is a nurse, when we get sick we'll call her first.

Clubs: Commercial 4, FHA 1-4, May Court Representative 2, Band 3-4, Queen 4.



NINA YARBRO

Little and lively, smart as a whip, especially in typing she's full of zip. Nina as a secretary will be efficient, her Byars-Hall record is proof sufficient.

Clubs: Glee 1-2-3, FHA 1-2-3-4, Parliamentarian 3, Representative FHA Sub District 2-3-4, Beta Club 3, Commercial 4, Senior Play, Teen Timers 1-2-3.



FRANKLIN YARBRO

"Baby's" one ambition is life on the farm; He'll go to work at dawning before the clock's alarm!



MARION YARBROUGH

Laughing, smiling, never a bore, he's cracking a joke forever more. In Marion's crystal we all can see that he will make a good M.D.

Clubs: Latin 2, Teen Timers 3, Senior Play Prop-Manager 4.



JEANETTE YARBROUGH

Shoes and travel are her desire, both of these she will acquire. To accomplish this and keep it fair, she'll have to marry a millionaire.

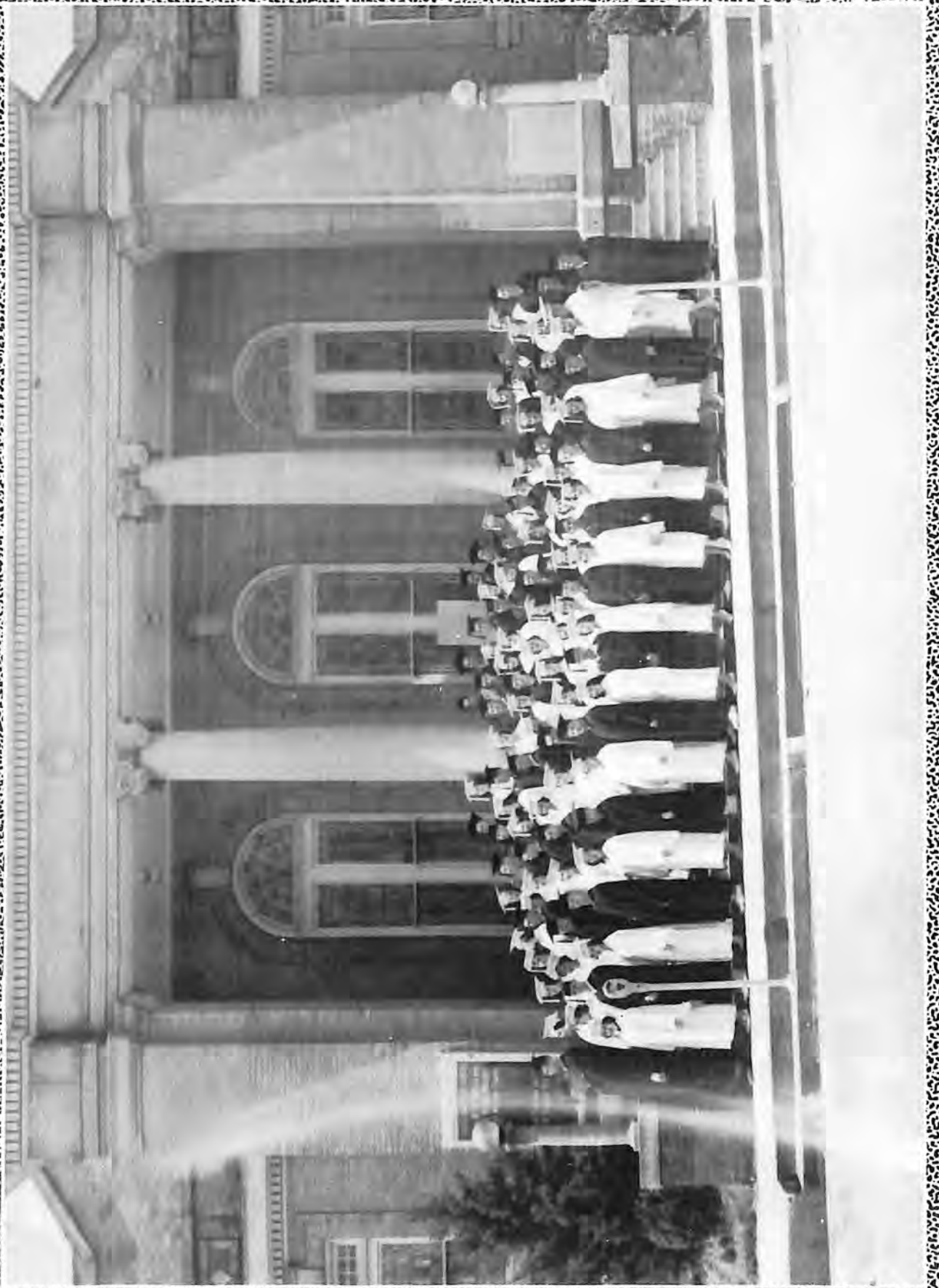
Clubs: FHA 1-2-3-4, Song Leader 2, Secretary 3, DE 4, Glee 1-2-3, Commercial 4, Teen Timers 3.



JIMMY YATES

A good photographer is Jimmy Yates, He's always present with his camera plates. Jim has a wonderful speaking voice, but the profession of baseball has first choice.

Clubs: Latin, DE 4, Annual Staff 3-4, Purple and Gold 4, Baseball 2-3-4, American Legion Baseball 2-3.



STUDENT



JOE GARDNER	<i>Reporter</i>
JERE HILL	<i>President</i>
BETTY GATLIN	<i>Treasurer</i>
ANN McDONALD	<i>Secretary</i>
NEIL RICE	<i>Vice President</i>



Barbara Barton



Glenda Baskin



Catherine Bearden



Bobby Beaty



Wanda Beaver



Veda Billings



Harry Bowden



Frances Brammer



Bobbie Brumley



Raymond Bryant



Harry Burk



Bobby Butler



G. K. Butler



L. W. Byrd



Martha Clowes



Yvonne Clowes



David Combs



Kay Cothran



Billy
Chumley



Paul
Chumley



Virgil
Dawson



Tom
Downing



Jane
Durham



Elizabeth
Farmer



John Paul
Farmer



Ranny
Farrell



Ann
Faught



Jimmy
Edens



Bettye
Fleming



Billy
Fleming



Dale
Fleming



George
Flowers



Nadine
Finley



Joe
Gardner



June
Gasson X



Bettie
Gatlin X



Charles
Gracey



Robert
Grant



Mary Jane
Green



Richard
Gookin



Jere
Hill



Georgia
Howard



Mildred
Hudson



Wayne
Hartley



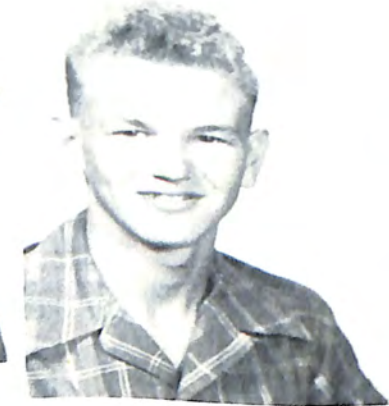
Helen
Hazelrig



Lionel B.
Leach



Barbara
Lowery



Harold
Mathis



Betty
Kelley



Jimmy
Kelly



Ann
McDonald



Laura Ann
McGowan



Myrna
McIntosh



Bessie Mc
Daniel



Bobby Moore



Wayne Ralph



Neil Rice



Warner Richardson



Virginia Rickard



Edward Roberts



William Rogers



Dorothy Scroggins



Paula Scott



Wayne Robbins



Katherine Shoaf



Jordan Sherrod



Jack Simonton



Palmer Smith



Robert Selph



Thomas Smith



Robert L. Sorrell



Billy Jack Stafford



Charles
Stephenson



Wayne
Stiles



Mary Nell
Thomas



Everett
Stafford



Ernestine
Underhill



Richard
Utley



Stanley
Wages



Jerry
Thornton



Milton
Thornton



Marshall
Watson



Raymond
Weir



Julian
Williamson



Hugh Lee
Waits



Mazie
Warmath



Jimmy
Wood



Wilma
Wiley



Annette
Yarbro



Estella
Wilson

SPRING HORNBILLS



MORRIS JOBE	<i>Vice President</i>
BARBARA FLOWERS	<i>President</i>
JACKIE HOUSE	<i>Treasurer</i>
KAY MOORE FRIZZELL	<i>Secretary</i>



Louis
Atkins



Billy
Adkerson



Jo Rivers
Baxter



Kenneth
Bennett



Irma Rose
Billings



Bobbie
Bowles



Darrel
Bringle



Martha Sue
Bringle



Douglas
Bryan



Leon
Burk



Cabe
Burlison



Malcolm
Burlison



Bobby
Byrd



Mamie
Byrd



Helen
Campbell



Betty Jo
Cook



Bernale
Cooksey



Danny
Cranford



Amy
Daniel



Louis
Daniel



Larry
Daugherty



Doris
Dawson



Amy
Deverell



Betty
Deverell



Dolores
Dunn



June
Dunn



Margaret
Durham



Mack
Easley



Beulah
Eubanks



Rodney
Eubanks



Betty Sue
Faight



Benjamin
Faulk



Earl
Faulk



Floyd
Fleming



Jean
Fleming



Barbara
Flowers



Marie
Fowler



Kaymoore
Frizzell



Virginia
Fryer



Robert
Fuller



Jean
Gasson



Marilyn
Gilbreath

PHOTOGRAPH
NOT AVAILABLE



Shirley
Gordon



Bruce
Gray



Margie
Hadley



J. D.
Hall



Shelby
Hamblin

Tommy
Goodman



Bill
Harris



Lynn
Hartley



Betsy
Harvey



Billy
Hazelrig



Welton
Howard



Wilbur
Howard



Johnny
Howard



Jacqueline
House



Ida
Huggins



Dan
Jennings



Doris
Jobe



Morris
Jobe



Neal
Johnson



Tommy
Johnson



Ruby
Jones



Sandra
Jones



Bernice
Lackey



William
Maharre



Dorothy
Maloy



Bobby
Marshall



John
Marshall



Eddie
Martin



Carolyn
Max



Betty
McClain



Peggy
McDivitt



Hubert
McMillin



Ronald
Miller



Betty
Murphy



Joanne
Nolan



Bessie
Owen



Roy
Parimore



Dorothy
Parker



Mary E.
Patrick



Mary Pearl
Perry



R. H.
Poole



Betty
Rice



Martha
Roach



Ruby
Roach



Betty Lou
Roberts



Tim
Sloan



Elizabeth
Smith



Patsy
Smith



Jimmy
Sorrell



Jeannette
Springer



Bob
Stafford



Billy
Trantham



Frances
Trosper



Carl
Turner



Mary Janet
Turner



Richard
Veazey



Edith Claire
Walker



Reba
Warren



Patsy
Welshans



Doris
White



Helen
Whitehorn



Barbara
Williams



Austin
Worley



Robert
Wright



Bobby
Yoakum

*Best Wishes to the Faculty and the Student Body
Special Congratulations to the Graduating Class*

TOOLEY-MYRON

STUDIO

185 Madison Avenue
Memphis, Tennessee

FRESHMEN



EDSEL ANDERSON	<i>Vice President</i>
BOB HASTINGS	<i>President</i>
HASKIN DAVIS	<i>Treasurer</i>
GAIL SMITH	<i>Secretary</i>
BILL YOUNG	<i>Reporter</i>



Harold Ammons



Carolyn Anderson



Edsel Anderson



Tommie Armstrong



Patricia Baker



Laura Barron



Bobby Baskin



Kim Baxter



Gaylon Beasley



Jimmie Beasley



Jo Ann Bishop



Leroy Boyd



Margie Bowles



Jimmy Bradshaw



Keefer Bradshaw



Shirley Bradshaw



Betty Jo Bringle



Beverly Bringle



Wanda Bringle



Photo not AVAILABLE

Gardner Brooksbank



Marsy Brown



Monteen Bull



Janice Burgess



Jick Burk



Jo Burlison



PHOTO NOT AVAILABLE

Emmanuel Campbell



Carolyn Carter



Anna V. Cobb



John W. Cook



Larry Combs



Morris
Cothran



Hazel
Cox



Jimmy
Craig



Janie
Daniel



Marcia
Daniel



Richard
Daniel



Haskin
Davis



Shirley
Dawson



Everett
Deen



Edward
Durham



William
Earwood



Currie
Erwin



Paul
Erwin



Ezell
Ferrell



Richard
Fisher



Wilda
Forbess



Jo Ann
Gasson



Hughes
Gay



Billy
Gilbreath



Beverly
Grugett



Alma
Hall



Floyd
Harris



Emmett
Hartsfield



Bob
Hastings



Walter
Hayes



Jean
Hindman



Billy
Hise



Martha Jo
Hopkins



Vonnie Sue
Jackson



Susan
Johnson



Gwyn
Kelley



Charles
Keltner



Myrna
Lavelle



Earl
Lents



Jimmy
Martin



Mazie
Mashburn



Hildred
Massengill



Joe
Massey



Wayne
Max



J. B.
Maxwell



Donald
Mills



Maxine
McBride



Jimmy
McCall



Jeanette
McDaniel



Drew
McFarland



Ann
McIntosh



Barbara
Knight



Janie
Mize



Joyce
Nason



Nat
Newman



Billy J.
Overton



Peggy
Overton



Jo Ann
Owen



Gary
Owen



Jimmy
Patrick



Patsy
Patterson



Mary E.
Peeler



Royce
Petty



Kay
Pinner



Joe
Poole



Jimmy
Reeves



John
Rhodes



Dewey
Rice



Rosemary
Roberts



Virginia
Roberts



Phil
Rogers



James
Rose



Lee June
Ruff



Lucy
Rushing



Jack
Sanford



Sara Jean
Sartain



Eugene
Scudder



Marilyn
Selph



Shirley
Shahan



Jerry
Shoaf



John
Shoaf



Nelson
Shoaf



Alice
Short



Rayburn
Sims



Diane
Slover



Dan
Smith



Gail
Smith



Kenneth
Smith



Lillian
Smith



Photo not
Available

Patsy
Smith



William
Stewart



Bobby
Stiles



William
Stiles



Betty
Strickland



Stanley Taylor



Monte Temple



Idanna Thurmond



Smitty Townsend



Sidney Turner



Annie Vanstory



Jan Vaughan



Nancy Wages



Janice Walk



Marshall Walk



Mary Joyce Watkins



Carolyn Watson



Lewis Webb



Sara Whitehorn



Betty Williams



Jimmy Williams



Jerry Wilson



Louise Woodard



Kenneth Warren



Kay Wooten



E. C. Worley



Betty Ann Yoakum



Bill Young



Phonograph Records
COLEMAN APPLIANCE CO.
Phone 669

CRESCENT BEAUTY SHOP
For Appointment Call 879





Most Handsome
ABNER DAVIS

Most Beautiful
KEITH TANNER



MAX WEIS
JEWELRY CO.
Covington, Tennessee

Featuring
Sterling by:
Towle
International
Lunt
Watson



KEITH TANNER

Most Popular
GEORGE GRACEY

INEZ BILLINGS

Best Wishes and Congratulations

SENIOR CLASS of 1953

MAYES HOWARD LUMBER CO.

Covington Mason Millington Henning



Best All Around
INEZ BILLINGS BILLY WALK

YOUNGER'S JEWELERS

Elgin—Longines
Bulova—Hamilton

Bluebird—Diamond
Gorham—Silver

Gifts For Every Occasion

COVINGTON

RIPLEY





Friendliest

GILES FORBESS

WANDA BEAVER

"Since 1910"



778 Phone 583

SHELTON
ERVICE
ATISFIES

SHELTON MOTOR COMPANY



Cutest Girl
JUNE GASSON

Wittiest Boy
GEORGE LACKEY

Your Ambition Should Be To Save As Well As To Get

THIS BANK WILL HELP YOU SAVE

Member F.D.I.C.





Most Athletic
DOROTHY SMITH CARL PANNELL

McDANIEL MOTOR CO.

SALES

SERVICE

Complete Automobile Repairs





Most Courteous Boy
REECE CORDER

Best Dressed Girl
MARY JANE GREEN

MOORE BROS.

Mobil Products — Phone 2454

Complete One Stop Station

Mobilgas

COVINGTON





Most Likely to Succeed
LESLIE ANN HARVEY GEORGE GRACEY

Cherry's
DEPARTMENT STORES
WEST TENNESSEE'S GREATEST STORE
COVINGTON, TENN.

*Compliments of West
Tennessee's Greatest Store*
COVINGTON, TENNESSEE

Phone 2664



DAVID FERGUSON
KATHRYN WOOTEN
American Legion Award

RUTH SIMPSON
Salutatorian

WAYNE SELPH
Valedictorian

ROSE ANN VEAZEY
J. Robert Orton Award

BILL BURNETT
F.F.A. Scholarship

LESLIE ANN HARVEY
Best Girl Citizen

SARA ANN SAGE
F.F.A. Sweetheart

RAYMOND BRYANT
Boys' State

WILMA WYLIE
Girls' State

W. H. WOOTEN
Distributor
PAN-AM PETROLEUM PRODUCTS
PAN-AM products fine as they come





BETA CLUB

Front row: Ernestine Underhill, Rose Marie Slover, Katherine Shoaf, Ruth Simpson, President; Mazie Warmath, Ann Burlison, Secretary; Wilma Wiley.
Second row: Robert Louis Sorrell, Raymond Bryant, Jere Hill, Wayne Selph, Vice President; Betty Gatlin, Tommy Moose, Miss Ross, Sponsor.

Not in picture: Wanda Hopkins, Bobby Butler.

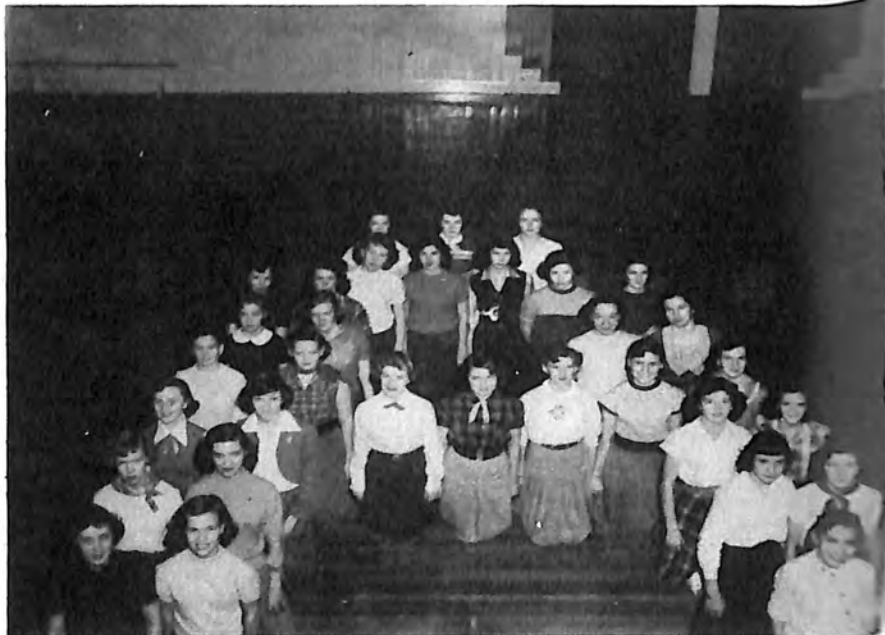
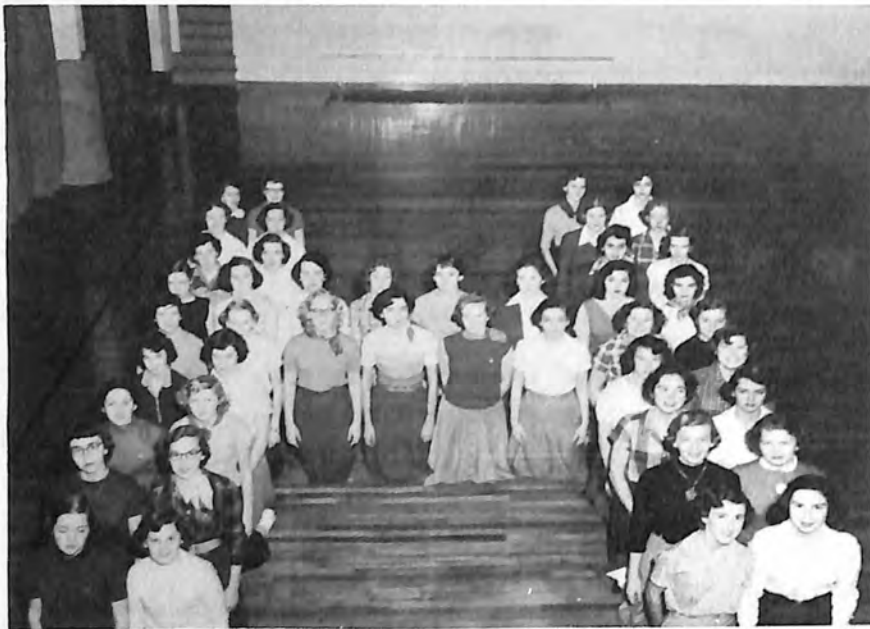
Congratulations to
The Graduating class of 1953
GRACEY, BEASLEY & SAGE CO.

"Your Family Shoe Store"

Phone 827



Miss Frances Rast
Sponsor



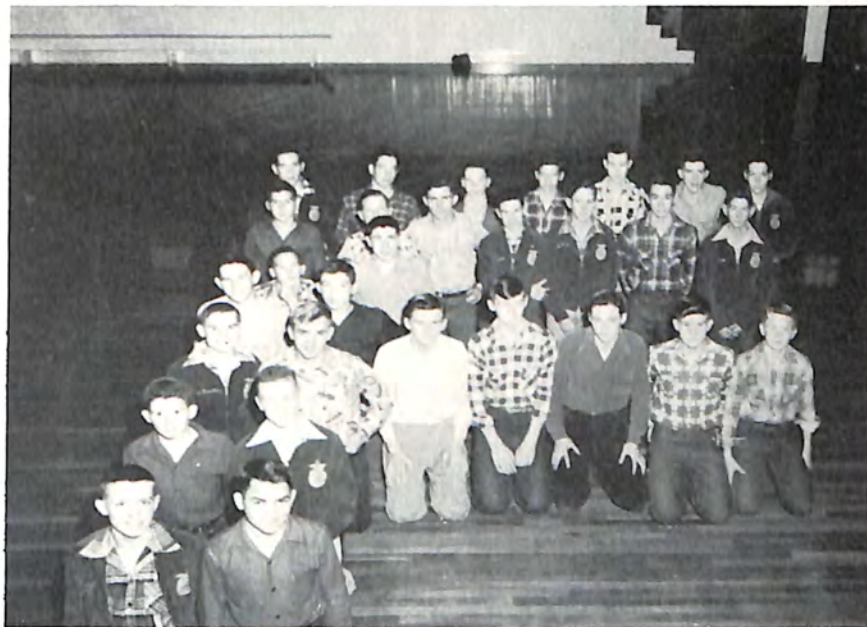
FUTURE HOMEMAKERS of AMERICA

Veda Billings *President*
 Wanda Beaver *Vice President*
 Paula Scott *Secretary*
 Barbara Barton *Treasurer*

Jo Ann Gasson *Historian*
 Mary Avelon Sasser *Reporter*
 Mamie Byrd *Parliamentarian*



Mr. C. E. Johnson
Co-Sponsor



Mr. Lewis Hunt
Co-Sponsor



FUTURE FARMERS of AMERICA

Wayne Selph *President*
 Neal Johnson *Vice President*
 Carl Turner *Secretary*

Kay M. Frizzell *Treasurer*
 Raymond Bryant *Reporter*
 Wilbur Howard *Sentinel*



COMMERCIAL CLUB

First row: Betty McKee, June Gasson, Betty Kelley, Annette Poole, Veda Billings, Vice President; Camille Kelley, Reporter; Nancy Calhoun, Frances Brammar, Helen Hazelrig, Mary Nell Thomas, Mary Elizabeth Farmer.

Second row: Rose Ann Veazey, Mary Avelon Sasser, Katherine Shoaf, Emily Harvey, Estella Wilson, Betty Sacks, Treasurer; Barbara Lowery, Shirley Warren.

Third row: Shirley Parr, Tommy Moose, Yvonne Cloves, Laura McGowan, Mazie Warmath, Martha Massey, Nina Yarbrow, Mary Barron, Ruth Simpson.

Fourth row: Margaret Jobe, President; Mary Jane Green, Ernestine Underhill, Jimmy Kelly, Wayne Hartley, Jordon Sherrod, Giles Forbess.

Fifth row: Juanell Murphy, Dorothy Scroggins, Mynna McIntosh, Annette Yarbrow, Wilma Wylie, Bessie Marie McDaniel, Betty Gatlin, Ann McDonald, Betty Sue Smith.

Sixth row: Mrs. Lewis Hunt, Joann Smith, Beauton Bowden, Mary Louise Ralph, Rose Marie Slover, Mary Ellen Wright, Kay Cothran, Catherine Bearden, Yolande Faulk.

Seventh row: Wanda Beaver, Secretary; Ann Burlison, Melissa Carson, Milton Thornton, Paula Scott, Sara Ann Sage.

Not pictured: Barbara Barton, Joanne Black, Lois Mills, Jeanette Yarbrough, Shirley Kykendall, Wanda Hopkins, Lynn Eubanks, Dorothy Smith.

LIBRARY CLUB



Mrs. Shoaf
Sponsor

First row: Jeanette Bowden, Mary Avelon Sasser, Annette Poole, Corrinne Currie.
Second row: Beauton Bowden, Sylvia Ames, Mattie Lou Pitts, Shirley Rose.
Third row: Emily Harvey, Peggy Leach, Helen Hazelrig, Veda Billings.
Fourth row: Mary Janet Turner, Frances Brammer, Wilma Wylie, Katherine Shoaf.

Compliments of
HUGHES GROCERY COMPANY, INC.
FAIRY FLAKE and BEAUTY BAKE FLOUR

Compliments of
Marshall-McQuiston Co.

PHONE 2481 AIR-CONDITIONED
Covington, Tennessee



Scenes
from
ANNUAL STAFF
PARTY
May 12, 1953



Congratulations to the Class of '53
WALKER CHEVROLET CO.

CHEVROLET — OLDSMOBILE — CADILLAC

Cars Trucks Service

"A Business Fair Dealing Built"

PHONE 781



LATIN CLUB

Bottom row: Sandra Jones, Mamie Lou Byrd, Helen Campbell, Dorothy Parker, Wilma Wiley, Vice President; Mary Janet Turner, Kathryn Wooten, President.

Second row: Betty Fleming, Jo Rivers Baxter, Katherine Shoaf, Betty Gatlin, Ernestine Underhill.

Third row: Leslie Ann Harvey, Barbara Flowers, Nancy Calhoun, Edith Claire Walker, Secretary; Mrs. Parkinson, Sponsor.

Fourth row: John Marshall, Tim Sloan, Robert Fuller, Dan Jennings, Reporter; Bill Harris.

Fifth row: Dick Hall, Jack Simonton, Robert Sorrell, Roy Parimore, Tommy Johnson.

Not in picture: Betty Rice, Billy Fleming.

Compliments

of

BOZO'S

Mason, Tennessee



DISTRIBUTIVE EDUCATION CLUB

First row: James Stafford, Sergeant-at-Arms; Frank Fortner, Vice President; Lynn Blalack, Secretary; George Lackey, Treasurer.

Second row: Bobby McDivitt, Joanne Black, Jeanette Yarbrough, Dorothy Deverell, Shirley Kuykendall, Geneva Poole, Ann Harvey, Dorothy Smith, Charlene Stallings, Mattie Lou Pitts.

Third row: Frank McIntosh, Jimmy Burlison, Robert Turner, James Faulk, Jimmy Yates, Eldon McDaniel, Jimmy Griggs, Jimmy Chapman, Raymond Judy, Co-ordinator.

Not pictured: Wanda Hopkins, Reporter; Edith Smith.

SHOAF & HERSBERGER FURNITURE COMPANY, INC.

West Liberty Avenue
HOME of FINE FURNITURE
Gibson Appliances — Armstrong Inlaid Linoleum
Call Us For Free Estimates
"Terms to Fit the Budget"



Butler



Burgess



Chapman



Craig



Davis



Downing



Faulk



Fortner



Frizzell



Hartley



Hammons



Johnson



Gracey
President



J. Stafford
Secretary-Treasurer



Pannell
Football Captain



McClain



Naifeh



Robbins



T. Smith



P. Smith



Rogers



B. Stafford



E. Stafford



Stephenson



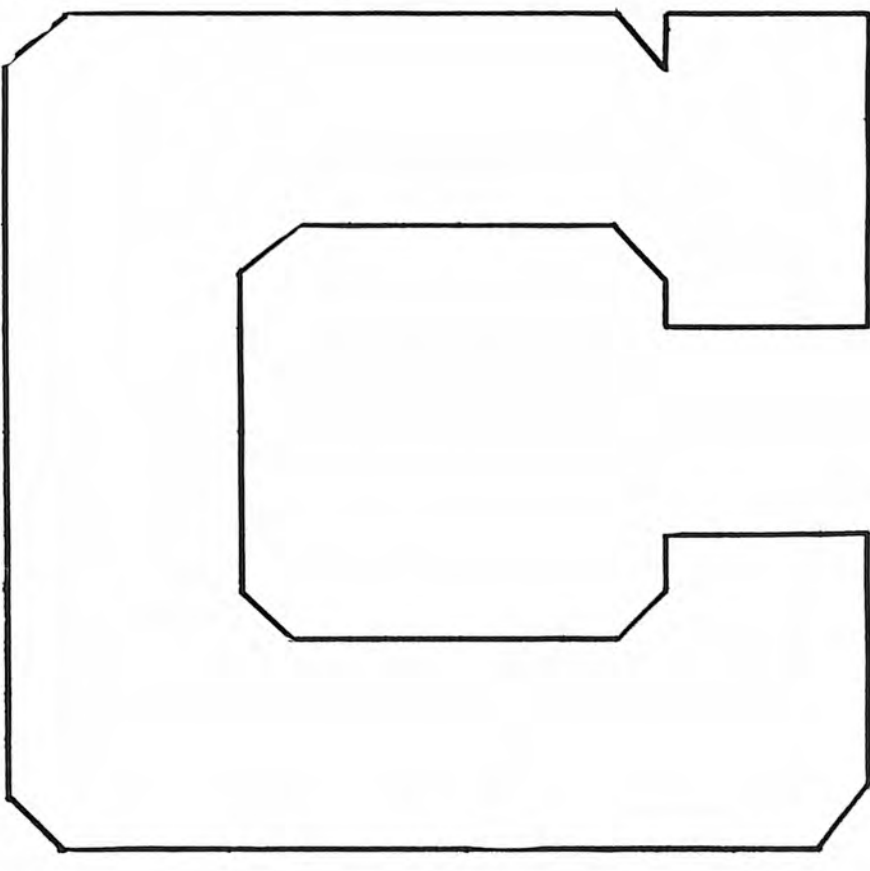
Thornton



Utley



Whitehorn



Walk
Vice President



Hill
Reporter



Gardener
Basketball Captain

Purple and Gold

COVINGTON, TENNESSEE. NOVEMBER. 1952

Spring Fever Visits Many B-H Students

Spring, the most wonderful season of the year! After a cold, rainy winter, the spring sun and warm breezes bring a wonderful feeling. Even though the springtime strikes! Imp called laziness

Spring fever is a thing of a magic. For hundreds of years it has been busy. Most cases

Convention Ends By Busy FHA Girls

If you are looking for a new idea for your school, perhaps you have noticed girls with suitcases on their backs. They are on their way to the FHA Convention near Memphis, Tenn. The girls were there for a week, and they returned with a wealth of ideas. The girls who attended were: Barbara Underhill, Ester Walker, and Carolyn

Alice in Wonderland Is May Day Theme
As the closing of school draws near, there is a feeling of excitement in the air, and the thought of a May Day celebration is on the minds of many. The theme for the closing of school is "Alice in Wonderland". The girls of the school are busy preparing for the celebration, and they are looking forward to a most enjoyable day.

PURPLE AND GOLD

Published every six weeks by the students of Byars-Hall High School, Covington, Tenn.
STAFF 1952-53

- Editor Leslie Ann Harvey
- Assistant Editor Melissa Carson
- Make-up Editors Calvin Creasy, David Ferguson
- Sports Editors Raymond Bryant, Mary Avelon Sasser
- Club Editor Nancy Calhoun
- Society Editor Ernestine Underhill
- Feature Editor Kip Shoaf
- Exchange Editor Ann Burlison
- Humor Editor Sandra Jones
- Photographers Bobby Butler, Jimmy Yates
- Business Managers George Gracey, Keith Tanner
- Circulation Managers Roy Parimore, Charles Stephenson
- Reporters, Wilma Wylie, Jo Hall, Laura Ann McGowan, Tommy Johnson
- Proof Readers Everett Stafford, Jo Rivers Baxter, Wanda Hopkins, Edith Clair Walker
- Typists Shirley Warren, Ruth Petty, Sylvia Ames, Annette Poole, Tommie Moose
- Sponsor Mrs. Lewis Hunt



Wildcats Become '52 Tiny Bowl Champs
Covington after being invited to the Bowl and accepting, went to Rogers, Ark. and soundly trounced Halls by a score of 33 to 6. The team will attempt to repeat their success at the 26 of Halls, Ark. on Nov. 22. The team was coached by Mr. Rogers, who was assisted by Mr. Scott. The team was composed of the following: Maxine Moore, Mary Avelon Sasser, Jo Rivers Baxter, Wanda Hopkins, Edith Clair Walker, Shirley Warren, Ruth Petty, Sylvia Ames, Annette Poole, Tommie Moose, and Mrs. Lewis Hunt.

BHHS Homecoming Gala Occasion

Ending the football season with a "bang" was homecoming. To pop out until a big affair. Monday, November 11, the school prepared for the evening. Things started off right. There were first, since more as needed on this particular. To make things more exciting, almost every club decided it would participate in the parade and prepare a float.

Tuesday November 11, the class had meetings. They elected their representatives. They were: Maxine Moore, Mary Avelon Sasser, Jo Rivers Baxter, Wanda Hopkins, Edith Clair Walker, Shirley Warren, Ruth Petty, Sylvia Ames, Annette Poole, Tommie Moose, and Mrs. Lewis Hunt.

Covington FFA Is Winner of Contest

At the meeting on March 14 at Covington District, the five schools participating were: Byars-Hall, Ripley, Halls, Munford, and Covington. The contest was held at Byars-Hall. The schools presented floats, a truck, and a tractor. The contest was a most interesting one. The schools were so bright and their ideas were so original. The contest was a most successful one. The schools were so bright and their ideas were so original. The contest was a most successful one.



SPRING HAS ARRIVED—With the coming of spring classes get dull "We Shook the and everyone wishes they were out somewhere holding hands like the couple be presented in t



We Shook the Family Tree

Presented By

Senior Class of Byars-Hall High School

April 24, 1953

CAST

Jimmy Burgess	<i>Jimmy Dolson</i>
Frank Fortner	<i>Bob Dolson</i>
Keith Tanner	<i>Hildegard Dolson, who is tired of being a wallflower</i>
Camille Kelley	<i>Sally Dolson</i>
Leslie Ann Harvey	<i>Mrs. Dolson</i>
Inez Billings	<i>Ellie-May, Bob's heart throb</i>
Nina Yarbrow	<i>Jill, Ellie-May's friend</i>
Katherine Wooten	<i>Paige Mason, who likes to play postman</i>
George Gracey Jr.	<i>Freddie Shermer</i>
Reece Corder	<i>Mr. Dolson</i>
Corrinne Currie	<i>Mrs. Shermer</i>
David Ferguson	<i>Mr. Shermer</i>

Mr. E. M. Evans—Director

Jeanette M. Bowden, Emily Harvey—Backstage Managers

Mary Barron, Ann Burlison, Mattie Lou Pitts

Business Managers

Compliments

of

GEORGE D. GRACEY



MAJORETTES—Marye Jeanne Crigger, Sandra Jones, Estella Wilson, Keith Tanner, Drum Major-ette; Barbara Flowers, Marsy Brown, Paula Scott.

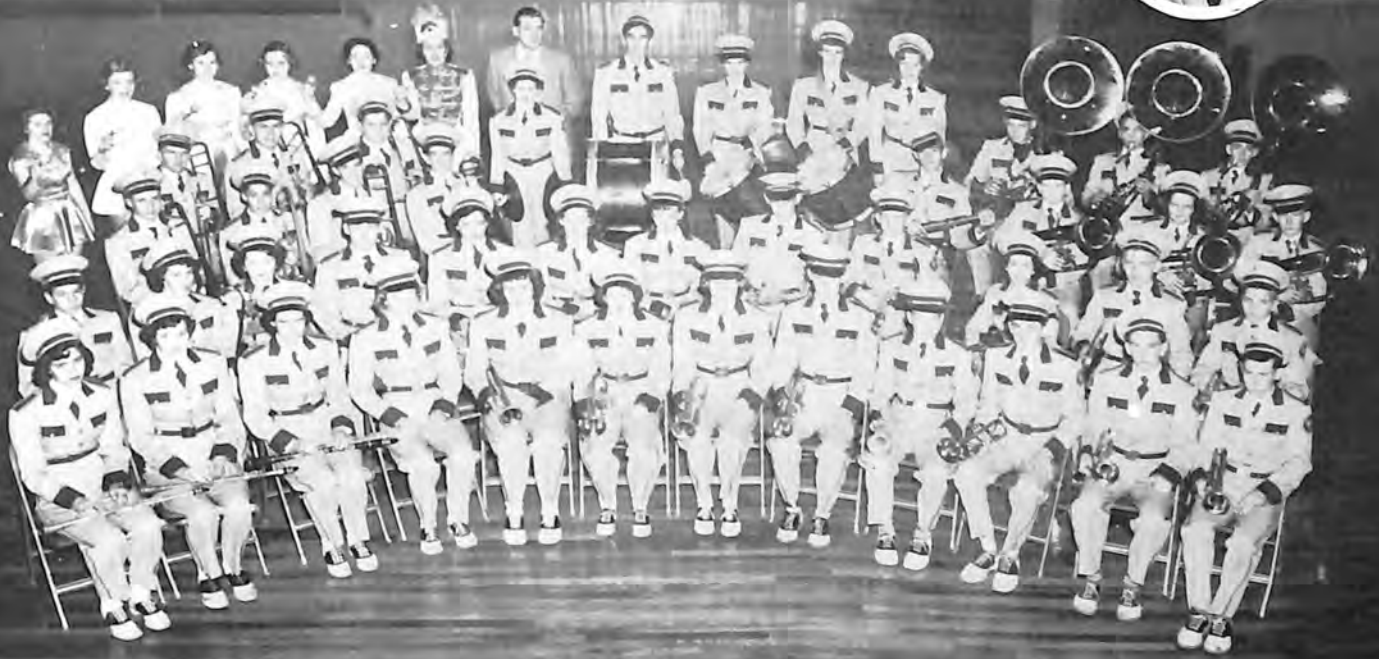
BAND QUEEN—Mary Ellen Wright.

RACO DRIVE IN THEATRE
and
RUFFIN AND RITZ THEATRES
of Covington, Tenn.

Extend their heartiest congratulations to you . . .

RUFFIN AMUSEMENT CO., INC.
RACO ENTERPRISE, INC.

Finest Theatres in West Tennessee and Kentucky



VARSITY BAND

First row: Kay Cothran, Mary E. Wright, Peggy Parimore, Barbara Williams, Bernale Cooksey, Frances Trosper, Betty Deverell, John P. Farmer, Lewis Webb, Robert Sorrell, Billy Adkerson, Toby Poole.
Second row: Tim Sloan, Irma Billings, Betsy Harvey, Jimmy Craig, Doris Dawson, Rose A. Veasey, L. June Ruff, Jimmy Hopkins, Ranny Farrell, Kim Baxter, Bruce Gray, Jimmy McCall.
Third row: Eugene Scudder, Richard Daniel, Reece Corder, President, Harry Bowden, George Lackey, Walter Hayes, Tommie Moose, Richard Veasey.
Fourth row: Junior Faulk, Jimmy Edens, Mack Easley, Helen Whitehorn, Bill Burnett, David Combs, Roy Parimore.
Standing: Paula Scott, Estella Wilson, Barbara Flowers, Sandra Jones, Marsy Brown, Keith Tanner, Mr. Mathews, Bill Hazelrig, June Gasson, Margaret Durham, Doris White.
Not present: Bobby Butler, Johnny Howard, Abner Davis, Sylvia Ames.

BADDOUR'S DEPARTMENT STORE
"FAMILY OUTFITTERS SINCE 1905"
Phone 823



Keith Tanner
Queen

MAY DAY COURT
Leslie Ann Harvey
Miss Byars-Hall

George Gracey
Mr. Byars-Hall



Theme

Alice In Wonderland



ATHLETICS



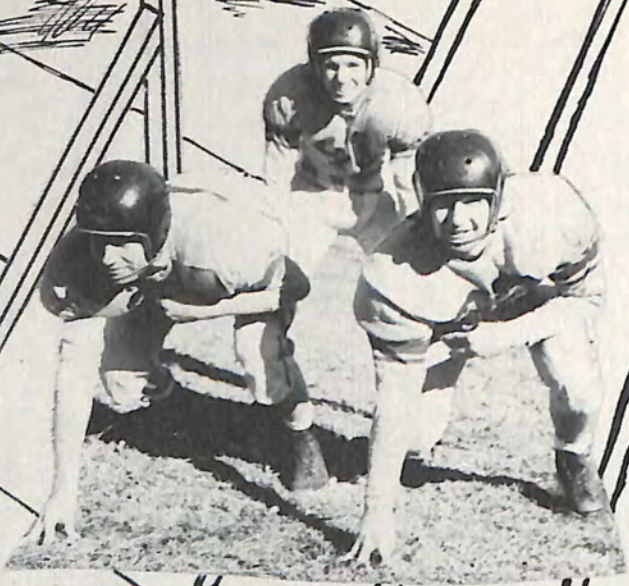
CHEERLEADERS

Sarah Jo Whitehorn
Lynn Blalack
Wanda Beaver
Edith Claire Walker
Katherine Shoaf
Jo Hall

MANAGERS

Joe Naifeh
Bill Harris
Buddy Forbess
Charles Stephenson





J. Stafford, R. Fuller, R. Utley



F. Fortner, G. Gracey, P. Smith



J. Gardner, K. McClain, K. Frizzell



B. Walk



T. Smith, D. Cranford, J. Craig, N. Johnson, J. Marshall, B. Rogers, J. Hill

Coaches Cullivan and Judy



B. Stafford, E. Faulk



W. Robbins



B. Butler



J. Burgess, J. Sorrell, B. Hammonds



I. Johnson, J. Chapman, D. Jennings, E. Stafford, C. Pannell, T. Downing, A. Davis



JUNIOR VARSITY

Front row, left to right: Robert Coley, Bill Hadley, Hal Roe, Joe Massey, Jimmy Naifeh, David Slover, Haskin Davis, Hildred Massengill, Walter Whitley, Edward Stallings.

Second row: George Noell, Malcolm Smith, Smitty Townsend, Richard Fisher, Punkin Anderson, Bill Young, Bob Hastings, Gaylon Beasley, Harold Ammons, Tommy Stubblefield.

Third row: Manager Dan Forbes, Buddy Deen, Gary Owen, Jack Sanford, James Ruffin, John Shoaf, Frankie Johnson, Stanley Taylor, Nat Newman, Coach Bill Scruggs.



*"Where you will enjoy
doing business"*

UNION SAVINGS BANK
A Friendly Bank

Homecoming Queen

Football Queen

CANDIDATES FOR HOMECOMING QUEEN



VEDA BILLINGS

Maxine McBride, Veda Billings, Jackie House Sylvia Ames.

SYLVIA AMES

SCHEDULE

Byars-Hall	19	Millington	0
Byars-Hall	7	Dyersbury	32
Byars-Hall	7	Ripley	42
Byars-Hall	21	Munford	12
Byars-Hall	7	Trenton	0
Byars-Hall	30	Martin	7
Byars-Hall	20	Bartlett	6
Byars-Hall	27	Somerville	19
Byars-Hall	20	Humboldt	7
Byars-Hall	14	Brownsville	0
Byars-Hall	33	Halls	6

2-5

125
131

TINY BOWL

JAMIESON
INSURANCE AGENCY
Telephone 651

Compliments of
J. T. CRAIG and CO. LOCKER PLANT
Manager
WILLIAM E. WHITEHORN, JR.

Compliments of
NOELL IMPLEMENT CO.

TAYLOR MOTOR SERVICE
Any Work On Any Car



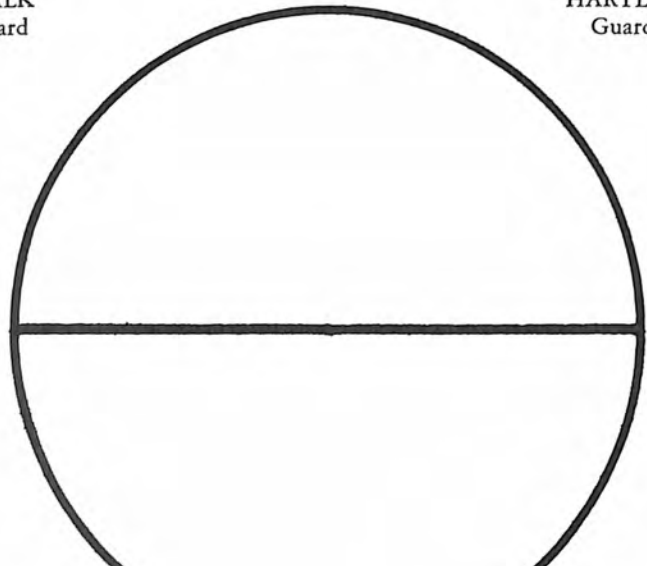
B. J. STAFFORD
Forward



THORNTON
Forward



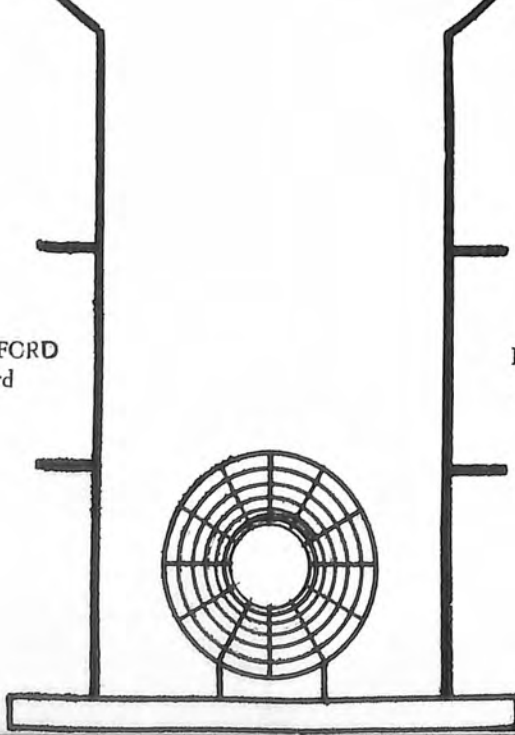
WALK
Guard



HARTLEY
Guard



J. STAFFORD
Guard



ROBBINS
Forward





GARDENER
Forward

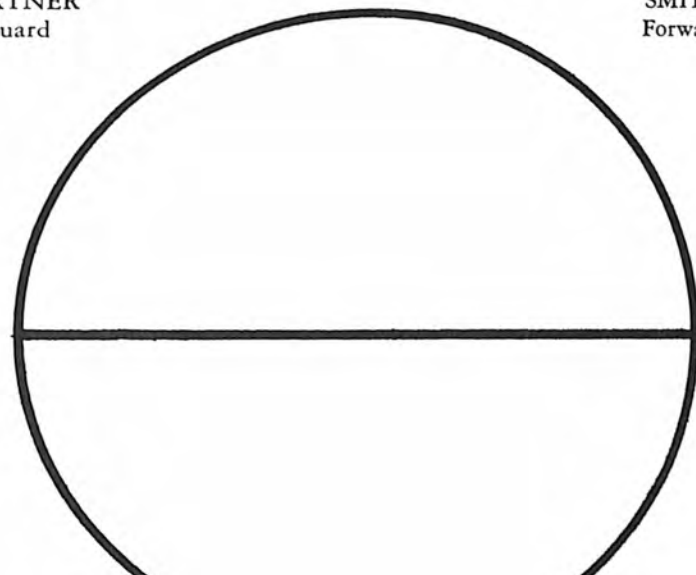


PANNELL
Center



FORTNER
Guard

SMITH
Forward



FRIZZELL
Center

HAMMONS
Forward





WAGES
Forward



BILLINGS
Forward



JOB
Forward



BARRON
Guard



UNDERHILL
Guard



WHITEHORN
Forward



HARTLEY
Guard

TURNER
Forward



ROSE
Forward



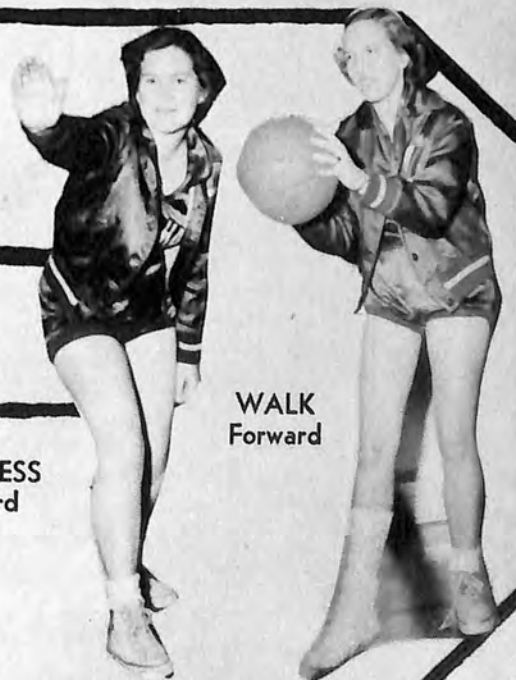
WYLIE
Guard



HADLEY
Guard



ANDERSON
Forward



BURGESS
Guard

WALK
Forward



COACH JUDY



COACH CULLIVAN

SCHEDULES of GAMES

GIRLS

<i>Byars-Hall</i>		<i>Opponents</i>	
27	Somerville	55	
32	Holy Names	34	
33	Bemis	41	
35	Sacred Heart	39	
37	Ripley	58	
21	Brighton	30	
36	Munford	31	
29	Somerville	58	
21	Halls	48	
55	Bemis	56	
37	Ripley	51	
27	Dyersburg	29	
22	Brownsville	34	
30	Halls	40	
19	Brownsville	33	
28	Brighton	30	
41	Munford	49	

TOURNAMENT GAMES

43	Sacred Heart	33
27	Halls	64

BOYS

<i>Byars-Hall</i>		<i>Opponents</i>	
55	Somerville	38	
41	Bemis	51	
55	Ripley	37	
51	Brighton	49	
63	Munford	28	
47	Somerville	33	
46	Halls	27	
55	Bemis	63	
60	Ripley	42	
60	Dyersburg	71	
64	Brownsville	49	
69	Halls	36	
65	Brownsville	49	
48	Brighton	36	
64	Munford	44	
74	East High	47	
56	Trenton	58	

DISTRICT 30 TOURNAMENT

66	Grand Junction	42
54	Brownsville	37
56	Brighton	37

REGIONAL

46	Central	58
----	---------------	----

Always Welcome at
McCORMICK DRUG STORE
Prescription Druggist
 Phone 525 We Deliver
 Lentheric and Yardley Agency

ONEY J. NAIFEH
Everything good to eat
 Phone 713

Compliments of
SANFORD AUTO SUPPLY

E. F. ROGERS
Where You Like What You Get
and Get What You Like
 Mason, Tennessee



BASEBALL 1953

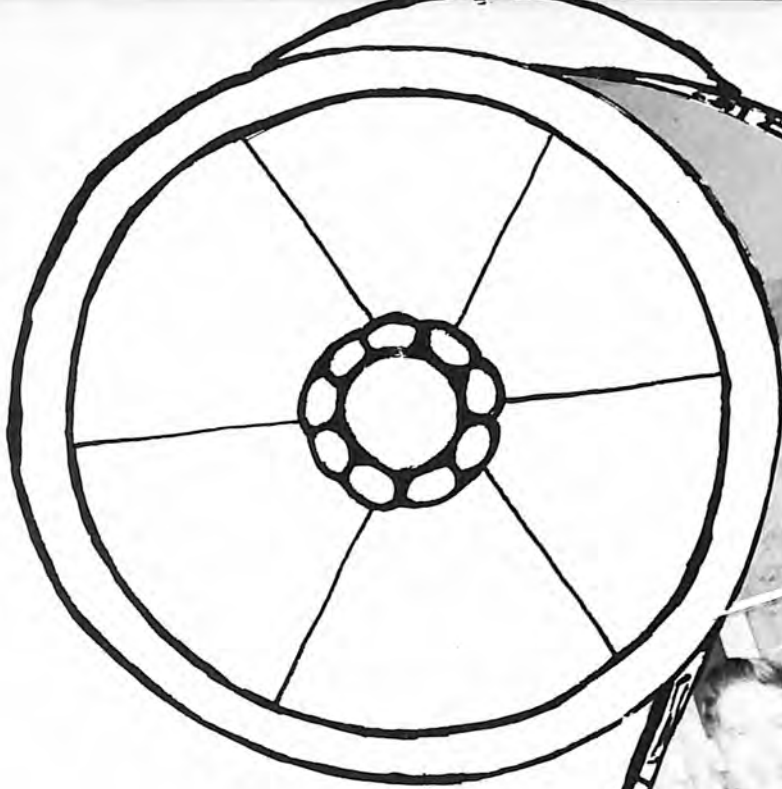
Front row: Jere Hill, Bill Young, Richard Whitehorn, Gaylon Beasley, Donald Smith, Wayne Hartley, Jimmy Yates, Richard Utley, Billy Jack Stafford, Carl Pannell.
 Back row: Coach Judy, Manager—Jimmy Craig, Wayne Robbins, Buddy Rogers, Punkin Anderson, James Stafford, Kay Moore Frizzell, Manager—Dan Jennings, Bobby Hammons, Earl Faulk.

Congratulations to our team for an unusually successful season

Compliments of
FEDERAL COMPRESS
 Covington, Tennessee

Compliments of
C. T. POINDEXTER
 Philco Dealer — Mason, Tennessee

CHARLES G. MOSLEY
GROCERY
 Fresh Meat Hardware



SEPTEMBER

- 1—School starts
- 9—Class officers elected
- 11—Class readers elected
- 12—First football game
- 16—Senior girls arrive

OCTOBER

- 14—Class officers pictures made for annual
- 16—Representatives for band carnival chosen
- 17—Members of annual staff announced
- 21-22—Senior pictures made
- 30—Band carnival

NOVEMBER

- 1—Elected representatives for Homecoming
- 14—Homecoming parade-game
- 26—Covington wins Tiny Bowl

DECEMBER

- 2—Hammons hands out cigars
- 5—First basketball game
- 19-25—Christmas holidays
- 23—Band versus Faculty basketball game
- 26—Rainbow dance



What you want
is a coke.



Compliments of

COCA-COLA BOTTLING CO.

Covington, Tennessee

JANUARY

- 5-6—Exams
- 12—Measured for caps and gowns
- 15—Football banquet
- 25—F.F.A.-F.H.A. big party

FEBRUARY

- 28—Boys won tournament

MARCH

- 9-10—Try-outs for senior play
- 24—D.E. dance and banquet
- 25-27—Class tournaments
- 30—Latin Club banquet
- 31—Basketball banquet

APRIL

- 3—Band concert
- 13-17—Evaluation
- 23-24—Senior picnic
- 28—Junior-Senior banquet

MAY

- 1—May Day program
- 10—Baccalaureate
- 12—Annual school party
- 14—Senior picnic
- 15—Graduation



HYDE PARK MILLS, IN
 COVINGTON, TENNESSEE
Extends
Sincere Congratulations
and Continued Success
to the
 1953 graduates of
 BYARS-HALL HIGH SCHOOL

Class Prophecy

It is the year 1963. The old town of Covington looks down upon another generation . . . the prosperous townsmen of today that only yesterday were its carefree loiterers.

A steady stream of people are rushing into a huge grocery store on the corner while the owner, Jeanette Miller Bowden, beams her approval. A sudden sound of brakes screeches and a truck comes to a sliding stop; George Lackey climbs out of the truck and goes into the main office of Turner's Dairy where we find Robert Turner occupying the president's chair. In the busy rush of traffic we hear a whistle blowing and find it is our own Wayne Bringle now a friendly motorcycle cop. While standing on the corner we hear an agonized yell from a second story window identifying the office of Dr. Marion Yarbrow, D.D.T., dentist (and how!); Rose Marie Slover, in "immaculate white," consoles the patients (or victims). A hubbub next door comes from the office of Jeryl Gray and Sanford Gilbreath, Covington's most brilliant lawyers; in the office we find Jimmy Burgess, a progressive farmer of our country, filing a lawsuit against someone for hitting one of his pedigreed cows.

George Gracey is the well-known Judge of the Circuit Court. Louis Jeter, Sheriff of Tipton County,

has Kenneth McClain as his right hand man. Looking into the window of Phil Duane's drug store, we see his diploma which he received last year. Also, we see an advertisement for a magazine with a picture of Tissie Tanner, one of the nation's leading models, on the cover. Down the street we see Covington's new library. The librarians are Sylvia Ames and Beaton Bowden. The library was a gift of Joe Naifeh, former sports announcer of Station BHHS, now owner of a chain of grocery stores.

Shirley Warren, B.S., M.S., now heads the Math Dept. at Byars-Hall. Down the hall we find Peggy Leach, B.S., M.S., Ph.D., keeping up with the family tradition. Naturally she's teaching senior English.

Across the campus we see smoke streaming out of the windows of the Vocational Building. After questioning a student we are informed that it is only Laverne Shankle teaching the Home Ec. classes to cook.

Sara Ann Sage is now a famous singer and television star in New York. She has the leading part in "I Can't Believe It." Edith Smith is now living in New York with her husband. We hear that Jo Hall is starring in the latest Hollywood hits. James Staf-

Old Strong Bank
TIPTON COUNTY FARMERS UNION BANK
Covington, Tennessee

M. A. WALKER & CO.
Since 1894
FARM
HARDWARE EQUIPMENT FURNITURE

B. L. OVERALL & SONS
Shell Oils Pontiac Cars
GMC Trucks — Allis Chalmers
Tractors and Implements

Compliments of
COVINGTON SUPER MARKET

MALEY FUNERAL HOME
To Serve Humanity Better
Covington, Tennessee

Compliments of
SAMPLE SHOE STORE
Bill Jennings

ford is now a famous hair stylist. Jeanette Yarbro is his long-suffering model. She is always appearing with latest hair styles crowning her head. Carl Pannel is coach of the (still) victorious Harlem Globe Trotters.

Some of our alumni have wandered far from home. Shirley Rose seems to have flown the highest. She is a stewardess on one of the Trans-Pacific planes. Also, we hear that James Sage is a pilot. Mary Ellen Wright is the travel agent for Trans-Atlantic Airlines. Pat Birmingham is a sales woman for the Ipana Toothpaste Company. Reese Corder is still making a name for himself in the entertainment world as a musician. Frank Fortner is now in Hong Kong tracking down spies for the F.B.I. Eldon McDaniel is the proprietor of a large resort in Florida. Calvin Creasy is still asking questions, only this time it's to the poor students at Southern California. Jimmy Chapman is still playing the game; now it's professional football. Bill Walk is managing the Gold Nugget Night Club in Las Vegas.

But, gracious, we have more than these to discuss, so let's come back to Covington and find out about the rest. Jimmy Griggs is demonstrating the new popcorn popper at Ben Franklin's. Leslie Ann Harvey is the new manager of Harvey and Daughter Gin.

Annette Poole and Lynn Blalack are making headlines for Covington. Annette is the author of a column entitled "Advice for Girls" which appears daily in all the big newspapers. Lynn is the author of a book called "The Child's Care." Lynn has also been elected the mother of the month. Betty Sue Smith is now managing the Business Woman's Club. Jimmy McDonald has a hillbilly band. They appear at all of the barn dances. Corrinne Currie is the head of the Speech Dept. at U.T. Emily Harvey is still touring Europe; she's flooding the mail with picture post cards. Bobby Hammons is the operator of a fashionable nightclub. Richard Whitehorn just came back from Australia with a boxing kangaroo. Betty Sacks is now the owner of Sacks' on Fifth Avenue. Ann Burlison and Juanell Murphy are employed as private secretaries to prominent lawyers in Memphis. Melissa Carson has taken Mrs. McGowan's place as dietitian in the lunchroom. Nancy Calhoun is now instructor of driving at Byars-Hall. Jimmy Yates is photographer for the New York Times. Shirley Parr is a champion lady wrestler. Mary Louise Ralph is a burlesque queen. Geneva Poole and Mattie Lou Pitts are visiting high schools trying to get new recruits for the WACS.

Compliments of
COBB ELECTRICAL SERVICE
You phone for us
We'll wire for you

Compliments of
TAYLOR and YOE
Mason, Tennessee

WESTERFIELD'S
CASH GROCERY

Compliments of
LOWENHAUPT-HILL HARDWARE CO.
Since 1897
Covington, Tenn.

Drugs
ROPERS
Prescriptions
Where Most People Trade Most

TAYLOR DRUG CO.
Prescription Druggists
Mason, Tenn.

Eat
at
COURTESY CAFE

Eat
SANDWICHES and
DAIRY CASTLE ICE CREAM

Class Prophecy

Martha Jean Massey is a dancing instructor at Arthur Murray's Studio. Nina Yarbrow has a thriving business as a seamstress in Mason.

If you hear a lot of people laughing these days you can be sure Bobby McDivitt and Frank McIntosh are in the crowd. They now have their own T.V. show. Jimmy Burlison is a salesman for the Lucky Strike Company. Julius Beasley, a Memphis architect, is doing quite well now. Shirley Kuykendall and Dorothy Deverell have taken over the management of the Covington Dime Store. Kenneth (TIGER) Akins is the owner of a race track and also a swanky restaurant. Betty McKee has started a new business in town, a delicatessen shop. Margaret Jobe is a successful model at Levy's. Kathryn Wooten is also a model; she models for the Bouncing-Walk Shoe Company. David Ferguson is a foreign correspondent for the "New York Times." Donald Erwin and Jimmy Hopkins are still going to schools—that is, they're photographers for Tooley Myron Studios. Inez Billings is Phys. Ed. director at Byars-Hall; the

boys are really interested in this course now. Virginia Maharrey is the head nurse at the Cat and Dog Hospital of Tipton County. Bill Burnett is the County veterinarian. Joe Hill is the pastor of the First Methodist Church of Pilgerk. Tommy Moose is playing in an orchestra in Chicago.

Mrs. America of 1961 is our own Anne Boyd. Malcolm Smith, one of the most noted beauty judges of our times, was one of the judges. Two of our alumni are trying to make the world a happier place to live in; Dorothy Smith and Wanda Hopkins are managing the Lonely Hearts Club. Abner Davis is the official mayor of Mason. James Faulk, a race car driver, was given a ticket for speeding by highway patrolman Maurice Gwinn. Ann Harvey and Charlene Stallings are the owners of Covington's new Motel. Dan McLennan hunts tigers in Africa between his books. Wayne Selph is a professor at Columbia University. (Einstein just passed away.) We find Ruth Simpson enjoying the role of a perfect housewife.

Compliments of
JACK GUTTMAN
North Side Square

ATKINS FARM SUPPLY
H. L. Atkins
GROCERY — PURINA FOODS
SEED — FERTILIZER

Compliments of
SERVICE CENTER
FARMALL TRACTORS — INTERNATIONAL TRUCKS
Phone 2631 Covington, Tennessee
June Wooten

Meet Me At
COVINGTON DRUG
After School

Congratulations Seniors
W. M. WILLIAMSON & SON
Insurance is Our Business
Mason, Tenn.

Joe Thornton's
ESSO SERVICE CENTER
Personalized Service
PHONE 2716

Compliments of
EBER'S DEPARTMENT STORE

Eat at
CITY CAFE
Phone 864

Jo Ann Smith is employed by the General Electric Company. She demonstrates their many products in all of the Southern States. Camille Kelly is now employed by the Red Cross, she is teaching first aid classes. Mary Avelon Sasser demonstrates new cars for the Ford Motor Company. She also assists the secretary Mary Barron is keeping up with all of her sales.

Joanne Black now has a professional girls' basketball team, the "Tennessee Plow Girls." Rose Ann Veasey is married to a Hollywood star. Yolande Faulk is campaign manager for Charles Strickland, who is running for President. Oh, yes, I forgot to tell you, President of the Athletic Association of Tipton County.

Giles Forbess, a famous comedian of our times, is visiting Franklin Yarbrow at his magnificent cotton plantation on the banks of the mighty Mississippi. Mary Jeane Crigger is busy raising a family. Sometimes her husband keeps her worried by going fishing. Charles Fuller is a new Edgar Allen Poe. He thrills and terrifies his readers every week.

And thus ends the saga of the class of 1953, and we sincerely hope that all graduating classes of Byars-Hall will turn out citizens as useful and successful as these.

Signed by: George Gracey, Joe Naifeh, Wanda Hopkins, Laverne Shankle, George Lackey.

SPOTLESS CLEANERS
We appreciate your patronage
PHONE 534

Phone 2484
SMITH HARDWARE
Hotpoint Appliances Dupont Paints

Compliments of
STEPHENSON FURNITURE COMPANY
Covington, Tennessee
PHONE 517

Fresh Produce and Meat
HARVEY and WHITE
We're on the Square

Compliments of
ELIZABETH'S
Covington's only exclusive dress shop

DAVIS APPLIANCE CO.
Authorized Dealer
Crosley
Home Appliances
For All *We Service Everything We Sell*
LESTER DAVIS
KELLEY DAVIS
"The Crosley Boys"
Covington, Tenn.
Hwy. 51 South



Winners of Class Tournaments
Senior Girls - Senior Boys

Scenes from

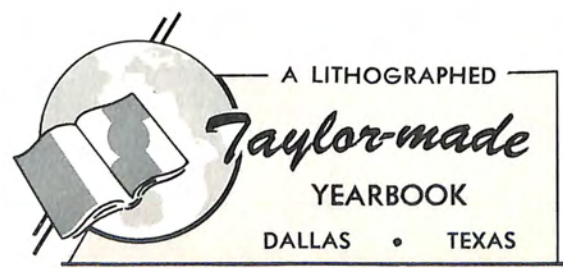
Junior-Senior Banquet →



Scenes from the Senior Class Picnic
↓
Realtroot Lake ↓



88 pages



A LITHOGRAPHED

Taylor-made

YEARBOOK

DALLAS • TEXAS

