



WILDCAT 1954



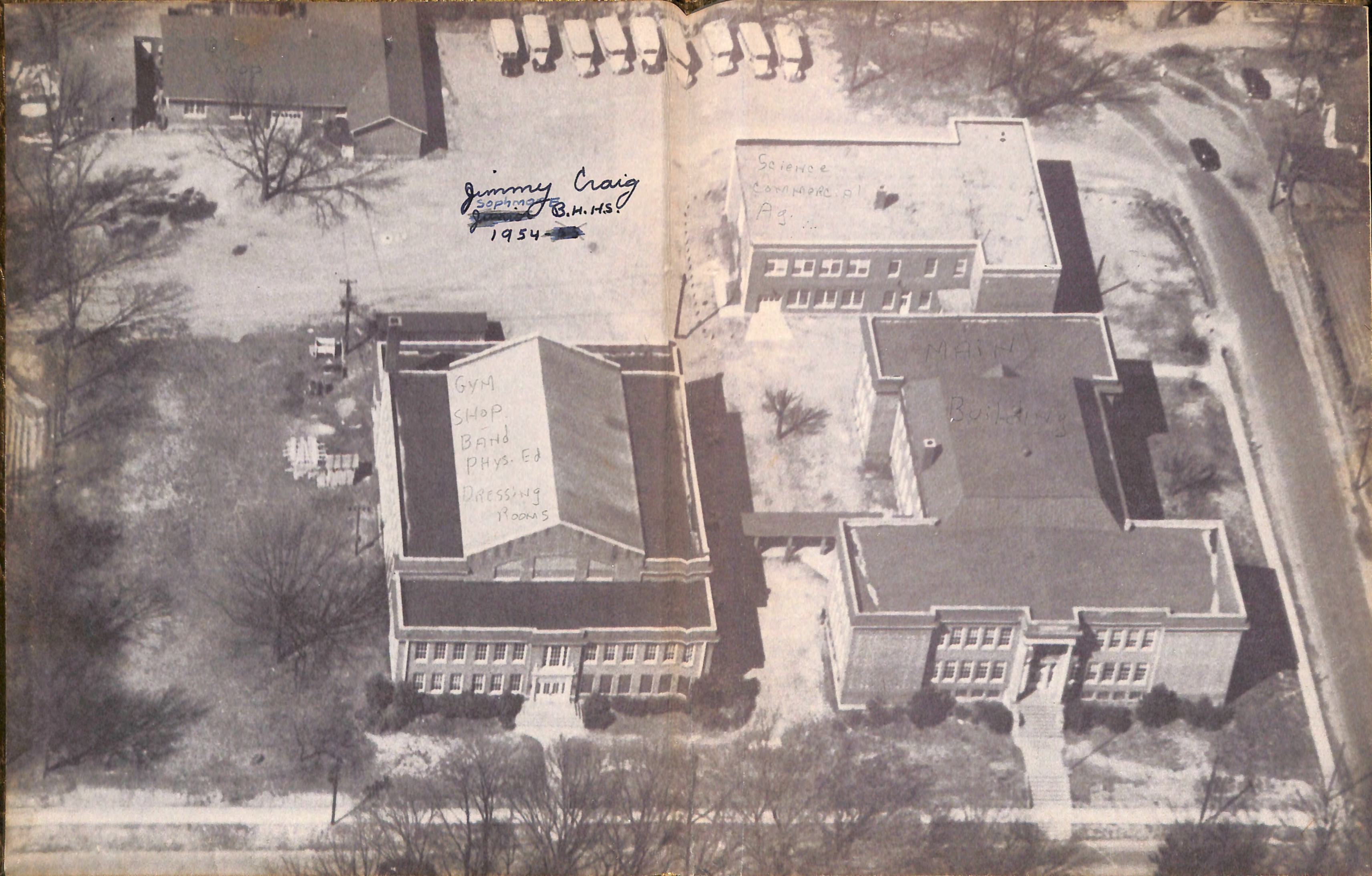
Jimmy Craig  
Sophomore  
B.H.H.S.  
1954

Science  
Commercial  
Ag. ...

MAIN

Building

GYM  
SHOP  
BAND  
PHYS. Ed  
DRESSING  
ROOMS



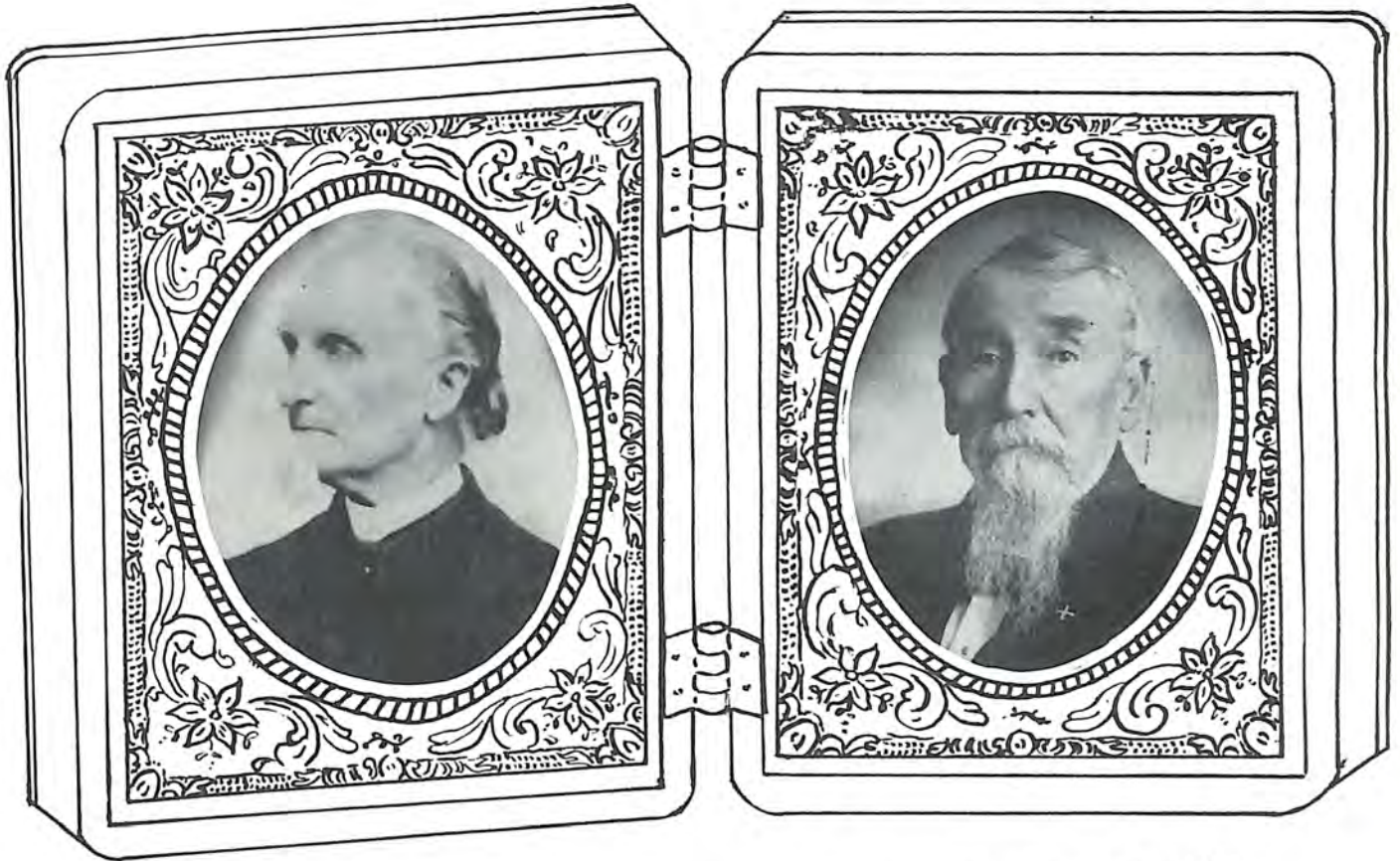


Best of Wishes  
it's nice to be on the  
beachball squad with you.  
your pal.  
Wilbur

Jimmy Craig  
Sophomore BHAS  
1954



# Dedication



JUDGE JAMES BYARS

PROFESSOR JAMES R. HALL

During the latter part of the 1800's, about the turn of the century, a private school for girls, under the direction of Professor James R. Hall, and a private school for boys, under the direction of Judge James Byars, came together in a city-sponsored school at the site of the present Covington Grammar School. This school included ten grades, three of which were high school courses. In 1911 a new building was constructed for high school courses only, on the site of the present high school, and was named Byars-Hall in honor of Judge Byars and Professor Hall. We, the annual Staff, wish to respectfully dedicate this 1954 WILDCAT to the memory of these benevolent and farsighted educators.

*"Lives of great men all remind us  
We can make our lives sublime,  
And departing, leave behind us  
Footprints on the sands of time."*

LONGFELLOW



Editor of 1954 WILDCAT

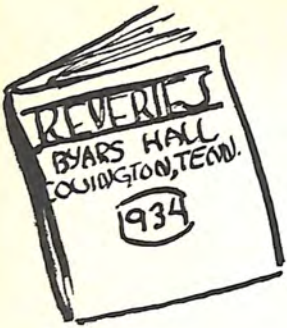
ERNESTINE UNDERHILL

Assistant Editors

KIP SHOAF BOBBY BUTLER

Business Manager

WANDA BEAVER



Sponsor

MRS. HUGHES BRINGLE

BARBARA BARTON

BEVERLY BRINGLE

HARRY BOWDEN

ANNA VANCE COBB

TOM DOWNING

DORIS DAWSON

BILLY FLEMING

ROGERS FISHER

JOAN NADINE FINLEY

BILL HARRIS

CHARLES GRACEY

BOB HASTINGS

BESSIE McDANIEL

BETSY HARVEY

WAYNE ROBBINS

E. P. MARTIN

BILLY J. STAFFORD

JACK MARSHALL

PALMER SMITH

EDITH CLAIRE WALKER

WALTER WHITLEY





# *Administration*



MR. R. K. CASTELLAW  
*Superintendent*



MRS. R. E. SCOTT  
*Secretary*



MR. J. E. SIMONTON  
*Principal*  
Chemistry  
Physics



# *Faculty*





MRS. HUGHES BRINGLE  
English



MISS DORIS BOYD  
Civics  
History



MR. E. M. EVANS  
Mathematics



MR. HORACE COOLEY  
Band  
Mathematics

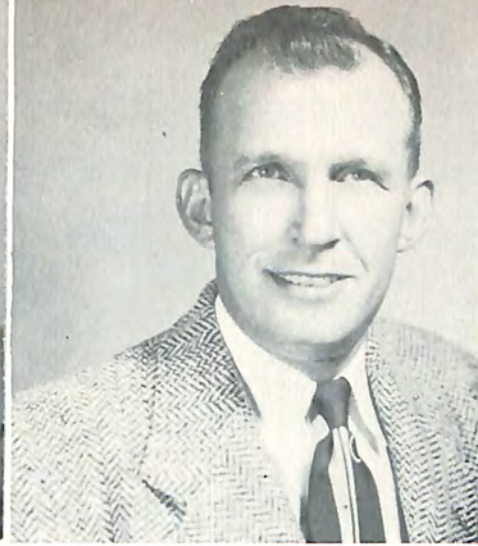
MR. JOHN GULLEY  
Sociology  
Health Education







*Rodney Hughes*



MR. RAYMOND JUDY  
Biology  
Distributive Education



MR. RODNEY HUGHES  
Mathematics



MISS JANE A.  
JOHNSON  
Commercial



MRS. GEORGE MAY  
English

MR. C. E. JOHNSON  
Agriculture



*My very best wishes  
Rebecca May*







MR. RALPH MOFFATT  
Agriculture

MR. JOHN NEESE  
General Science



MRS. CHALMERS PARR  
English

MRS. W. W. PARKINSON  
Latin

MISS FRANCES RAST  
Home Economics







MISS JEWELL SADLER  
Physical Education

MRS. STANLEY SHOAF  
Librarian



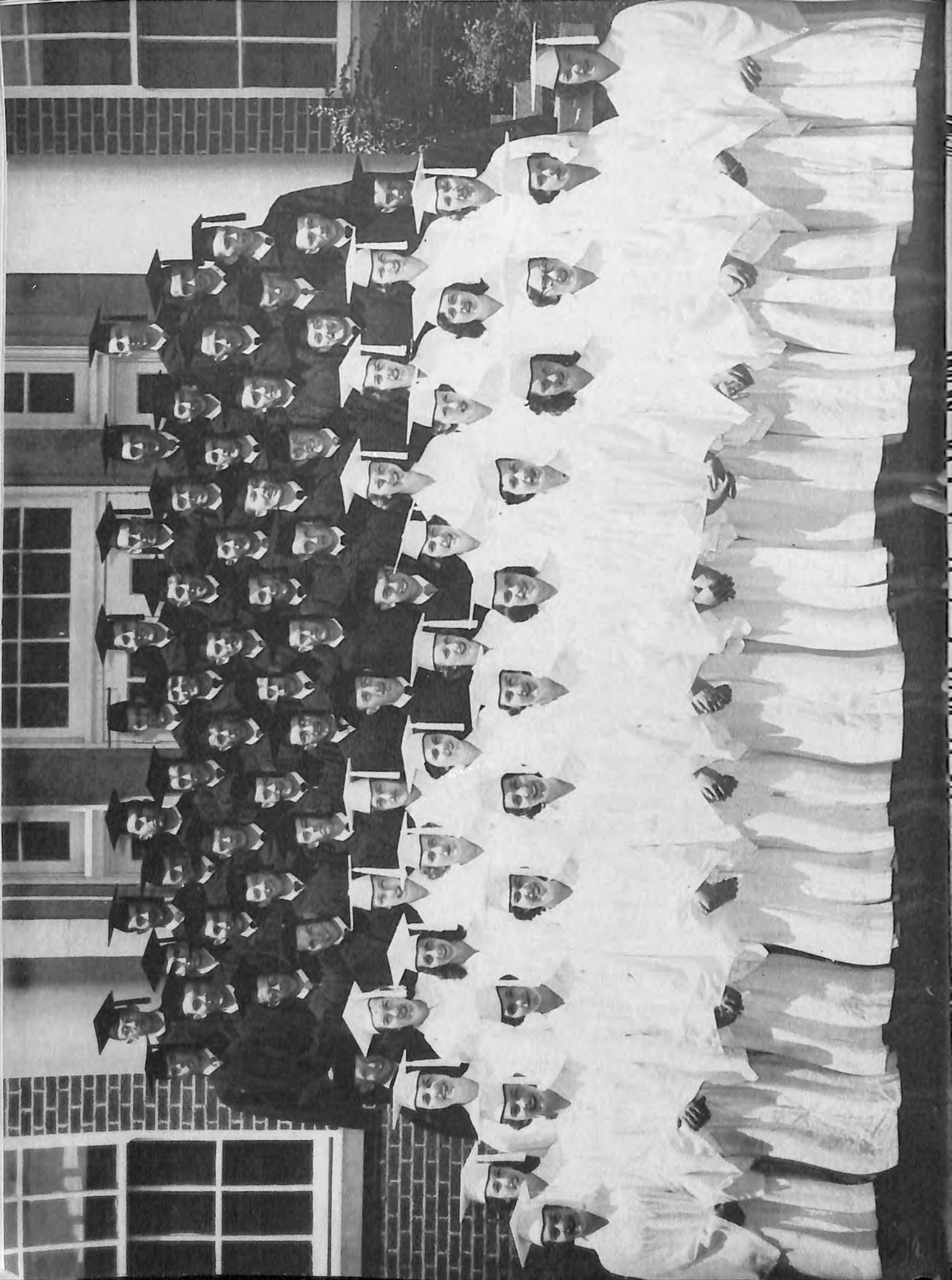
MR. R. E. SCOTT  
Shop  
*R. E. Scott*



Compliments  
of  
COCA-COLA BOTTLING CO.  
Covington  
Tennessee

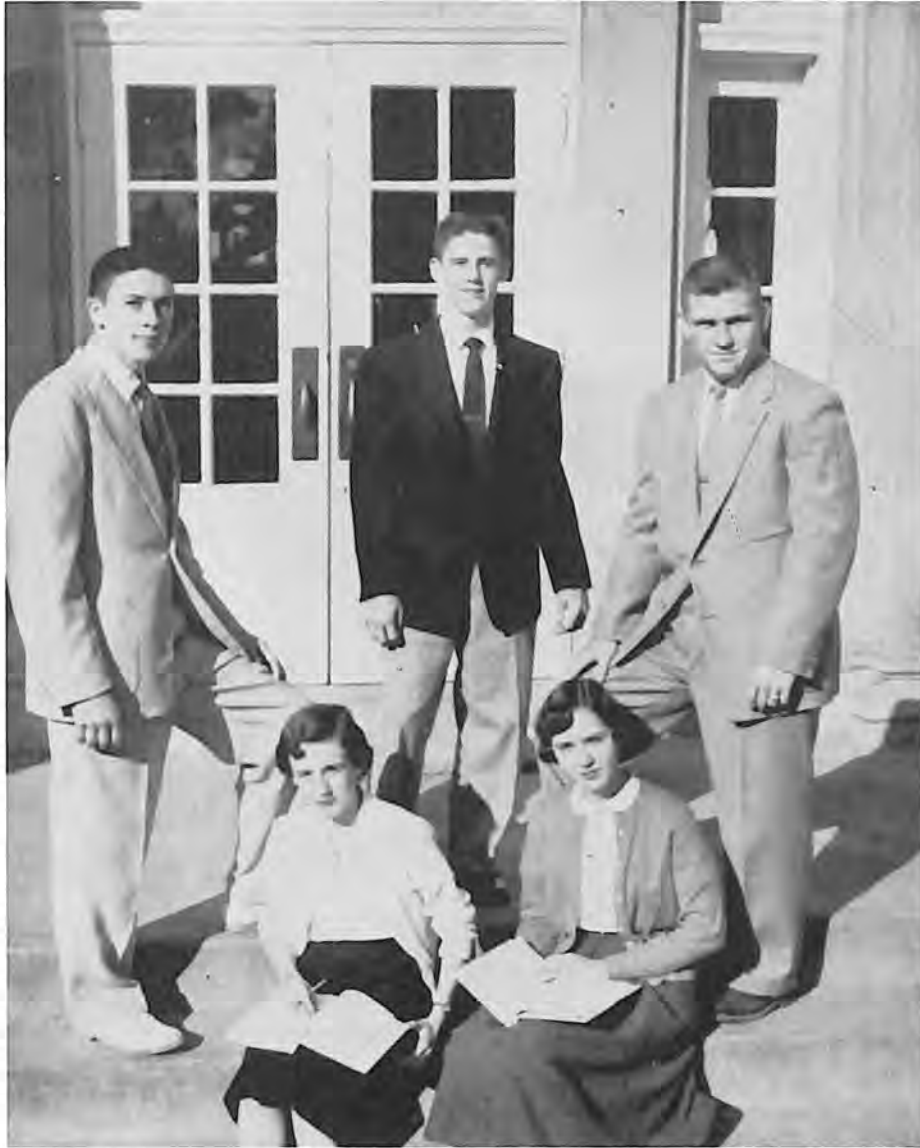








# Senior



President .....	PALMER SMITH
Vice President .....	THOMAS SMITH
Secretary .....	KIP SHOAF
Treasurer .....	BARBARA BARTON
Reporter .....	NEIL RICE





BARBARA BARTON



BOBBY BEATY



WANDA BEAVER



HARRY BOWDEN



FRANCES BRAMMER  
HAZELRIG



RAYMOND BRYANT



VOLRIE JUNE BUSH



G. K. BUTLER



BOBBY BUTLER



L. W. BYRD



BILLY CHUMLEY





PAUL CHUMLEY



MARTHA CLOWES



YVONNE CLOWES



DAVID COMBS



KAY COTHRAN



TOM DOWNING



JIMMY EDENS



ELIZABETH FARMER



JOHN PAUL FARMER



RANNY FARRELL



JOAN NADINE FINLEY





BETTY JANE  
FLEMING



BILLY FLEMING



DALE FLEMING



GEORGE FLOWERS



JOE GARDNER



JUNE GASSON



BETTY GATLIN



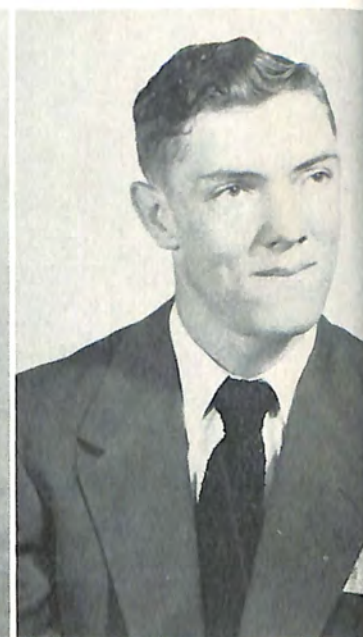
CHARLES GRACEY



ROBERT GRANT



MARY JANE GREEN



WAYNE HARTLEY





JERE HILL



GEORGIA HOWARD



MILDRED HUDSON



DEAN HUSKEY



BETTY KELLEY



BARRY LEACH



HAROLD MATHIS



BESSIE MARIE  
MCDANIEL



ANN McDONALD



LAURA ANN MCGOWAN



MYRNA MCINTOSH

*God lucky keep  
that football rolling  
Laura Ann*





WAYNE R. RALPH



NEIL RICE



WARNER RICHARDSON



WAYNE ROBBINS



EDWARD ROBERTS



WILLIAM ROGERS



PAULA KEITH SCOTT



DOROTHY SCROGGINS



ROBERT SELPH



JORDAN SHERROD



KATHERINE SHOAF





JACK SIMONTON



DONALD SMITH



PALMER SMITH



THOMAS SMITH



ROBERT LOUIS SORRELL



BILLY JACK STAFFORD



EVERETT RAY STAFFORD



CHARLES STEPHENSON



WAYNE STILES



MARY NELL THOMAS



CHARLES MILTON THORNTON





JERRY THORNTON



ERNESTINE UNDERHILL



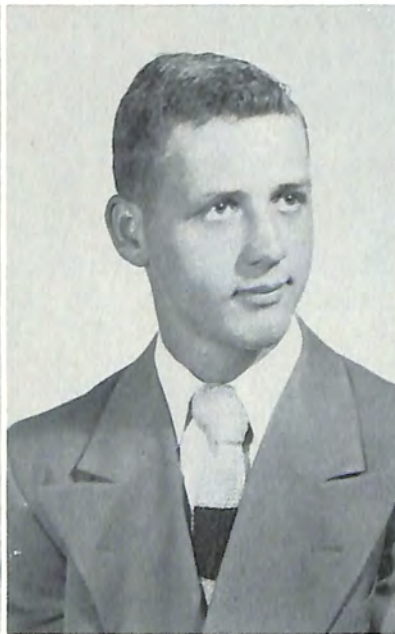
RICHARD UTLEY



BILL VASSEY



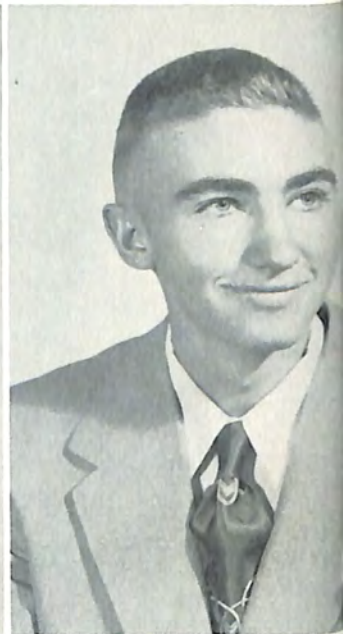
STANLEY WAGES



HUGH LEE WAITS



MAZIE WARMATH



RAYMOND WEIR



JULIAN WILLIAMSON



STELLA WILSON



WILMA WYLIE



ANNETTE YARBRO



# Senior Personalities



BARBARA BARTON—"WOODY"

*"Woody Woodpecker"*

FHA 1, 2, 3, 4, Local Treasurer 3, Sub-District Treasurer 3; FHA State Degree 3; Commercial 3; Library 4, Secretary-Treasurer 4; Class Treasurer 4; Football Queen 4; Annual Staff 4; May Day Court 4; Senior Play.

BOBBY BEATY

*"Shiek of Araby"*

Band 1, 2; Commercial Club 4; Glee Club 1, 2; Dramatic Club 4; May Day Court 4.



HARRY BOWDEN—"KILLER"

*"I'm Just Wild About Harry"*

Band 1, 2, 3; Annual Staff 4; Cartoonist for Purple and Gold 4; Commercial 4; Dramatic Club 4.

VOLRIE JUNE BUSH—"VEE"

*"Baby Face"*

Beta Club 3, 4; Basketball 3; Glee Club 2, 3; Commercial Club 3, 4; FHA 1, 2, 3; Dramatic Club 4.



WANDA BEAVER

*"Hi, Neighbor"*

FHA 1, 2, 3, 4, Vice President 3; Parliamentarian 4, Delegate to State Camp 2; FHA State Degree 3; Commercial 3; Secretary 3; Latin 4; Glee 1, 2, 3; Cheerleader 2, 3, 4; Annual Staff 3, 4; Basketball 1, 2, 3; Representative Strawberry Festival 2; Who's Who, Friendliest Girl 2, 3, 4; DAR, Best Girl Citizen 4; Teen Timers 1, 2, 3; Senior Play.

G. K. BUTLER

*"Stouthearted Men"*

FFA 1; Commercial Club 3; Senior Play.



L. W. BYRD

*"Where Do We Go From Here"*

FFA 1, 2, 3, 4, Top Crop Banquet, Dairy Judging, Parliamentary Procedure, Skills Contest; Math Club 2.

BILLY CHUMLEY

*"You Oughta Be In Pictures"*

FFA 1, 2, 3; Commercial Club 3.







RAYMOND BRYANT

*"No Help Wanted"*

Class President 2; FFA 1, 2, 3, 4; FFA Reporter 3; Beta Club 3, 4, Vice President 4; Boys' State 3; FFA Skills Contest 3, 4; FFA Parliamentary Team 3, 4; Purple and Gold Staff 3, 4; Co-Editor Purple and Gold 4; Math Club 2; Senior Play; Who's Who; State Farmer.



PAUL CHUMLEY—"HORSE"

*"Mule Train"*

FFA 1, 2, 3, 4; Math Club 2; Skill Team 3, 4; Seed Team 1; Parliamentary Procedure 4; State Farmer.



BOBBY BUTLER

*"Ya'll Come"*

Football 2, 3, 4; "C" Club 3, 4; Beta Club 3, 4; Beta Club President 4; Latin Club 2; Band 2, 3, 4; Purple and Gold 2, 3; Class Reporter 1; Annual Staff 4; Who's Who 4.



MARTHA CLOWES

*"I'm Waiting For You"*

DE Club 4; Band Club 2; FHA 1; Commercial Club 3.



KAY COTHRAN

*"Beautiful Brown Eyes"*

Band 1, 2, 3, 4; FHA 1-3; Commercial Club 3, 4; Commercial Club President 4; Band Reporter 4; Glee Club 1, 2; Representative of May Day 4.



DAVID COMBS—"DAVE"

*"I Like Mountain Music"*

FFA 1, 2, 3; Band 2, 3, 4.



TOM DOWNING

*"I'm Nobody's Sweetheart Now"*

Latin Club 2; "C" Club 3, 4; FFA 3, 4; Football 1, 2, 3, 4; Skills Team in Agriculture 3, 4; Public Speaking in FFA; Commercial Club 3; Math Club 2; Senior Play.



JIMMY EDENS

*"Whistle While You Work"*

Band Club 1, 2, 3, 4; Dramatic Club 1-4; DE Club; Football 1; Baseball 1.



ELIZABETH FARMER—"LIZ"

*"Little Liza Jane"*

Commercial Club 3, 4; FHA 1, 2; Basketball 1, 2, 3; Math 2.



JOHN PAUL FARMER—"J. P."

*"I'll Get By"*

Band 1, 2, 3; DE Club.





**RANNY FARRELL—"RANAL LEE"**

*"I Get Ideas"*

Band 1, 2, 3, 4; FFA 1; Commercial Club 3, 4; Glee Club 3.

**JOAN NADINE FINLEY—"KID"**

*"Till We Two Are One"*

Latin Club 3; Commercial Club 3, 4; Annual Staff 4.



**BETTY FLEMING**

*"Betty Coed"*

Latin Club 2, 3; FHA 1, 2, 3; Basketball 1, 2, 3; Commercial Club 4.

**BILLY FLEMING—"BILL"**

*"Changing Partners"*

Band 3, 4, President 4; FFA 1; Latin 2; Annual Staff 3, 4.



**JOE GARDNER—"BIGUN"**

*"Tea For Two"*

"C" Club 2, 3, 4; Basketball 2, 3, 4; Football 2, 3, 4; Commercial Club 4; Reporter of Junior Class; Who's Who, Most Athletic, Best All Around 4.

**GEORGE FLOWERS—"BUCKY"**

*"I Ain't Gonna Take It Sitting Down"*

Football Manager 4; FFA 1, 2, 3, 4, State Farmer 3, 4; "C" Club 4; Teen Timers 1, 2, 3; Dramatic Club 4.



**JUNE GASSON**

*"Oh, You Beautiful Doll"*

FHA 1, 2, Secretary 1; Freshman Candidate for Homecoming Queen; Freshman Candidate for FFA Sweetheart; Freshman Secretary; Sophomore Treasurer; May Day Court 2, 3; Teen Timers 2; Commercial Club 3, 4; Band 1, 2, 3, 4; Candidate for Band Queen 3; Band Queen 4; Who's Who 3, 4; Band Treasurer 3; Band Secretary 4; Commercial Vice President 4; Senior Play.

**ROBERT GRANT—"RED"**

*"That's What I Like About the South"*

FFA 2, 3, 4, State Farmer.



**BETTY GATLIN**

*"I Ain't Misbehaving"*

May Day Court 2; Candidate for Homecoming Queen 4; Treasurer of Class 3; Latin Club 3; Commercial Club 3, 4, Treasurer 4; Basketball 1, 2, 3; FHA 1; Purple and Gold Staff 4; Beta Club 3, 4; Senior Play.

**CHARLES GRACEY—"SPIVEY"**

*"There's A Long, Long Trail A-Winding"*

Latin Club 2; Math Club 2; Basketball 1, 2; Dramatic Club 4; Annual Staff 3, 4; Teen Timers 1, 2, 3; Senior Play.







MARY JANE GREEN—"JANIE"

"Sophisticated Lady"

FHA 1, 2; Delegate to FHA Convention 2; Latin Club 2; Teen Timers 1, 2; Glee Club 2; Commercial Club 3, 4; Who's Who, Best Dressed 3, 4; Library 4; Dramatic Club 4.

WAYNE HARTLEY—"HORSIE"

"For Me and My Gal"

Purple and Gold 3, 4; "C" Club 3, 4; Commercial Club 3 Baseball 1, 2, 3, 4; Basketball 1, 2, 3, 4, Letter 3, 4.



JERE HILL—"COOP"

"Don't Fence Me In"

Football, Lettered 2, 3, 4; Baseball, Lettered 1, 2, 3, 4; Vice President Sophomore Class; President Junior Class; Secretary Latin Club 2; "C" Club 1, 2, 3, 4, Sergeant-at-Arms 3, Vice President 4; Beta Club 3, 4; Purple and Gold 4; Math Club 2; American Legion Baseball 1, 2, 3; Mr. Byars-Hall 4; Who's Who 4.



FRANCES BRAMMER HAZELIG—"NOOKIE"

"Always"

FHA 1, 2; Band 2; Basketball 1; Commercial Club 3, 4; G Club 1, 2, 3; Library Club 3, 4.



GEORGIE HOWARD—"PEACHIE"

"Sweet Georgia Howard"

FHA 1, 2, 3; Commercial Club 3, 4; Basketball 1; Band 1.

MILDRED HUDSON

"Some Enchanted Evening"

FHA 2.



DEAN HUSKY—"HUCK"

"Stranger in Paradise"

Basketball 1, 2, 3, 4; Baseball 1, 2, 3; Class President 1-3; 4-H Club 1, 2, 3, 4, President 2-4; FFA 1, 2, 3, 4; Monogram 1, 2, 3, 4; Eagle Staff 3, 4; Student Council 3, 4; Glee Club 2, 3, 4; Bus Driver 3, 4; Annual Staff 4; "C" Club 4; Commercial Club 3, 4.

BARRY LEACH

"Dream"

FFA 1, 2, 3, 4; Band 3, 4.



BETTY KELLEY

"Lady, Be Good"

Candidate for Band Queen 1; President of Red Cross 1; Commercial Club 3, 4; Commercial Club Secretary 4; Rep. of May Court 3; Senior Play; FHA 2.

HAROLD MATHIS

"Who"

FFA 1, 2; DE 4.







**LAURA ANN MCGOWAN—"LAURA BELL"**

*"Ma, He's Making Eyes At Me"*

Basketball 1; FHA 1, 2, 3; FHA President 1; FHA Camp 1; Purple and Gold Staff 2, 3, 4; Lettered 2, 3, 4; Latin Club 2; Commercial Club 3; Teen Timers 1, 2, 3; Math Club 2; Glee Club 1, 2.



**BESSIE MARIE MCDANIEL**

*"She'll Be Coming Round The Mountain"*

FHA 1, 2, 3, 4; Commercial Club 3, 4; Annual Staff 4; Teen Timers 1, 2, 3.



**NEIL RICE—"SQUIRT"**

*"Walking My Baby Back Home"*

Vice President of Junior Class; Reporter of Senior Class; FFA 1, 2.



**WAYNE RALPH—"BOOGER"**

*"Plain Ole Country Boy"*

FFA 1, 2, 3, 4, Top Crop Banquet 4, Farm Skills, Parliamentary Procedure; Clubs: Commercial, Dramatic.



**ANN McDONALD**

*"Sweet and Lovely"*

FHA 1, 2, 3, 4; FHA Treasurer 4; Class Secretary 3; Candidate for FFA Queen 3; Commercial Club 3, 4; Basketball 1, 2, 3; Purple and Gold Staff 4; Delegate to FHA Convention 1.



**MYRNA McINTOSH**

*"Five Foot Two"*

FHA 1; Commercial Club 3, 4.



**WAYNE ROBBINS—"DICK"**

*"Take Me Out To The Ballgame"*

DE Club 4; Math Club 2; Baseball 1, 2, 3, 4; Basketball 1, 2, 3, 4; Football 1, 2, 3, 4; "C" Club 1, 2, 3, 4; Commercial Club 3; Annual Staff 4; Lettered Baseball 1, 2, 3, 4; Lettered Basketball 3; American Legion Baseball 1, 2, 3; National Poetry Anthology 3.



**WARNER RICHARDSON**

*"Heart and Soul"*

FFA Club 1; Purple and Gold Staff 4; Commercial Club 3.



**WILLIAM ROGERS—"BUDDY"**

*"Washington and Lee Swing"*

Freshman Squad 1; Varsity Squad 2, 3, 4, Captain 4; Dramatics 1; "C" Club 2, 3, 4.



**EDWARD ROBERTS—"TOM"**

*"It's Three O'clock in the Morning"*

DE Club 4; FFA 1.





**DONALD SMITH—"DON"**

*"Faraway Places"*

Football 1-3-4; Baseball 1, 2, 3, 4; American Legion 1, 2, 3, 4; Student Council 2; Class Secretary and Treasurer 2; Clubs: Photography 2; Spanish 2, 3; "C" 4; CBH 2; FFA 4; Commercial 3; Band 1; Typhoon Staff.

**ROBERT SELPH—"LUMP"**

*"Glow Worm"*

FFA 1, 2, 3; Commercial Club 3



**PAULA KEITH SCOTT—"SQUATLOW"**

*"Doll Dance"*

Junior Varsity Cheerleader 1; Purple and Gold Staff 4; Letter 4; Band 1, 2, 3, 4, Letter 1, 2, 3, 4; Majorette 1, 2, 3; Drum Major 4; Teen Timers 1, 2, 3; Senior Play; Clubs: Latin 2; Commercial 3, 4; FHA 1, 2, 3, Secretary 3; Glee Club 1, 2, 3; Math Club.

**DOROTHY SCROGGINS—"DOT"**

*"Ain't She Sweet"*

FHA Club 1, 2; Commercial Club 3, 4.



**PALMER SMITH—"SNAKE"**

*"Man I Love"*

Basketball 1, 2, 3, 4, Lettered 3, 4; Football 3, 4; Lettered 3, 4; President Senior Class; Annual Staff 4; Clubs: Band 1, 2; "C" Club.

**THOMAS SMITH—"RED DOG"**

*"Wanted"*

Football 1, 2, 3, 4, Lettered 3, 4; Knoxville 1, 2, 3; Agriculture 1, 2, 3; "B" Team Basketball 3, Class Team 1, 2, 3; "C" Club Reporter 4; DE Parliamentarian 4; Vice President Senior Class; Football Co-Captain 4.



**KATHERINE SHOAF—"KIP"**

*"Slow Poke"*

FHA 1, 2, 3, 4, Historian 2, President 4, Delegate to State Camp 1, State Convention 1, 2; Cheerleader 2, 3, 4; Representative Carnival Queen 2; Winner West Tennessee Latin Tournament 3, Third Place 4; Purple and Gold Staff 2, 3, 4; Assistant Editor Annual 4; Basketball 1, 2; Candidate for FFA Queen 4; May Day Queen 4; Who's Who 4; Teen Timers 1, 2, 3; Clubs: Latin 2, 3, 4, Reporter 4; Beta 3, 4, Secretary 3, 4; Library 3, 4; Math 4, Secretary 4; Commercial; Senior Play.

**MARY NELL THOMAS—"NELL"**

*"Mary Is A Grand Old Name"*

FHA Club 1; Commercial Club 3, 4.



**ROBERT LOUIS SORRELL**

*"Crazy Man Crazy"*

Basketball 4, Lettered 4; Secretary Freshman Class; Teen Timers 1, 2, 3; Varsity Band 1, 2, 3, 4; Vice President Band 3, 4; Senior Play; Clubs: Beta 3, 4; Latin 3; Glee 2, 3; Math Club 2; "C" Club 4.

**JORDAN SHERROD—"SONNY"**

*"So Long, It's Been Good To Know You"*

Commercial Club 2, 3; Civics Club 1.







**BILLY JACK STAFFORD—"B. J."**

*"My Hero"*

Freshman Class President; Baseball 1, 2, 3, 4, Lettered 1, 2, 3, 4; American Legion 1, 2; Football 1, 2, 3, 4, Lettered 2, 3, 4; Basketball 1, 2, 3, Lettered 3; Annual Staff; May Day Court 2, 3; Captain Junior Varsity; Clubs: Latin 2; "C" Club 1, 2, 3, 4; Math 2.

**EVERETT STAFFORD—"EVER READY"**

*"Feuding, Fighting, and Fussing"*

DE Club 4, President 4; Football 2, 3; Purple and Gold Staff 2, 3; Latin Club 2.



**CHARLES STEPHENSON—"CLIPPER"**

*"Charlie, My Boy"*

Purple and Gold Staff 2, 3, 4, Co-Editor 4; Football Manager 3, 4; Teen Timers 1, 2, 3; Senior Play; Clubs: "C" 3, 4; Latin 2; Commercial 3; Math 2.

**WAYNE STILES**

*"Smoke Gets In Your Eyes"*

Member of the 1954 Skills Team, FFA 1, 2, 3, 4.



**ERNESTINE UNDERHILL—"TEENIE"**

*"You'll Never Know"*

Basketball 1, 2, 3, Lettered 2, 3; May Court 1; Cheerleader 4; Annual Staff 1-4; Editor Annual 4; Purple and Gold 2, 3; Teen Timers 1, 2, 3; Miss Byars-Hall 4; Who's Who 4; Senior Play; Clubs: Latin 2, 3, 4, President 4; Commercial 3; Beta 3, 4, Reporter 4; Library 4; Math 2; FHA 1, 2, 3, 4, Vice President 1, President 2, State Degree 3; FHA Camp 1.

**MAZIE WARMATH**

*"School Days"*

Purple and Gold Staff 4; Clubs: FHA 1, 2, 3; Commercial 3, 4; Library 4; Beta 3, 4, Reporter 3.



**MILTON THORNTON—"GOOSE"**

*"Goofus"*

Basketball 3, 4; Clubs: Commercial 3; DE 4; "C" 3.

**JERRY THORNTON—"SQUEEKEY"**

*"Hot Car Races"*

DE Club 4.



**RICHARD UTLEY—"U. T."**

*"Touchdown U.S.A."*

Football 1, 2, 3, 4, Lettered 2, 3, 4; Baseball 1, 2, 3, 4, Lettered 2, 3, 4; American Legion 1, 2; Reporter Sophomore Class; Basketball 2; Clubs: "C" 2, 3, 4, Sergeant-at-Arms 4; DE 4.

**STANLEY WAGES—"STAN"**

*"Nobody Knows The Trouble I've Seen"*

Clubs: Commercial 3; FFA 1; Math 2; DE 4; DE Club Reporter 4.







WILLIAM VASSEY—"BILL"

"Can Anyone Explain"

Science Club 1, 2; Dramatics 2, 3; Forensics 3; Key 3, 4; Beta 4; Manager Football Team 1; Thespian Society 3; Forensics League Accepted 4; Humor Editor Newspaper; Senior Play.

RAYMOND WEIR

"Cold, Cold Heart"

DE Club 4.



HUGH LEE WAITS

"For He's A Jolly Good Fellow"

FFA 1, 2, 3; Commercial Club 1; Basketball 2, 3; Who's Who 4.

JULIAN WILLIAMSON—"CHICK"

"I'm An Old Cowhand"

FFA 1, 2, 3, 4, Chapter Farmer 2, Star Chapter Farmer 3, Star Farmer 3, Delegate at Peabody, Top Crop Banquet, Supervise Farming Pro-Judging Contest 1, Parliamentary Procedure Treasurer 3, President and Chairman 4, Skills Team 3, 4, Livestock Judging 2, 3, 4, Placed Second High in West Tennessee on Individual Points 4; Public Speaking 4.



WILMA WYLIE—"MOLLIE"

"Just My Bill"

Basketball 1, 2, 3, 4, Letter 3, 4; Beta 3, 4; Commercial 3, 4; Latin 3, 4; Vice President Library 3, 4, President 4; Purple and Gold Staff 3, 4; Secretary Sophomore Class; Girls' State Rep.

ESTELLA WILSON—"EARS"

"Scatterbrain"

FHA 1, 2, 3, 4; Glee 1, 2; Latin 4; Commercial 3; Teen Timers 1, 2; Band Majorette 3, 4; FFA District Queen, State Degree 3, Rep. State Convention 3; FHA Song Leader 4; Math



ANNETTE YARBRO

"I Don't Care If The Sun Don't Shine"

FHA 1, 2; Commercial Club 3, 4.

JACK SIMONTON

"Long Gone"

Band 1-2-4; Latin Club 1, 2; President of Slide Rule Club.



Compliments

of

GEO. D. GRACEY





Scenes from  
SENIOR PICNIC  
JULIAN WILLIAMSON'S BARBECUE

HYDE PARK MILLS, INC.  
Covington, Tennessee

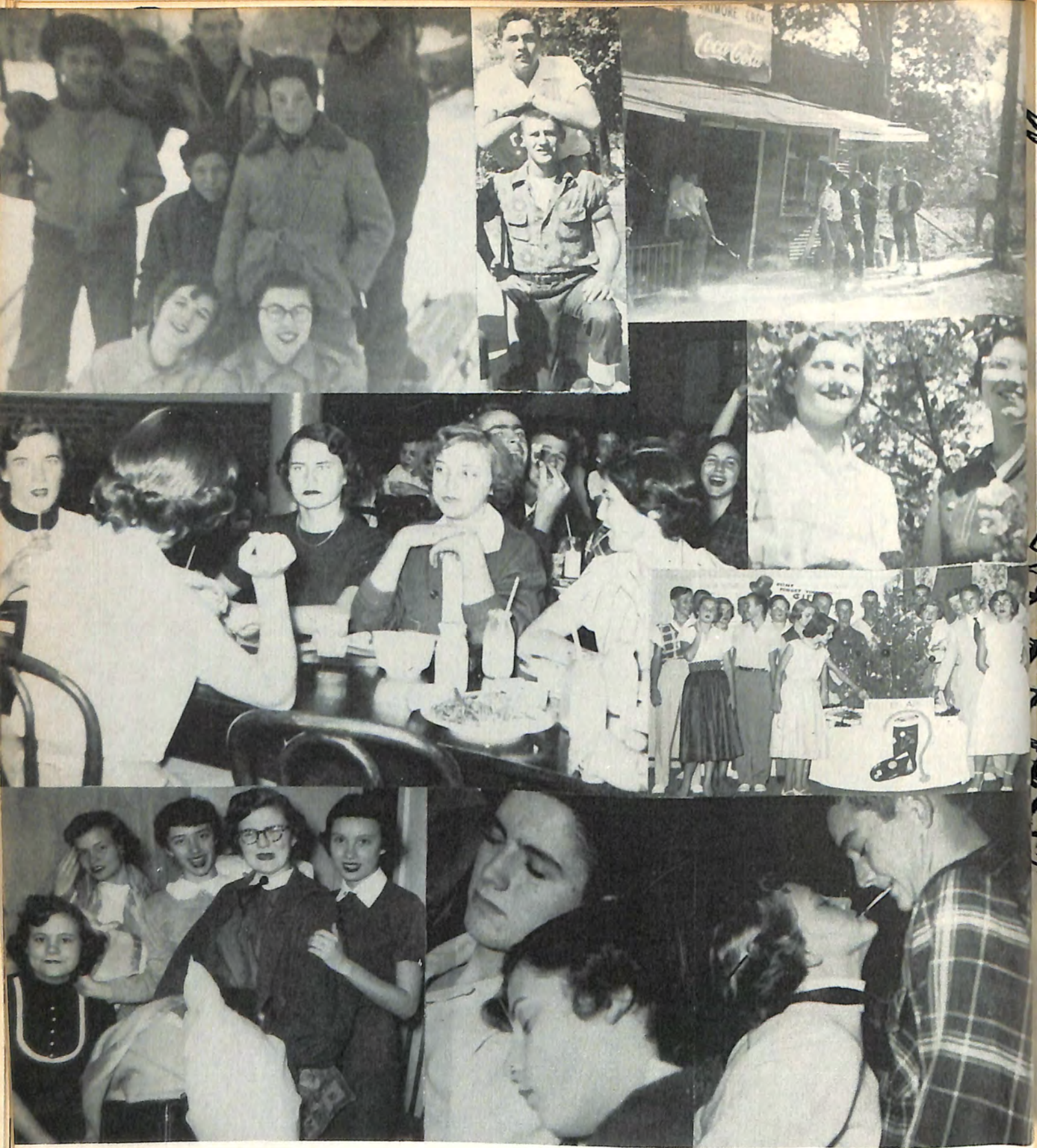
Extends  
SINCERE  
CONGRATULATIONS  
and  
CONTINUED  
SUCCESS



to the 1954  
graduates of  
BYARS-HALL  
HIGH SCHOOL

Four seniors visit Hyde Park.





We Are Celebrating Our Fiftieth Anniversary

1903 to 1953

*Fifty Years of Friendly Service*

BANK OF MASON

Mason, Tennessee



# Junior 5



President .....	KAY MOORE FRIZZELL
Vice President .....	WILBUR HOWARD
Secretary .....	DAN JENNINGS
Treasurer .....	JOHN MARSHALL
Reporter .....	BETTY McCLAIN





Billy  
Adkerson



Louis  
Atkins



Jo Rivers  
Baxter



Kenneth  
Bennett



Irma  
Billings



Bobbie  
Bowles



Martha Sue  
Bringle



Douglas  
Bryan



Cabe  
Burlison



Malcolm  
Burlison



Bobby  
Byrd



Mamie  
Byrd



Helen  
Campbell



Betty Jo  
Cook



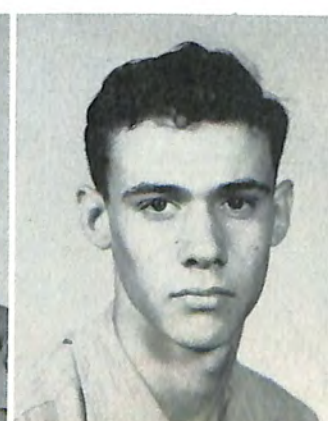
Bernale  
Cooksey



Danny  
Cranford



Amy  
Daniel



Louis  
Daniel



Larry  
Daugherty





Doris Dawson



Amy Deverell



Betty Deverell



Dolores Dunn



June Dunn



Jane Durham



Margaret Durham



Mack Easley



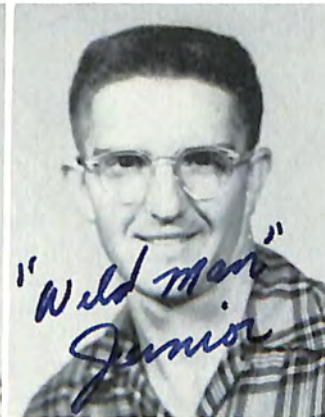
Rodney Eubanks



Betty Faught



Earl Faulk



Robbie Fincher



Floyd Fleming



Jean Fleming



Barbara Flowers



Betty Foust



Marie Fowler



Kay Moore Frizzell





Virginia Fryer



Robert Fuller



Jean Gasson



Marilyn Gilbreath



Shirley Gordon



Margie Hadley



J. D. Hall



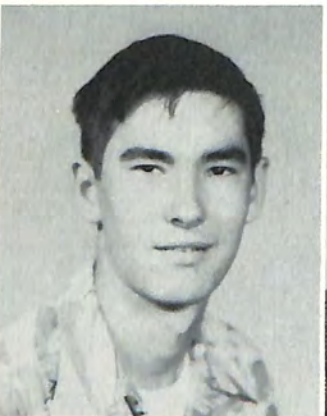
Bill Harris



Lynn Hartley



Betsy Harvey



Billy Hazelrig



Johnny Howard



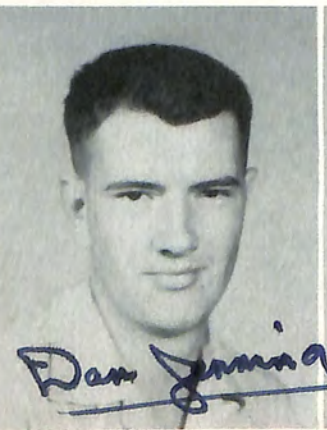
Welton Howard



Wilbur Howard



Ida Huggins



Dan Jennings



Doris Jobe



Morris Jobe



Tommy Johnson





Ruby  
Jones



Sandra  
Jones



Bernice  
Lackey



Betty  
McClain



Peggy  
McDivitt



William  
Maharrey



Dorothy  
Maloy



John  
Marshall



Robert  
Marshall



E. P.  
Martin



Carolyn  
Max



Ronald  
Miller



Betty  
Murphy



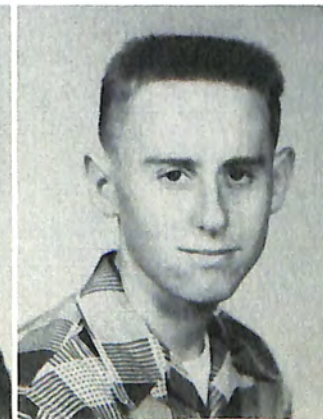
Roy  
Parimore



Dorothy  
Parker



Mary Elizabeth  
Patrick



R. H.  
Poole



Bettie  
Rice



Roby  
Roach





Betty Lou  
Roberts



Dennis  
Robbins



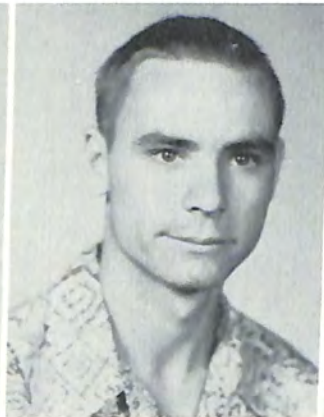
Tim  
Sloan



Patsy  
Smith



Jimmy  
Sorrell



Bob  
Stafford



Billy  
Trantham



Frances  
Troser



Carl  
Turner



Mary Janet  
Turner



Richard  
Veazey



Edith Claire  
Walker



Nancy  
Walton



Reba  
Warren



Doris  
White



Helen  
Whitehorn



Barbara  
Williams



Robert  
Wright



Bob  
Yoakum



# Sophomore S



President ..... BILL YOUNG  
Vice President ..... JIMMY BEASLEY  
Treasurer ..... SIDNEY TURNER  
Secretary ..... JACK SANFORD  
Reporter ..... SARA WHITEHORN





Harold  
Ammons



Carolyn  
Anderson



Edsel  
Anderson



Patricia  
Baker



Laura  
Barron



Bobby  
Baskins



Kim  
Baxter



Gaylon  
Beasley



Jimmy  
Beasley



Jo Ann  
Bishop



Leroy  
Boyd



Shirley  
Bradshaw



Jimmy  
Bradshaw



Keefer  
Bradshaw



Betty Jo  
Bringle



Beverly  
Bringle



Wanda  
Bringle



Gardner  
Brooksbank



Marsy  
Brown



Monteen  
Bull



Janice  
Burgess



Jick  
Burk



Jo  
Burlison



Carolyn  
Carter



Anna Vance  
Cobb





Larry  
Combs.



John W.  
Cook



Morris  
Cothran



Hazel  
Cox



Jimmy  
Craig



Janie  
Daniels

*Best wishes to a great  
boy. One who I have  
known for a long time  
& I shall remember  
forever. Richard*



Marcia  
Daniels



Richard  
Daniels



Haskin  
Davis



Shirley  
Dawson



Everett  
Deen



William  
Earwood



Paul  
Erwin



Warner  
Erwin



Ezell  
Ferrell



Richard  
Fisher



Wilda  
Forbess



Jo Ann  
Gasson



Billy  
Gilbreath



Beverly  
Grugett



Alma  
Hall



Floyd  
Harris



Emmett  
Hartsfield



Bob  
Hastings



Walter  
Hayes





Billy Hise



Martha Jo Hopkins



Susan Johnson



Gwyn Kelley



Charles Keltner



Myrna Lavelle



Earl Lents



Jimmy Martin



Hildred Massengill



Joe Massey



Wayne Max



Maizie Mashburn



Maxine McBride



Jimmy McCall



Jeanette McDaniel



Drew McFarland III



Ann McIntosh



Donald Mills



Janie Mize



Joyce Nason



Nat Newman



Billie Overton



Peggy Overton



Joann Owen



Richard Owen

Dear Jimmy,  
 It's been great knowing you, going to school with you, and especially working with you in N.Y.C. Every time there is anything to do, they know they can depend on Jimmy and Maxine to do it. May you have success in all you undertake.

Maxine  
 McBride

Earl Lents

Drew



*Jim (MEXICO 105) Reeves*



Jimmy Patrick



Patsy Patterson



Mary E. Peeler



Betty Lou Pennington



Royce Petty



Kaye Pinner



Joe Poole



Jimmy Reeves



John Rhodes



Dewey Rice



Rosemary Roberts



Virginia Roberts



Philbor Rogers



James Rose



Lejune Ruff



Lucy Rushing



Jack Sanford



Eugene Scudder



Marilyn Selph



John Shoaf



Nelson Shoaf



Alice Short



Rayburn Sims



Diane Slover



Dan Smith

*John Shoaf*





Gail  
Smith



Kenneth  
Smith



Lillian  
Smith



Jeannette  
Springer



Bobby  
Stiles



William  
Stiles



Betty  
Strickland



Stanley  
Taylor



Monte  
Temple



Idanna  
Thurmond



Smitty  
Townsend



Albert  
Turner



Annie  
Vanstory



Jan  
Vaughn



Nancy  
Wages



Janice  
Walk



Marshall  
Walk



Kenneth  
Warren



Mary J.  
Watkins



Doris  
Webb



Lewis  
Webb



Sara  
Whitehorn



Betty  
Williams



Jimmy  
Williams



Jerry  
Wilson



Kay  
Wooten



Betty  
Yoakum



Bill  
Young



# Freshmen



President ..... RICHARD YARBRO  
Vice President ..... DAVID SLOVER  
Treasurer ..... STERLING RUFFIN  
Secretary ..... THETA KELLY  
Reporter ..... ROBBIE LOU JOHNSON





M. Abernathy



M. Baskins



R. Atkins



J. Armstrong



L. Anderson



I. Alexander



B. Bradshaw



T. Bragg



C. Boswell



E. Billings



W. Beasley



M. K. Burnett



L. Canada



D. Baxter



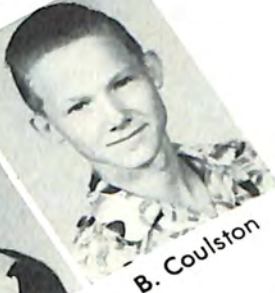
W. Bryan



B. Bryson



W. Bringle



B. Coulston



E. Bringle



B. Cole



R. Coley



J. Bramble



F. Clark



B. Clark



G. Davis



R. Cates



B. Davis



P. Carson



J. Crum



W. Culver



P. Cox



L. Dawson



J. Delk



G. Davis



*William Terry Durrell*



B. Deverell



E. DeVaughn

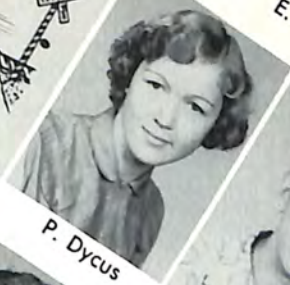


E. Eubanks



M. L. Farmer

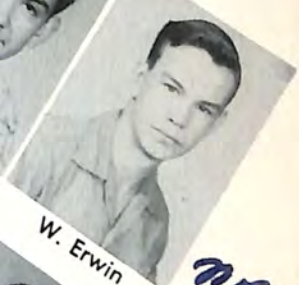
P. Durham



P. Dycus



J. Edens



W. Erwin



R. Fisher



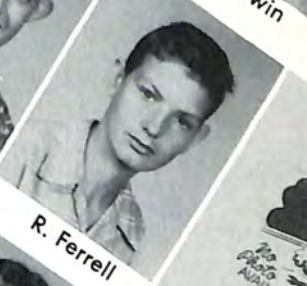
A. Faight



W. Faight



N. Faulk



R. Ferrell

*Norman Faulk*



J. Fleming



K. Fletcher



H. Finley



B. Gatlin



S. Gatlin



C. Fowler



M. N. Franklin



M. A. Fryer



A. Fuller



P. S. Green



R. George



J. Glover



M. Gracey



C. Gray



K. Gray



D. Hartman



B. Hadley



J. Hanks



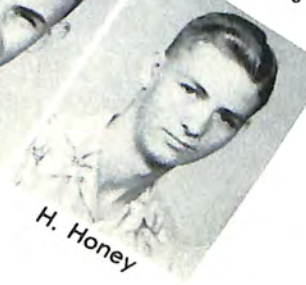
H. Harrington



P. Harris



B. Headin



H. Honey



*James*



J. Houston



J. Huggins



Y. Howard



L. Jones



H. Hudson



A. Jones



E. Hopkins



R. L. Johnson



G. Howles



M. Johnson



B. Lindsey



F. Johnson



M. Liles



N. Hyatt



C. Lewis



J. Lewis



W. Keltner



J. Mashburn



T. Kelley



S. Marshall



R. Karney



K. McKee



N. Maharrey



M. Max



K. McCool



L. McDivitt



N. Mashburn



K. Max



R. McCommon



M. Mashburn



P. Mix



J. Mashburn



S. Miles



R. Mills





I. Morris



M. N. Moore



J. Naifeh



C. Nolen



B. Overton



J. Owen



S. Owen



E. Parker



M. A. Parker



V. Pepper



C. Petty



M. Pinner



V. Pruitt



A. Ralph



C. Reynolds



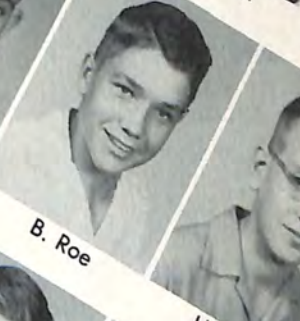
P. Rice



R. Richard



R. L. Roberts



B. Roe



H. Roe



J. Rogers



J. Rone



B. Ross



R. Ross



J. Ruffin



A. Rule



E. Sappington



B. Scroggins



J. Seay



J. Selph



L. Shahan



A. Shires



G. Sprayberry



D. Slover



J. Shoaf

To Jim from Jim

To cousin Jim Sterling Ruffin





T. Smith



E. Smith



L. Smith



B. Smith



B. Smith



N. Stafford



E. Stallings



M. Smith



P. Smith



P. Smith



V. Townsend



D. W. Travis



B. Tucker



G. Stiles



B. Stone



N. Thomas



J. Thornton



C. H. White



J. Whitehorn



W. Whitley



E. Turner



M. Turner



M. Walker



L. Watson



W. Wilson



B. Wood



A. Wooten



P. Williams



R. Williams



R. Williams



R. Wilson



B. L. Yelvington



J. Young



K. Young



E. L. Yarbro



R. Yarbro

*Lots of  
Lucas  
White*







# Honor



May Queen  
Valedictorian  
KATHERINE SHOAF



Salutatorian  
BETTY GATLIN



Girls' State  
DORIS DAWSON



Boys' State  
CARL TURNER



D.A.R. Award  
WANDA BEAVER

Compliments  
of  
BOZO'S  
Mason, Tennessee



# Students



Mr. Byars-Hall  
JERE HILL

Miss Byars-Hall  
ERNESTINE UNDERHILL



J. Robert Orton Award  
RANNY FARRELL



F.F.A. Scholarship  
PAUL CHUMLEY



American Legion Award  
MAZIE WARMATH      RAYMON BRYANT

SHOAF & HERSBERGER FURNITURE COMPANY, INC

West Liberty Avenue

HOME of FINE FURNITURE

Gibson Appliances — Armstrong Inlaid Linoleum

Call Us For Free Estimates

"Terms to Fit the Budget"





# Beta Club

In the fall of 1939, under the sponsorship of Mr. L. W. Tansil, sixteen honor students were organized into a group whose purpose was to petition Beta Club. This club was given a charter April 9, 1940. Sam Brown Lowenhaupt was president of this group.

Sponsor  
Mr. Rodney Hughes



Bill Vassey



Jo Rivers Baxter



Roy Parimore



Betty Gatlin



Ernestine Underhill



Robert L. Sorrell



Volerie Bush



Jere Hill

Congratulations to the Class of '54  
WALKER CHEVROLET COMPANY  
Chevrolet-Oldsmobile-Cadillac  
Cars — Trucks — Service  
"A Business Fair Dealing Built"

PHONE 9781



A student becomes eligible for Beta Club in his junior year. To be a member, a student must have a scholastic average of 90 or better on his freshman and sophomore work and must have at least a "B" average in department. A student may become a member of the Beta Club any time in his junior or senior year that his average for the combined period after his entrance in high school reaches 90.



President  
Bobby Butler



Kip Shoaf



Wilma Wylie



Mazie Warmath



Robert Fuller



Edith Claire Walker



Roby Roach



Richard Veazey



Betty Jo McClain

Compliments of  
HUGHES GROCERY COMPANY, INC.  
Fairy Flake and Beauty Bake Flour



Who's



**Most Popular**  
BILLY JACK STAFFORD    JERE HILL  
KIP SHOAF



**MAX WEIS  
Jewelry Co.**

Covington, Tennessee

**Featuring**

Towles "King Richard"

Towles "Candlelight"

Towles "Old Master"

Towles "Craftsman"



Who



**Friendliest**  
HUGH LEE WAITS    BOBBY BUTLER  
WANDA BEAVER

Best Wishes and Congratulations  
SENIOR CLASS of 1954  
MAYES HOWARD LUMBER CO.  
Covington — Mason — Millington — Henning



Who's



Most Athletic  
JOE GARDNER    MARGIE HADLEY



"Since 1910"

9778 Phone 9583

**S**HELTON  
ERVICE  
ATISFIES

SALES



SERVICE

SHELTON MOTOR COMPANY



Who



Most Courteous  
CHARLES STEPHENSON  
Most Stylish  
MARY JANE GREEN



MOORE BROS.  
Mobil Products — Phone 2454  
COMPLETE ONE STOP STATION  
Mobilgas  
Covington





*Who's*

**Most Handsome**

PALMER SMITH  
**Most Beautiful**

JUNE GASSON

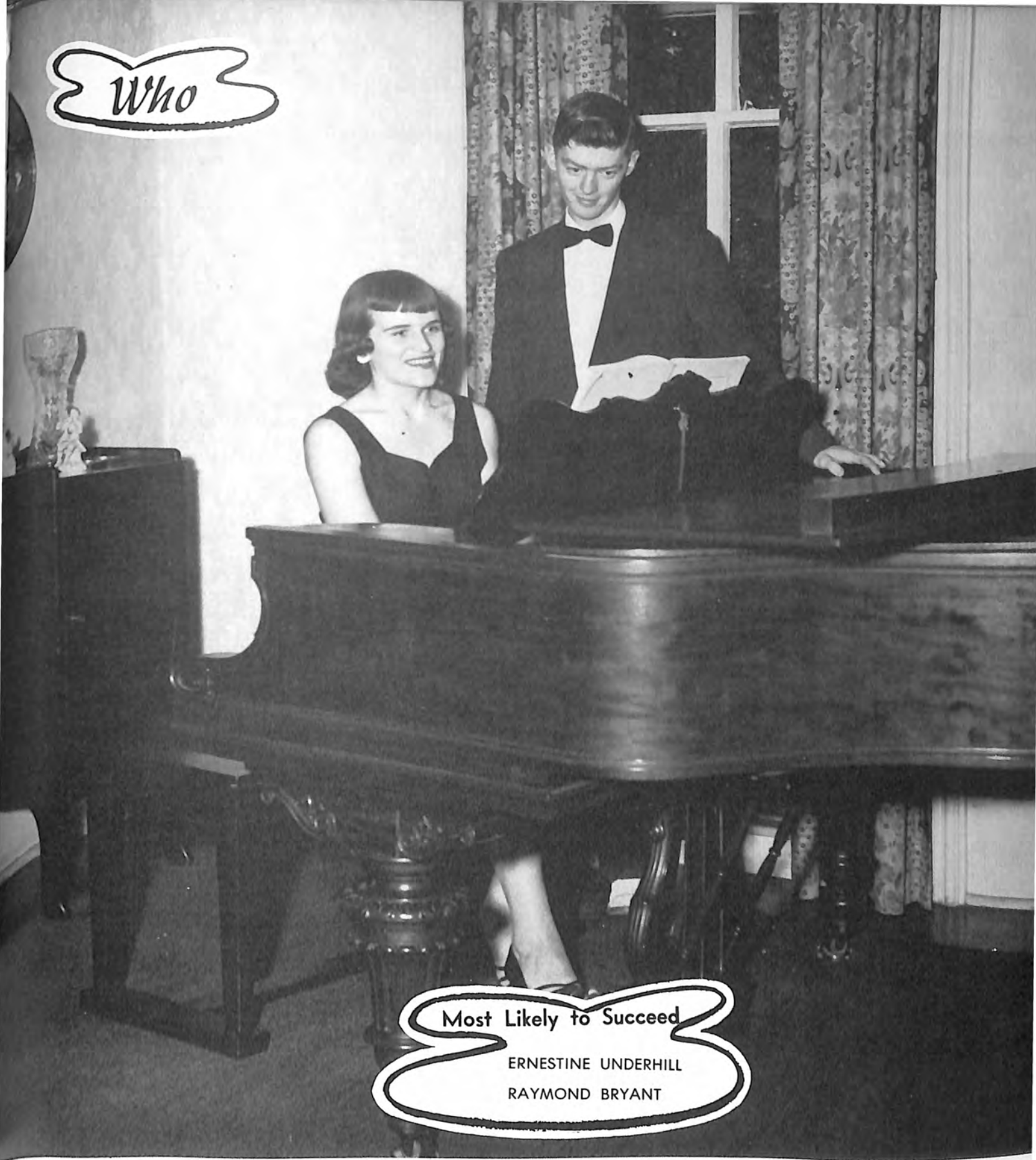
McDANIEL MOTOR CO.

Sales — Service

Complete Automobile Repairs



Who



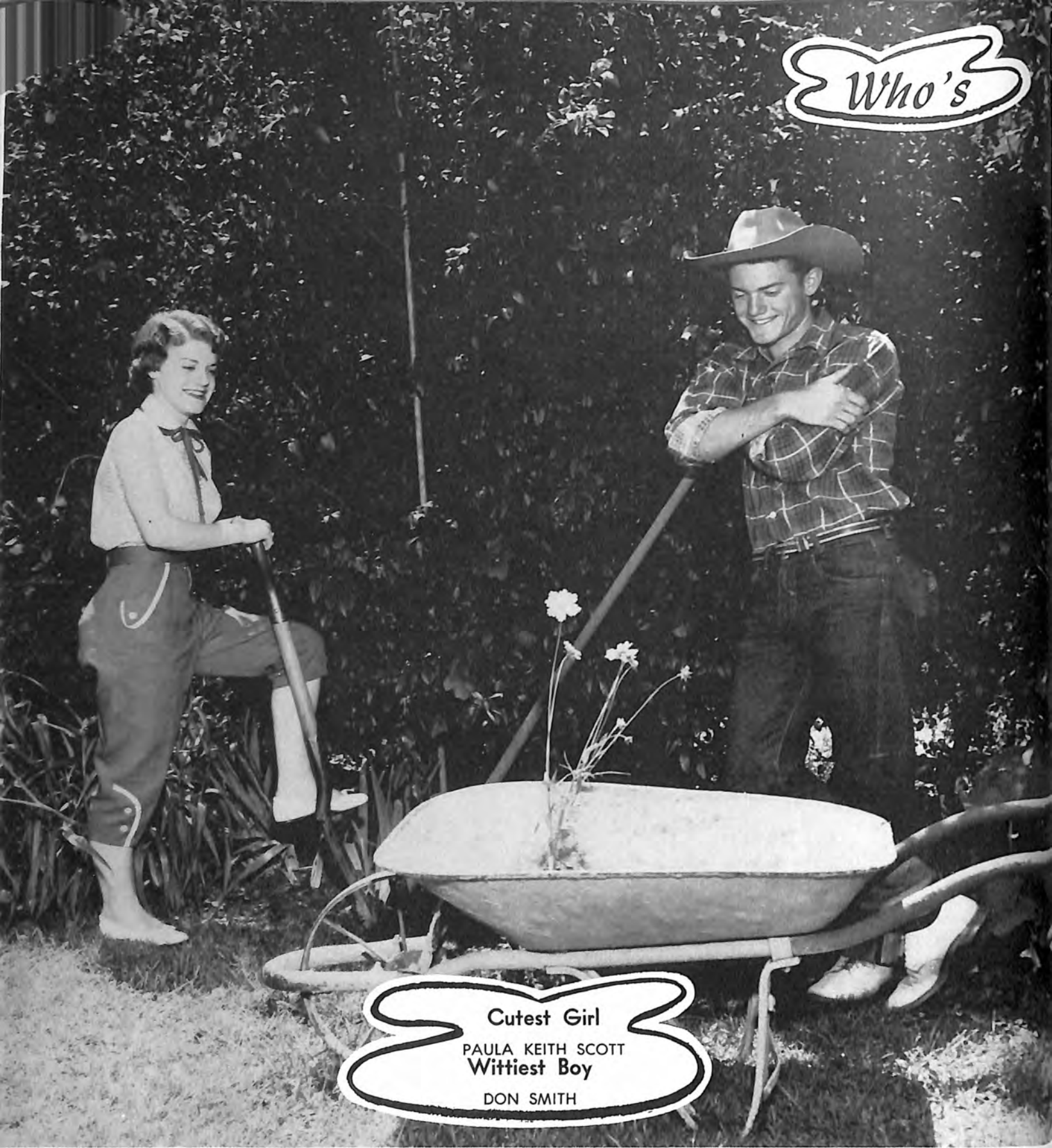
Most Likely to Succeed  
ERNESTINE UNDERHILL  
RAYMOND BRYANT



Your Ambition Should Be To Save As Well As To Get  
THIS BANK WILL HELP YOU SAVE  
Member F.D.I.C.



Who's



Cutest Girl  
PAULA KEITH SCOTT  
Wittiest Boy  
DON SMITH

COMPLIMENTS OF WEST  
TENNESSEE'S GREATEST STORE  
Covington, Tennessee  
PHONE 2664





Who



**Best All Around**  
WILMA WYLIE      ERNESTINE UNDERHILL  
JOE GARDNER

RACO DRIVE IN THEATRE  
and  
RUFFIN AND RITZ THEATRES  
of Covington, Tennessee  
Extend their heartiest congratulations to you  
RUFFIN AMUSEMENT CO., INC.  
Finest Theatres in West Tennessee and Kentucky





F  
H  
A

UPPERCLASSMEN

President, Kip Shoaf; Vice President, Betsy Harvey; Secretary, Barbara Flowers; Treasurer, Ann McDonald; Reporter, Mary K. Burnett; Parliamentarian, Wanda Beaver; Historian, Doris Dawson; Song Leader, Estella Wilson; Sponsor, Miss Frances Rast.

The Future Homemakers of America (F.H.A.) Club was organized June 11, 1945, under the direction of Miss Frances Rast. Sara Roper was the first president.

F  
H  
A

FRESHMEN





F  
 F  
 F

UPPERCLASSMEN



President, Carl Turner; Vice President, Morris Jobe; Secretary, Earl Faulk; Treasurer, Tom Downing; Reporter, Jimmy Sorrell; Sentinel, Floyd Fleming; Sponsors, Mr. John Neese and Mr. C. E. Johnson.

The Future Farmers of America organized their first unit at Byars-Hall in March, 1927, under the direction of Mr. C. E. Johnson. There were twenty-eight charter members. Gordon Williams was the first president.



F  
 F  
 F

FRESHMEN





Pres. Gardner    V. Pres. Hill    Sec.-Treas. P. Smith    Rep. T. Smith    Sgt.-at-Arms Utley    Anderson    Beasley    Butler



Craig    Cranford    Downing    Faulk    Flowers    Frizzell    Harris    Hastings



Hartley    We. Howard    Wi. Howard



Marshall    Robbins    Rogers    D. Smith



Sorrell    Stafford    Stephenson    Young



Sponsor Coach Judy

The "C" Club was organized in the school year 1946-47, under the leadership of Coach Hazel. There were twenty-four charter members with Jack Boyd as president.



D



M. Clowes



Sponsor  
Mr. Judy



Y. Clowes

E



Jimmy Edens



John Paul Farmer



Harold Mathis



Wayne Robbins



Edward Roberts



Thomas Smith



Everett Stafford



Jerry Thornton



Milton Thornton



Richard Utley



Stanley Wages



Raymond Weir

Congratulations to  
The Graduating Class of 1954  
GRACEY, BEASLEY & SAGE CO.  
"Your Family Shoe Store"  
PHONE 9827



# Latin



The Latin Club was organized by Mrs. Annie Irwin (now Mrs. Embry Bringle) in 1935. It was originally planned for freshmen only, but this was soon changed. Membership is now limited to upperclassman Latin students.

OFFICERS—President, Ernestine Underhill; Vice President, Wilma Wylie; Secretary, Estella Wilson; Treasurer, Beverly Bringle; Reporter, Kip Shoaf; Sponsor, Mrs. Parkinson.

## YOUNGER'S JEWELERS

Elgin-Longines

Bulova-Hamilton

Bluebird-Diamond

Gorham-Silver

GIFTS FOR EVERY OCCASION

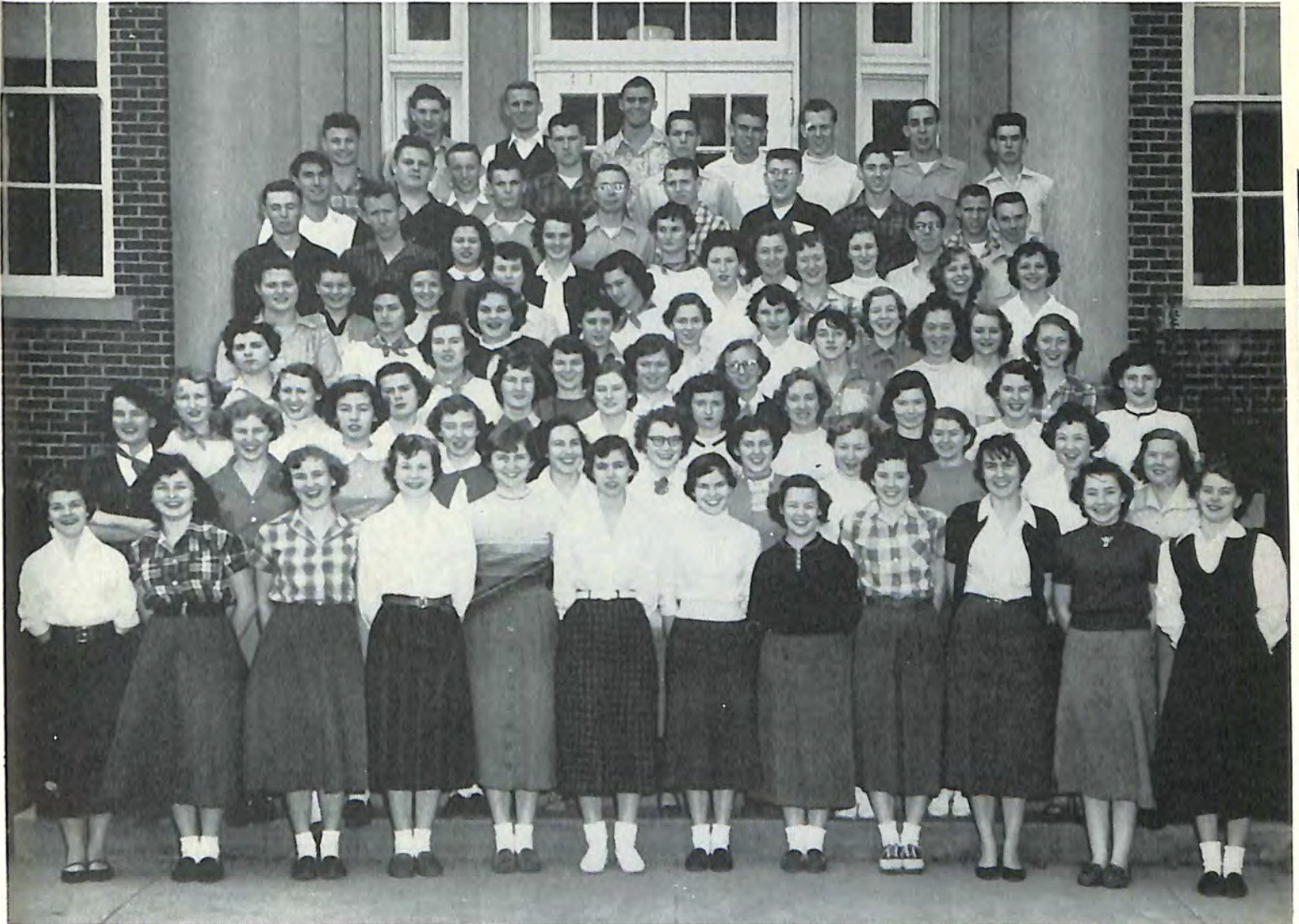
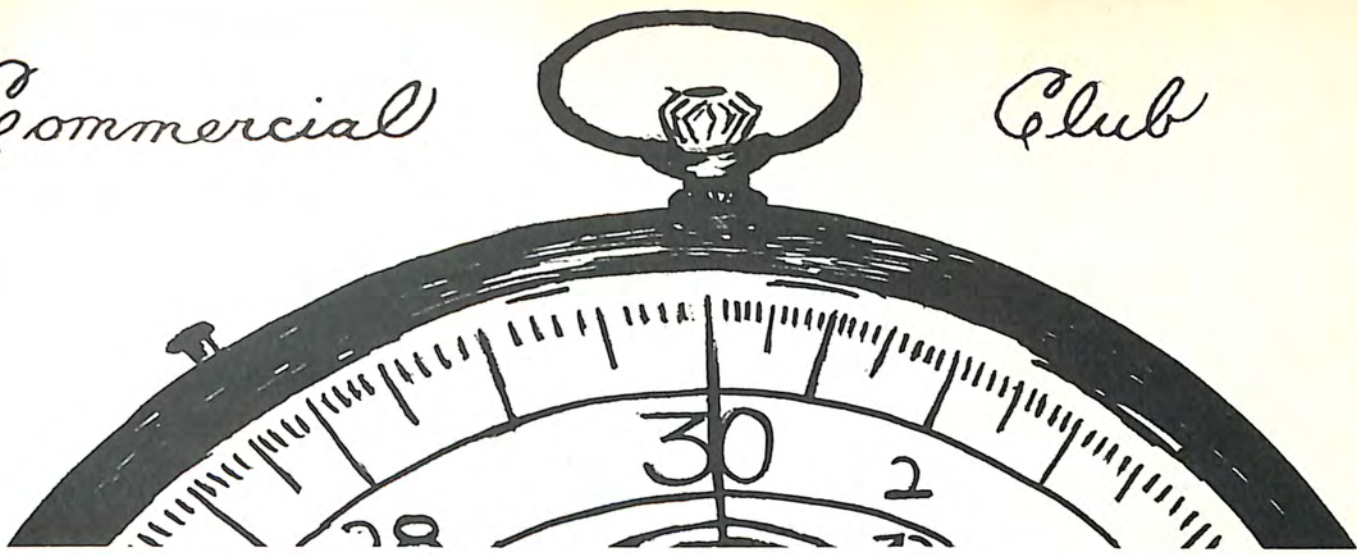
Covington

Ripley



Commercial

Club



OFFICERS—President, Kay Cothran; Vice President, June Gasson; Secretary, Betty Kelley; Treasurer, Betty Gatlin.

The Commercial Club was organized in 1947. Miss Elizabeth Beck was the sponsor and Rosemary Cothran was the first president. There were ten members.

COMPLIMENTS OF  
MARSHALL-McQUISTON COMPANY  
Phone 2481     Air-Conditioned  
Covington, Tennessee





BARBARA FLOWERS



PAULA SCOTT



STELLA WILSON



SANDRA JONES



Queen  
JUNE GASSON



MARSY BROWN

MR. HORACE COOLEY

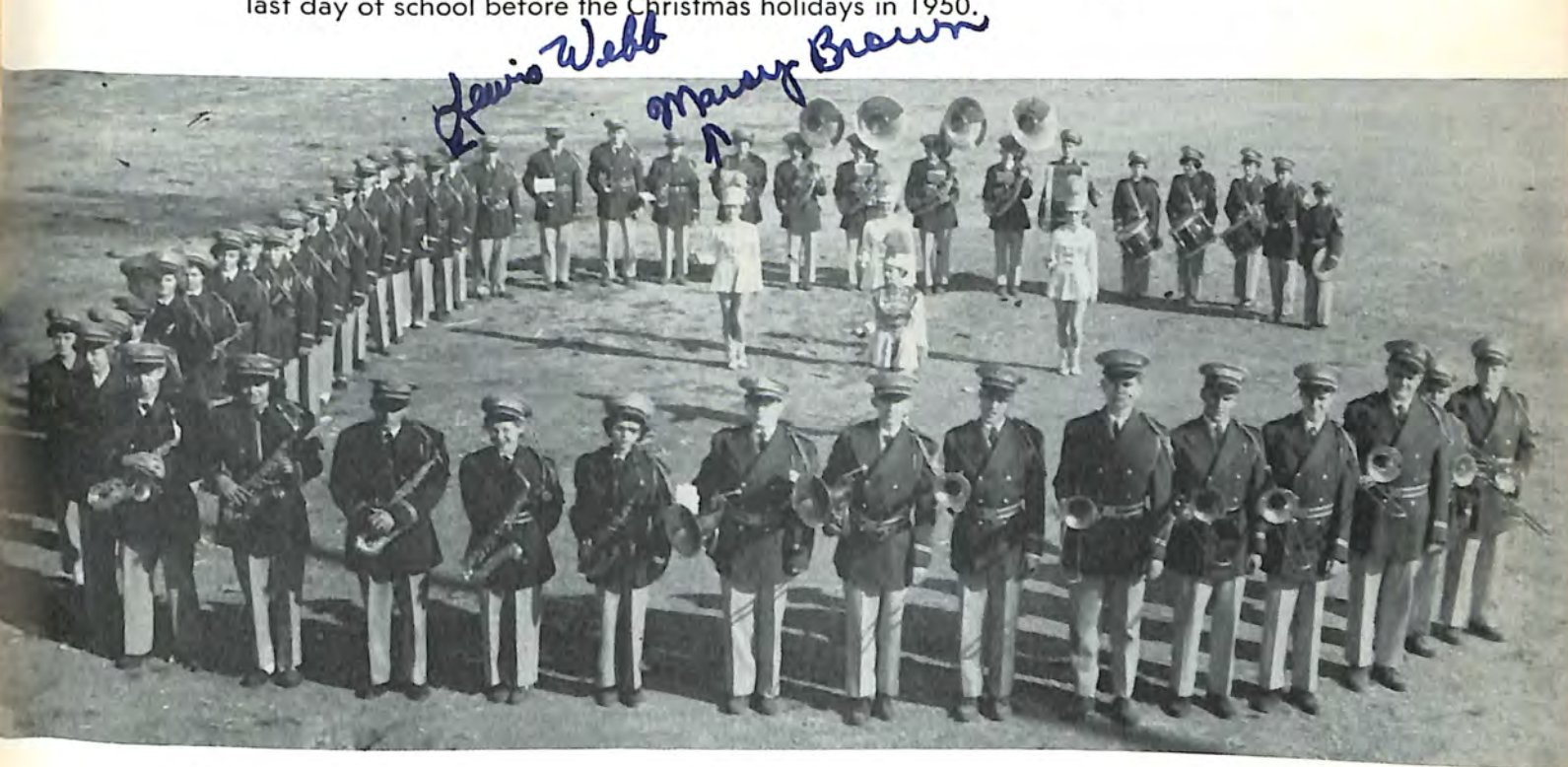


Band Director



# Byars-Hall Band

The Byars-Hall Band was organized in the fall of 1950 under the direction of Mr. Hugh H. Mathews. About sixty students were in the group. Students and parents alike first heard the new band at a Christmas assembly program on the last day of school before the Christmas holidays in 1950.



## GIRLS

Kim Baxter  
 Marsy Brown  
 Mary K. Burnett  
 Kay Cothran  
 Doris Dawson  
 Amy Deverell  
 Betty Deverell  
 June Dunn  
 Margaret Durham  
 Jean Fleming  
 Barbara Flowers  
 Virginia Fryer  
 June Gasson  
 Margie Hadley  
 Sandra Jones  
 Carolyn Max  
 Ann Rule  
 Virginia Roberts  
 Lee June Ruff

Paula K. Scott  
 Nancy Wages  
 Helen Whitehorn  
 Barbara Williams  
 Estella Wilson

## BOYS

Billy Adkerson  
 Jick Burk  
 Bobby Butler  
 David Combs  
 Larry Combs  
 John Cook  
 Wayne Culver  
 Richard Daniel  
 Larry Daugherty  
 William Earwood  
 Mack Easley  
 Jimmy Edens

Ranny Farrell  
 Billy Fleming  
 Walter Hayes  
 Billy Hazelrig  
 Billy Hise  
 Johnnie Howard  
 Kay Keltner  
 Barry Leach  
 Wayne Max  
 Jimmy McCall  
 Ronald Miller  
 Roy Parimore  
 R. H. Poole  
 James Rose  
 Eugene Scudder  
 Tim Sloan  
 Robert L. Sorrell  
 Richard Veazey  
 Lewis Webb



# Purple and Gold

---

The PURPLE AND GOLD was first published in 1922-23 under the sponsorship of Mrs. Ashley Downing and Mr. C. E. Wilson. Charles McClelland was the first editor; Annie Lowenhaupt was assistant editor. The subscription rate was ten cents per copy and fifty cents for the year. That rate remained unchanged until 1952-53.



Charles Stephenson  
Raymond Bryant  
Warner Richardson  
Jere Hill  
Miss Johnson  
Mrs. May

Wayne Hartley  
Betsy Harvey  
Paula Scott  
Wilma Wylie  
Laura Anne McGowan  
Drew McFarland

Diane Slover  
Robert Fuller  
Tommy Johnson  
Betty Gatlin  
Ann McDonald  
Mazie Warmath

Harry Bowden  
Monte Temple  
Kip Shoaf  
Barbara Flowers  
Jo Rivers Baxter  
Bob Hastings







Mrs. Shoaf

Wylie

Barton

J. Baxter

Title LIBRARY CLUB

Author Mrs. Shoaf

President - Wilma Wylie

Secretary - Treasurer Barton



K. Baxter

B. Bringle



M. Bringle

Cobb

Flowers

The first Library Club was organized by Mrs. L. D. Elliston in the fall of 1940. The original club had ten members.



Green

Gruggett

Harris

Hazelrig

Max

Shoaf



Springer

Thurmond

Turner

Underhill

Warmath

Wooten

W. H. WOOTEN

Distributor

PAN-AM petroleum products

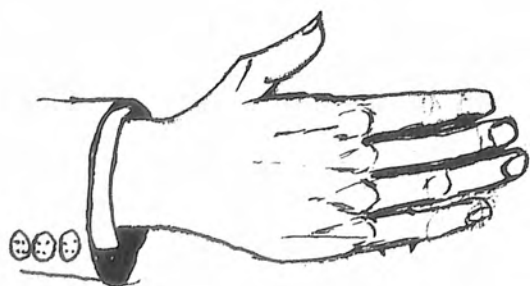
PAN-AM products fine as they come







Scenes from  
JUNIOR-SENIOR BANQUET  
and  
LATIN CLUB BANQUET



"Where you will enjoy  
doing business"  
UNION SAVINGS BANK  
A Friendly Bank





## 1954 May Day Program

Miss Byars-Hall, Ernestine Underhill; May Queen, Kip Shoaf; Mr. Byars-Hall, Jere Hill; Maid of Honor, Stella Wilson; Escort, Mr. R. K. Castellaw; Flower girls, Mary Lee Moore, Meredith Peeler, Nancy Wooten; Crown Bearer, Peter Fudge. COURT: Betty Jo McClain, Bill Harris; Barbara Barton, Wilbur Howard; Anna Vance Cobb, Johnny Howard; Janice Owen, Bobby Beaty; Gail Davis, Terry Smith; Kay Cothran, Dan Jennings;

Janie Daniels, Bill Young; Betty Deverell, Marvin Johnson. PAGES: Kay Pinner, Doris Dawson, Amy Deverell, Lynn Hartley. "CINDERELLA" CAST—Narrator, Laura Anne McGowan; Small Children, Margaret Neil Moore, Kim Baxter; Cinderella, Beverly Grugget; Ugly Sisters, Edith Claire Walker, Beverly Bringle; Mother, Margie Hadley; Prince, Monteene Bull; Director, Miss Jewell Sadler.

May Day became an all-out full-size program in 1947, under the direction of Miss Blanche Oakley. Every girl in high school is eligible to take part in this activity, which is under the auspices of the girls' physical education department.



BADDOUR'S DEPARTMENT STORE

"Family Outfitters Since 1905"

Phone 9823



CLASS TOURNAMENT WINNERS  
FOR 1954

Senior Boys

Coaches: Joe Gardner, Robert L. Sorrell.

Bottom row: Utley, Flowers, Waits, Farrell, Rice.

Top row: Smith, Stafford, Richardson, Gracey, Hill, Robbins.



The interclass tournaments started about 1945. Mr. Castellaw, then coach, was responsible for launching this source of much pleasure to the Byars-Hall students and faculty. The small fee charged is to defray the expenses of the Junior-Senior Banquet.



Senior Girls

Coaches: Carolyn Anderson, Janice Walk, Margie Hadley, not pictured.

Bottom row: Wilson, Yarbrough, Scott.

Middle row: Farmer, Hazelrig, Gasson, Howard, Beaver.

Bottom row: McDonald, Shoaf, Fleming, Gatlin, Underhill.





## *"A Case of Springtime"*

Bob Parker ..... Robert Sorrell  
 Betty Parker ..... Betty Kelley  
 Mr. Parker ..... Tom Downing  
 Mrs. Parker ..... Ernestine Underhill  
 Dickie Parker ..... G. K. Butler  
 Louella ..... Wander Beaver  
 Gwen Anderson ..... Paula Scott  
 Joan Abernacker ..... June Gasson  
 Eddie Abernacker ..... Charles Stephenson  
 Mr. Abernacker ..... Bill Vassey

Mrs. Brunswick ..... Laura Ann McGowan  
 Mrs. James ..... Kip Shoaf  
 Mrs. Hill ..... Georgia Howard  
 The Plainclothes Man ..... Charles Gracey  
 Miss Bright ..... Barbara Barton  
 Director ..... Mr. E. M. Evans  
 Prompter ..... Wilma Wylie  
 Program Chairman ..... Betty Gatlin  
 Publicity Manager ..... Raymond Bryant

"A Case of Springtime" was presented by the senior class of Byars-Hall at the Covington Grammar School Auditorium on May 6-7, 1954. A portion of the money that is cleared on these annual plays is used to defray the expenses of the graduation exercises for the class. The rest is left to the school in a designated gift.

Compliments of  
 BIG STAR SUPER MARKET  
 JOE TRENTHAM—Manager



# *Years of Progress*



In 1910, the city of Covington, at an approximate investment of \$20,000, erected and equipped the building pictured above as a high school. Under an agreement between the City Board of Education and the County High School Board, who were to be responsible for the maintenance of the building, it was available for use of both city and county students.



In 1916, a 5 acre field near the school was purchased by citizens of the town, and, at an approximate expenditure of \$7,000, the field was enclosed with a high fence, a grandstand was erected, and a baseball diamond, a quarter mile running track, and a gymnasium were constructed.



About 1920, six rooms were added to the rear of the original high school building. In 1932-33 further additions, which included the beautiful facade, six new classrooms, a large cafeteria, and a spacious area for library use, were constructed on the east.

In 1929-30, the Vocational Building, housing facilities for a gymnasium and agricultural, commer-



cial, and home economics classes, was erected. Later, equipment for a woodshop was put in. In 1951-52, the gymnasium facilities were modernized and enlarged and the building is now used only for physical education, shop and band.

In the fall of 1952, a completely modern science building, on the west side of the campus, was ready for use. Up-to-date equipment for laboratory work in science, home economics, commercial work, and agriculture classes is provided here.

In the spring of 1954, the Athletic Field Board in cooperation with broadminded and generous citizens decided to make needed improvements. The inadequate lighting, put up in 1936, has been replaced for both baseball and football fields, a 2,000 capacity grandstand is being erected, and movable steel bleachers have been purchased. These improvements, approximate cost \$27,000, pave the way for more recreational activities at the athletic field.











Captain  
BUDDY ROGERS 3



BOBBY BUTLER 3



JOE GARDNER 3



JERE HILL 3

Football was first organized in Byars-Hall in 1921 under the direction of Coach Wilson.



TOM DOWNING 2



Homecoming Queen  
SARA WHITEHORN



Football Queen  
BARBARA BARTON



JIMMY CRAIG 2

*Danny Cranford*



DON SMITH 1



DANNY CRANFORD 1



WELTON HOWARD 1



WILBUR HOWARD 1





BILLY J. STAFFORD 3



RICHARD UTLEY 3



EARL FAULK 3



Co-Captain  
THOMAS SMITH 2

The first game, which was played against Ripley, was in 1922.



PALMER SMITH 2



COACH GULLEY



COACH JUDY



KAYMOORE FRIZZELL 2

To a fellow guard  
Good Luck  
Jack Marshall  
Bob Hastings  
to a fellow who's  
going places  
from  
Sally



JACK MARSHALL 1



BOB HASTINGS 1



BILL YOUNG 1



Managers  
CHARLES STEPHENSON 2  
BILL HARRIS 2





J. D. HALL



DAN JENNINGS



BILLY TRANTHAM



Managers  
GEORGE FLOWERS 1  
MONTY TEMPLE



GAYLON BEASLEY

1953 SCHEDULE

We	They
6	Millington ----- 7
6	Dyersburg ----- 25
13	Ripley ----- 19
34	Munford ----- 19
13	Trenton ----- 14
46	Martin ----- 13
27	<i>HALLS</i> ----- 7
7	Somerville ----- 0
33	Humboldt ----- 13
20	Brownsville ----- 0
178	Total ----- 110
205	
	117



RICHARD FISHER



JOE MASSEY



J. T. CRAIG



NAT NEWMAN

*Nat Newman*



JACK SANFORD



JOHN SHOAF



STANLEY TAYLOR



MARSHALL WALK





## *Cheerleaders*

W. Forbess, K. Shoaf, E. Underhill, E. C. Walker, S. Whitehorn, W. Beaver, B. Harvey.

## *Junior Varsity*

Third row: Coach Scruggs, R. Craig, F. Fisher, T. Morris, J. Rogers, W. Bryan, B. Headin, R. Roberts, J. Seay, W. Smith, N. Faulk, D. Forbess, Coach Fudge.

Second row: H. Roe, Manager; F. Johnson, M. Johnson, S. Ruffin, R. Yarbo, B. Davis, G. Noell, T. Smith, M. Smith, D. Slover, K. McCool, B. Deverell, J. Whitehorn, Manager.

First row: W. Whitley, B. Newman, K. Gray, R. Coley, B. Coulston, A. Ralph, R. Sanford, B. Baxter, J. Naifeh, E. Stallings, W. Bringle.







Co-Captain  
JOE GARDNER 3  
Center



Co-Captain  
WAYNE HARTLEY 2  
Guard



MILTON THORNTON 2  
Forward

SCHEDULE

B.H.H.S.	Opponents
57	Alamo .....50
65	Bolton .....67
48	Somerville .....35
53	Ripley .....36
56	Brownsville .....38
65	Brighton .....40
45	Bolton .....79
43	Munford .....30
42	Dyersburg .....44
77	Ripley .....51
66	Halls .....59
65	Brownsville .....36
53	Selmer .....51
56	Somerville .....46
59	Brighton .....44
62	Halls .....60
52	Selmer .....48
58	Munford .....48
71	Dyersburg .....57
62	Trenton .....65

DISTRICT  
TOURNAMENT

60	Brownsville .....41
46	Somerville .....33
57	Brighton .....59

REGIONAL  
TOURNAMENT

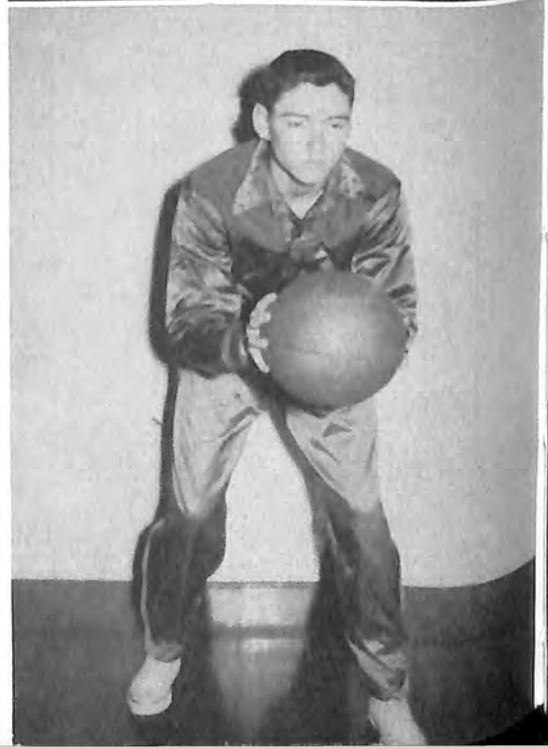
32	Henderson .....40
----	-------------------



PALMER SMITH 2  
Forward



ROBERT SORRELL  
Guard



KAYMOORE FRIZZELL 2  
Guard





WILBUR HOWARD  
Guard



WELTON HOWARD  
Forward



BILL YOUNG  
Forward



**HISTORY**  
The boys' basketball team played their first competitive games in 1913. The games were played on an outside cinder court. The first coach was R. M. Lester.



PUNKIN ANDERSON  
Guard



GAYLON BEASLEY  
Forward

COACH JUDY





COACH JUDY



Co-Captain  
MARGIE HADLEY 3  
Guard



MARY JANET TURNER 3  
Forward



JANICE WALK 2  
Forward



BILLIE OVERTON 2  
Guard



DORIS JOBE 3  
Forward



SARA WHITEHORN 2  
Forward

SCHEDULE

BHHS	Opponents
46	Holy Names ..... 52
39	Sacred Heart ..... 34
42	Alamo ..... 28
56	Holy Names ..... 24
34	Somerville ..... 41
39	Ripley ..... 49
45	Brownsville ..... 41
47	Brighton ..... 19
35	Alumni ..... 33
33	Munford ..... 38
48	Dyersburg ..... 21
39	Ripley ..... 45
40	Halls ..... 41





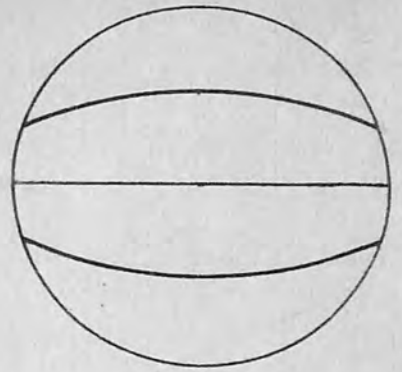
EDITH C. WALKER 1  
Guard



NANCY WAGES 1  
Forward



LYNN HARTLEY 3  
Guard



JANICE BURGESS 2  
Guard



BETTY JO McCLAIN 1  
Guard



CAROLYN ANDERSON 2  
Forward

SCHEDULE

BHHS	Opponents	
33	Brownsville .....	25
39	Selmer .....	28
39	Somerville .....	50
52	Brighton .....	31
30	Halls .....	37
47	Selmer .....	25
49	Munford .....	38
38	Dyersburg .....	32

DISTRICT  
TOURNAMENT

42	Munford .....	34
56	Brownsville .....	26
41	Halls .....	55
48	Ripley .....	50

*Out of Luck  
to a real nice +  
good-looking fellow -  
Carolyn  
Anderson  
P.S. you play foot  
ball like the  
and you'd be  
O.K.*





ROBBINS 4  
Pitcher, First Base



UTLEY 3  
Shortstop



SMITH 3  
Catcher, Outfielder



HILL 4  
Pitcher, First Base



HASTINGS 1  
Outfielder

RUNNERS-UP  
WEST TENNESSEE  
and  
STATE OF TENNESSEE



YOUNG 2  
Outfielder



SANFORD 1  
Outfielder



COACH GULLEY



CRAIG 2  
Manager

Baseball was added as an interscholastic sport in the spring of 1949 under the leadership of Coach Gulley. The school is justly proud of the record of progress of this sport, for it has moved from a point of almost total inexperience to runners-up in West Tennessee and runners-up in the State in a period of only a few years. This 1954 team has placed two trophies in the trophy case, the first of their kind in the history of Byars-Hall.





STAFFORD 4  
Outfielder, Catcher



WAITS 1  
Outfielder



BEASLEY 2  
Second Base



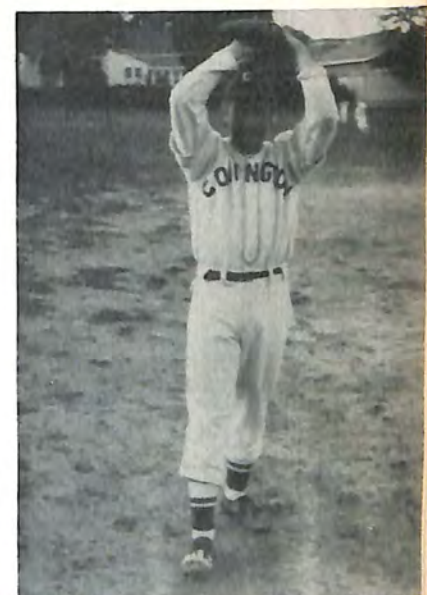
ANDERSON 2  
Third Base



FAULK 1  
Outfielder

*Walter Whitley*

B.H.H.S.	SCHEDULE	Opponents
10	Munford .....	5
0	Millington .....	4
3	Ripley .....	1
10	Brighton .....	0
3	Millington .....	1
16	Brighton .....	4
6	Ripley .....	0
6	Ripley .....	0
17	Munford .....	0
DISTRICT TOURNAMENT		
8	Alamo .....	5
WEST TENNESSEE PLAY-OFF		
10	Bolton .....	4
5	South Side .....	6
STATE PLAY-OFF		
7	Tullahoma .....	3
2	South Side .....	3



ATKINS 1  
Pitcher, Outfielder

*David Slover*



WHITLEY  
Utility Infielder



BRADSHAW  
Infielder

*Bobby Bradshaw*



SLOVER  
Utility Infielder  
Pitcher

CRESCENT BEAUTY SHOP  
For Appointment Call 9879

Phonograph Records  
COLEMAN APPLIANCE CO.

Phone 9669

Compliments of  
SMITH BROS. SERVICE STATION  
PAN-AM

Phone 9587



We, the Senior Class of 1953-1954, want to express our deepest appreciation to Mr. Castellaw, to Mr. Simonton, and to the faculty, present and past, for their untiring efforts in preparing us for the future years.

We want to thank Mrs. Parr, our sponsor, for her help and guidance through our senior year. We also want to thank our sponsors of the past years; Mr. Evans who directed the production of our play; and our deepest appreciation goes to Mrs. Bringle for her work on the annual.

We wish the underclassmen the best of luck in their future days at Byars-Hall. In order to facilitate the progress of certain, more or less needy, undergrads the seniors bequeath the following:

- Bobby Beaty wills his hairy chest to Punkin Anderson.
- Harry Bowden leaves his "evil eye" to Roy Parimore.
- Barbara Barton's bandbox appearance goes to Margie Hadley.
- Raymond Bryant leaves his attendance record to Dorothy Parker.
- G. K. Butler bequeaths his luck in matching pennies to Jimmy Bradshaw.
- Frances Hazelrig leaves her giggles to Jo Rivers Baxter.
- Bobby Butler wants to leave his good looks and modesty to Terry Smith.
- L. W. Byrd wills his "cool character" to Kay Keltner.
- Martha Clowes leaves her secret formula for good milkshakes to Louis Daniels.
- Billy Chumley's freckles go to Margaret Ann Gracey.
- Paul Chumley's rugged determination is left to Bob Yoakum.
- Elizabeth Farmer wills her naturally red hair to Gail Smith.
- David Combs wills his bass fiddle to Mr. Cooley.
- Tom Downing bequeaths his way with women to Bob Hastings.
- Betty Fleming leaves her quiet ways to Betty Clark—please put them to good use, Betty.
- Jimmy Edens leaves his million dollar dental display to Patricia Harris.
- John Paul Farmer leaves his "springy" walk to Sidney Turner.
- Betty Gatlin's slim figure is left to Edith Claire Walker.
- Ranny Farrell wills his noisy shoe taps to Miss Boyd.
- Billy Fleming bequeaths the remaining lessons in Arthur Murray's dancing course to "Wildman" Faulk.
- Georgia Howard leaves a free course on "How To Get Your Man" to Carolyn Anderson.
- George Flowers leaves his pigs to Betty Foust.
- Joe Gardner is willing to leave anything—except Betsy.
- Betty Kelley's coquettish ways are for Wanda Bringle.
- Charles Gracey leaves his height to the flag pole in front of the building.
- Robert Grant leaves his "big wheel" in the agriculture department to Carl Turner.
- Ann McDonald leaves her "easy does it" spirit to Monteen Bull.
- Wayne Hartley's speed goes to Rogers Fisher.
- Jere Hill can leave Miss Sadler's fourth period phys-ed class.
- Myrna McIntosh's petite figure goes to Bobby Bowles.
- Barry Leach bequeaths his complete record collection from Coleman Appliance to Gail Davis of Davis Appliance.
- Harold Mathis leaves his midnight shift at the Dairy Castle to Haskin Davis.

E. F. ROGERS

Where You Like What You Get  
and Get What You Like  
MASON, TENNESSEE

SPOTLESS CLEANERS

We appreciate your patronage  
PHONE 9543



Dorothy Scroggins' neat and orderly habits to Betsy Harvey.

Kip Shoaf wills her grey skirt to anyone who wants it.

Neil Rice's position as No. 1 truck driver of Byars-Hall goes to Marvin Johnson.

Wayne Ralph leaves all of his girl friends to the senior class next year.

Mary Nell Thomas passes her sweet disposition on to Barbara Flowers.

Ernestine Underhill wills her bangs to Mr. Simon-ton.

Wayne Robbins bequeaths his "Favorite" chair in Mrs. Parr's English Class to Kay Moore Frizzell.

Edward Roberts wills his deep voice to Gaylon Beasley.

Mazie Warmath's brains go to Peggy Durham.

Estella Wilson leaves her ears to study hall teachers.

Buddy Rogers wills his leg muscles to Monte Temple.

Jack Simonton leaves Covington for Texas.

Wilma Wylie's yearning for a college man goes to Martha Sue Bringle.

Annette Yarbro's bag of tricks are left to Theta Kelley.

Don Smith leaves his collection of road maps to Mr. Hughes.

Warner Richardson wills his size 13 class ring to Bobby Stiles.

Wanda Beaver leaves her right arm to freshman girls for waving purposes.

Palmer Smith transplants his dimples to Marsy Brown.

Robert Selph's love for chewing gum goes to Bill Harris.

Volrie Bush wills her typing ability to Robert Fuller.

Thomas Smith wills his yellow pants to Billy Hise.

Robert Sorrell wills his self-confidence to Jack Marshall.

Kay Cothran leaves all the cozy corners to Carolyn Carter.

Everett Stafford's "friendly discussions" with Miss Boyd are willed to the file. No one is capable of inheriting them.

Nadine Finley keeps her "A" record in speech making in the family by leaving it to Bobby Stone.

Billy Stafford wills his crewcut, sideburns, and mustache combination to David Slover.

Charles Stephenson leaves his good intentions to Johnny Howard.

Wayne Stiles leaves his choir directing ability to Diane Slover.

June Gasson bequeaths her various crowns and titles to all the female portion of Byars-Hall.

Jerry Thornton wills his G.I. haircut to Johnny Crum.

Milton Thornton wills his "Globetrotting" basket-ball ability to Wilbur Howard.

Mary Jane Green's sophistication goes to Wilda Forbess.

Richard Utley's touchdowns go to the 1954 foot-ball team.

Stanley Wage's worried look is willed to Eddie Stallings.

Mildred Hudson's long hair goes to Joyce Bramble.

Hugh Lee Waits leaves his feminine appeal to Tobey Poole.

Raymond Weir's RENAULT goes to Drew McFarland.

Bessie Marie McDaniel's loud mouth goes to Margaret Neal Moore.

Julian Williamson wills his position on F.F.A. Parliamentary Team to E. P. Martin.

Dean Huskey leaves his class ring to Sandra Jones.

Laura Anne McGowan leaves her apple-polishing to all the underclassmen.

Jordan Sherrod very willingly leaves.

Bill Vassey leaves William Shakespeare to Mrs. Parr.

Paula Scott leaves her drum major boots and her corn plasters to any poor soul who enjoys marching.

WITNESSED BY

HARRY BOWDEN      WAYNE ROBBINS  
BARBARA BARTON

Compliments of  
STEPHENSON FURNITURE COMPANY  
Covington, Tennessee  
PHONE 9517

Drugs  
ROPER'S  
Prescriptions

"Where Most People Trade Most"



Read These Ads and You'll Know Who  
Supplies Your Needs and the Annual's, Too

Compliments of  
NOELL IMPLEMENT CO.

TAYLOR MOTOR SERVICE  
Any Work on Any Car

Always Welcome at  
McCORMICK DRUG STORE  
Prescription Druggist  
Phone 9525, We Deliver  
Lentheric and Yardley Agency

ONEY J. NAIFEH  
Everything Good to Eat  
Phones 9731 and 9732

Compliments of  
SANFORD AUTO  
SUPPLY

Compliments of  
ELIZABETH'S  
Covington's only exclusive  
dress shop

Compliments of  
FEDERAL COMPRESS  
Covington, Tennessee

Compliments of  
C. T. POINDEXTER  
Philco Dealer — Mason, Tenn.

CHARLES G. MOSLEY  
GROCERY  
FRESH MEAT      HARDWARE  
Mason, Tennessee

Old Strong Bank  
TIPTON COUNTY FARMERS  
UNION BANK  
Covington, Tennessee

Compliments of  
WALKER HARDWARE  
FURNITURE CO.  
Phone 9591

B. L. OVERALL & SONS  
Shell Oils—Pontiac Cars  
GMC Trucks—Allis-Chalmers  
Tractors and Implements

Compliments of  
COVINGTON SUPER MARKET

MALEY FUNERAL HOME  
To Serve Humanity Better  
Covington, Tennessee

Compliments of  
SAMPLE SHOE STORE  
Bill Jennings

Compliments of  
COBB ELECTRICAL SERVICE  
You phone for us  
We'll wire for you



<p>Compliments of  <b>LOWENHAUPT-HILL HARDWARE CO.</b>          Since 1897          Covington, Tenn.          Admiral Television and Appliances</p>	<p><b>WESTERFIELD'S          CASH GROCERY</b></p>
<p>Compliments of  <b>JIM TAYLOR'S STORE</b>          Mason, Tennessee</p>	<p><b>DAVIS APPLIANCE CO.</b>          Authorized Dealer Crosley          We Service Everything We Sell          "The Crosley Boys"          Hwy. 51 South Covington, Tenn.  <b>LESTER DAVIS—KELLY DAVIS</b></p>
<p>Stop by  <b>DAIRY CASTLE</b>          After School</p>	<p><b>EAT AT          COURTESY CAFE</b></p>
<p>Compliments of  <b>JACK GUTTMAN</b>          North Side Square</p>	<p><b>ATKINS FARM SUPPLY</b>          H. L. Atkins          GROCERIES—PURINA FOODS          SEED—FERTILIZER</p>
<p><b>TAYLOR DRUG CO.</b>          Prescription Druggists          Mason, Tenn.</p>	<p>Compliments of  <b>SERVICE CENTER</b>          FARMALL TRACTORS          INTERNATIONAL TRUCKS          Phone 2631 Covington, Tenn.          June Wooten</p>
<p>Compliments of  <b>EBER'S DEPARTMENT STORE</b></p>	<p>Eat at  <b>CITY CAFE</b>          Phone 9864</p>
<p>Joe Thornton's  <b>ESSO SERVICE CENTER</b>          Personalized Service          Phone 9122</p>	<p>Meet Me at  <b>COVINGTON DRUG</b>          After School</p>
<p><b>JAMIESON          INSURANCE AGENCY</b>          Telephone 651</p>	<p>Phone 2484  <b>SMITH HARDWARE</b>          Hotpoint Dupont          Appliances Paints          RCA Victor Television</p>
<p>Compliments of  <b>J. T. CRAIG &amp; CO. LOCKER PLANT</b>          Manager  <b>WILLIAM E. WHITEHORN, JR.</b></p>	<p>Fresh Produce and Meat  <b>HARVEY AND WHITE</b>          "We're on the Square"</p>



- 19-23—Christmas Holidays
- 17-18—Mid-term exams
- 10—Football banquet
- 4—Football boys elect Barton queen

- 27—Annual Youth Banquet at Methodist Church
- 26—Out for Thanksgiving
- 25—Senior class sees "Macbeth" at Ripley
- 13—Final football game
- 12—First basketball game
- 6—Homecoming parade, and game . . . Red Smith makes touchdown
- 3—Purple and Gold presents "Four for the Dough"
- 2—Gatlin, Faught, Whitehorn, Owen elected Homecoming candidates

- 29—Band Carnival
- 27—Senior party
- 25—Annual staff skit
- 27-28—First payment
- 14-15—Senior picture
- 13—Beta initiation
- 9—Teachers' meeting—school holiday
- 8—Jere Hill makes touchdown
- 7—First issue of Purple and Gold . . . FHA, FFA initiation party

- 25—Senior rings arrive
- 11—First football game
- 4—Beaver, Shoaf, Underhill, Walker, Harvey, Whitehorn, Forbess elected cheerleaders.
- 2—Senior, junior, soph class officers elected

- 24—1953 Annuals delivered . . . Football boys welcome rest of students back to school

- 4—Back at school . . . Mr. Simonton wears new tie
- 11—Snow Holiday
- 13—FHA, FFA Party . . . Johnson, Rogers, Red Smith, Butler, Fleming place at Golden Gloves
- 14—Selected students participate in PTA panel
- 22—Snow again—no school!
- 26—Measure seniors for caps and gowns
- 28—Betas present "Our Town"

- 16—P. Smith gets senior ring
- 17—M. Brown gets P. Smith's ring
- 16—Girls' basketball tournament at Munford — place fourth
- 23-24—Little red school houses represent second annual payment.
- 24—Boys' tournament at Brownsville—second place

- 1—Boys' B.B. team goes to Regional
- 11—Play try-out
- 15—Cast announced
- 16—Latin Club presents 2 skits
- 18-20—FHA Convention
- 20—May court elected
- 25—Seniors order invitations
- 26—Library Club Talent Show. Dexter wins

- 1—Purple and Gold comes out Pink and Green. . . Basketball banquet
- 12—1954-55 P&G Staff announced . . . May Queen, Mr. and Miss BHHS elected
- 13—Latin Club banquet
- 15-17—FFA Convention
- 14-16—Annual Staff presents seniors
- 16—"C" Club hayride
- 22—Junior-Senior Banquet
- 23-25—Beta Convention
- 30—May Day program

- 1—Mrs. Parr's coke party for Senior girls
- 3—Juniors measure for rings
- 4—Paula entertains for play cast . . . Butler learns to jitter-bug
- 6-7—Seniors present "Case of Springtime"
- 12-13—Final exams for seniors
- 14-17—Underclassmen exams
- 16—Baccalaureate
- 18—Graduation
- 20—Julian Williamson gives barbecue to seniors
- 21—Senior picnic
- 23—Annual staff, Purple and Gold Staff picnic . . . Miss Johnson flashes beautiful new diamond

JUNE

- 4—Final copy of annual goes to press



Dear Jimmy,

Gosh, it certainly seems funny coming back for a visit, but it really is grand seeing every body again. I haven't forgot about writing to you when I go to school so you'll probably be getting a letter from me any day now.

Good luck always & happiness too.  
Love,  
Mauby



